

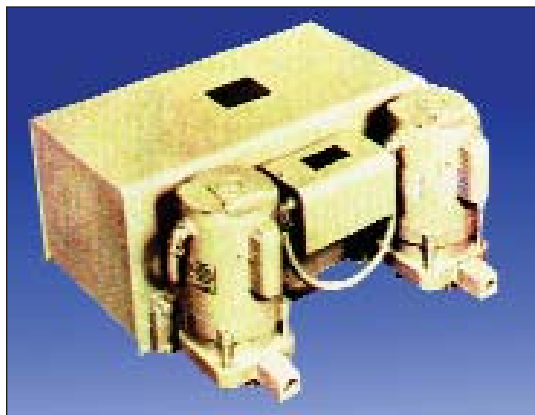
HOFFMAN ITT
FLUID HANDLING DIVISION

CENTRIFUGAL TYPE
WATCHMAN CONDENSATE PUMPS

For systems up to 12,000 sq. ft. E.D.R.

Cast iron receivers, bronze fitted centrifugal pumps with stainless steel shafts, one piece bronze impellers, heavy duty float switch and 1/3 HP, 115/230V, 1 ph.(only), 3450 RPM motors with thermal overload protection. 2" Inlet, 3/4" Discharge.

DUPLEX PUMP



WCD-12-20B (15 G.P.M. @ 20PSI)
 Duplex Unit W 14 Gal. Receiver Mechanical Alternator
 Shipping Wt: 270 lbs. [VNS#...HS004](#)

WCSD-12-20B (same as above
 but furnished with a steel receiver)
 Shipping Wt: 190 lbs. [VNS#...HSZ1220](#)

No. 180001
 Pump & Motor Assembly
[VNS# HS054...](#)

No. DA0393 Float Switch
[VNS# APH001...](#)

No. 180013 Seal Kit
[VNS#HS055...](#)

SINGLE PUMP



WC8-20B (12 G.P.M.)
 Single Pump Unit w/ 9 gal. Receiver
 Shipping Wt: 170 lbs. [VNS#...HS002](#)

WCS8-20B (same as above
 but furnished with a steel receiver)
 Shipping Wt: 130 lbs. [VNS#...HSZ820B](#)



DUPLEX UNIT

Model 4128-GD 22.5 GPM @ 20psi
 Duplex Unit 15 gallon steel receiver
 8,000 sq. ft. EDR 1/3 HP-3500 RPM-115/230 volt
 Mechanical Alternator
 Shipping Weight: 185 lbs. [VNS# SI011...](#)

Model 41215-GD 22.5 GPM @ 20psi
 Duplex Unit 30 gallon steel receiver
 15,000 sq. ft. EDR 1/2 HP-3500 RPM-115/230 volt
 Mechanical Alternator
 Shipping Weight: 235 lbs. [VNS# SI012...](#)



CONDENSATE PUMPS

with Heavy Gauge Steel Receivers

ALWAYS IN STOCK

Compact, neat appearance, simplicity, and efficiency describe the Sterlco line of condensate pumps. The 4100 series condensate pumps are designed expressly for condensate return in low pressure heating systems. These units can deliver their full rated power for long periods without damage or overheating. The efficient operating characteristics of the centrifugal impellers assure the motor will never be seriously overloaded even though pumping against a minimum discharge pressure. Float switches are easily adjustable for conversion of large units down to smaller ratings.

Float Switch APH001.....
 Seal SZ0810003400.....
 Body Gasket SZ25450000100.....



SIMPLEX UNIT

Model 4128-G 12 GPM @ 20psi
 Simplex Unit 15 gallon steel receiver
 8,000 sq. ft. EDR 1/3 HP-3500 RPM-115/230 volt
 Mechanical Alternator
 Shipping Weight: 120 lbs. [VNS# SI001...](#)

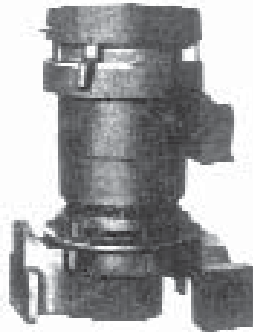
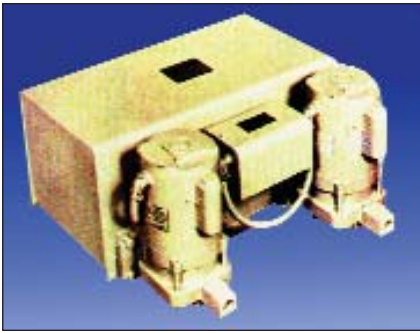
Model 41215-G 22.5 GPM @ 20psi
 Simplex Unit 30 gallon steel receiver
 15,000 sq. ft. EDR 1/2 HP-3500 RPM-115/230 volt
 Mechanical Alternator
 Shipping Weight: 200 lbs. [VNS# SI002...](#)



**CONDENSATE PUMPS,
 GENERAL PURPOSE PUMPS AND
 REPLACEMENT PARTS**

PRICED ON APPLICATION

HOFFMAN

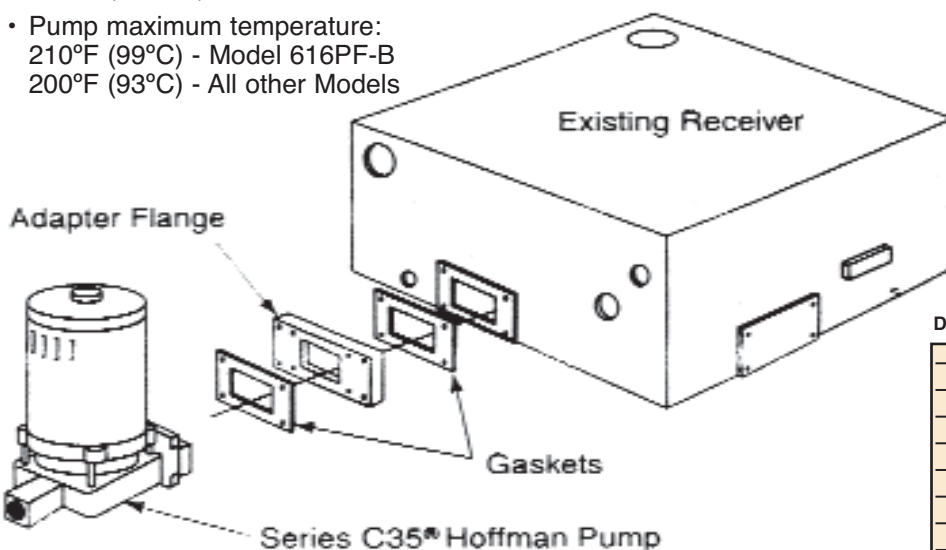


Pumps (Stock)

Centriflo® Series C35® Centrifugal Pumps

Hoffman Centriflo® Series C35 Centrifugal Pumps are designed for use on condensate and boiler feed units. They can also be used with our Adapter Flange Kit to replace pumps on other manufacturer's condensate units.

- Vertical mounting design conserves floor space and protects motor
- Low NPSH required-only 2' (610mm) NPSH for Model 616PF-B
- Precision balanced bronze impeller for vibration free operation
- Bronze case wear rings protects casing from wear
- Water slinger protects motor from water
- Heavy duty ball bearing 3500 RPM motor
- Maximum discharge pressure 40 psi (276 kPa)*
- Maximum capacity 30 GPM (6840 LPS)*
- Pump seal maximum temperature 250°F (121 °C)
- Pump maximum temperature: 210°F (99°C) - Model 616PF-B
200°F (93°C) - All other Models



Dimensions, in. (mm)

Pump Model	A	B	C
609PF	9 1/16 (230)	- (-)	- (-)
616PF	4 3/4 (121)	5 1/4 (133)	6 (152)
617PF†	4 3/4 (121)	9 1/16 (230)	6 (152)
616PF-B	9 1/16 (230)	- (-)	- (-)

† Includes orifice mounted on pump discharge

Ordering Information

Model Number	Part Number	Pressure Psig (kPa)	Capacity GPM (LPS)	Motor	Impeller Diameter In. (mm)	VIP Part #
609PF	180001*	20 (138)	18 (1.1)	1/3 HP 1 PHASE, 60HZ 115/230 VOLT	3 11/16 (93)	HS054
609PF	180025	20 (138)	18 (1.1)	1/3 HP 3 PHASE, 60HZ 208-230/460 VOLT	3 11/16 (93)	CALL
616PF	180029	20 (138)	30 (1.9)	1/2 HP 1 PHASE, 60HZ 115/230 VOLT	3 3/16 (81)	CALL
616PF	180026	30 (207)	17 (1.1)	3/4 HP 3 PHASE, 60HZ 208-230/460 VOLT	4 3/8 (86)	CALL
616PF	180027	30 (207)	30 (1.9)	1 HP 1 PHASE, 60HZ 115/230 VOLT	4 7/16 (113)	CALL
617PF	180028	40 (276)	17 (1.1)	1 HP 3 PHASE, 60HZ 208-230/460 VOLT	4 7/8 (124)	CALL
616PF-B (NPSH Pump)	2' 180030	30 (207)	30 (1.9)	1 HP 3 PHASE, 60HZ 208-230/460 VOLT	4 1/4 (102)	CALL

*Always in stock Item

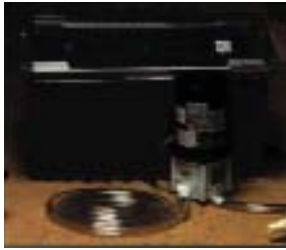
Pump Adapter Flange Kit (Stock)

Our adapter flange kits enable you to install a Hoffman Centriflo® Series C35® Pump as a direct replacement on other manufacturer's condensate units.

- Kit includes adapter flange, gaskets, and bolts
- Drilled and tapped adapter flange makes installation easy

Dimensions, in. (mm)

Part #	Manufacturer	X	Y
180035	Aurora	6 1/4 (159)	3 1/4 (83)
180037	Economy	4 1/4 (113)	4 (102)
180036	Federal	6 1/4 (159)	3 1/2 (89)
180032	Mepco	3 1/4 (83)	3 1/4 (83)
180034	Skidmore	4 1/4 (113)	4 1/4 (108)
180031	Sterling	3 3/4 (95)	3 3/4 (95)
180033	Weinman	4 1/4 (113)	4 1/4 (108)



GKPK-SC

The Coil Cleaning Kit consists of a 5 gallon polyethylene tank with cover and baffle. A little Giant 2-MD-SC magnet-driven pump with mounting bracket. 18" length of 1/2" I.D. Tygon tubing. 10' length of 1/2" I.D. vinyl tubing, filter material and 5 clamps.

562660

The Little Giant Coil Cleaning Kit is a fast, inexpensive, effective method for "boiling out" coils. Perfect for steam converters, burnouts, shell and tube heat exchangers, water heaters, and oil supply lines to fuel oil heaters. Used with coil cleaning acids



Double Viton Seal Acid Pump

Nylon front with 3/8" female NPT intake. Adapter included for 1/2" O.D. intake. 1/4" male NPT discharge. Stainless steel shaft and back plate. 6', 3-conductor cord with 3 prong molded plug. **U.L. Listed.**

502303

2E-NDVR 115V.

Ft. of Head	1'	3'	5'	7'
G.P.H.	250	217	180	145

PLEASE NOTE:

The 2E-NDVR Pump will operate only with flooded suction line. Pump must be below liquid level.

Big John Automatic Sump Pumps



- Submersible cast iron housing.
- Diaphragm operating switch.
- Non-clog pumping head.
- Screened intake.
- 6-CIA & 8 CIA2 — 1 1/2" discharge.
- 10-CIA & 12 CBA — 1 1/2" discharge.
- ***12 CBA cast bronze housing and bronze screened intake.

Specifications

Model No.	HP	Gallons Per Hour				Shut Off (ft)	PSI	Wt. Lbs.
		5'	10'	15'	20'			
6-CIA	3/10	2750	1750	750	—	18	7.8	18 1/2
8-CIA	4/10	3250	2500	1550	450	22.9	9.9	19
10-CIA	1/2	4200	3800	2700	1825	23	10	38
***12-CBA	1/2	5000	4000	3000	2000	26	11.3	38 1/2

Water Wizard



505000

- **Lightweight**
 - **Compact**
 - **A True Little Giant**
- The new Little Giant Water Wizard, **Model No. 5-MSP** is completely portable and easy to use. Just attach a garden hose or 1" pipe, set the pump into water at least 3/4" deep, and plug into a grounded 120 volt AC outlet. The Water Wizard will remove water to within 1/8" of floor. Equipped with 8 ft cord with 3-prong grounded plug. Maximum pumping height 26.3 ft. Thermally protected . H. 7 3/4" x W. 5 1/8" x L 6 1/8". GARDEN HOSE ADAPTER FREE. **5-MSP-25** Same as above but furnished with 25' cord.

Gallons Per Minute (GPM)

	1'	5'	10'	15'	20'
505000					
505025	20.4	19	16	13	8

Model NK-1 (210 GPH) Designed for use in mild acids, alkalis, hard water applications, and where copper/fluid are in contact. Has glass-filled, corrosion-resistant nylon housing. Thermally protected. **526003 NK-1**

Model NK-2 (325 GPH) Same as above, with larger motor. **527003**

Little Giant®

Non-Submersible Magnet-Driven Chemical Pump



Polypropylene pumping head, 1/2" female NPT intake, 1/2" male NPT discharge. Overload protector, 6', 3-conductor cord with 3 prong plug. Fan cooled motor— sleeve bearings. Titanium shaft standard. ***N.S.F. Approved 580002**

U.L. Component Recognized

2-MD 115 V.

Ft. of Head	1'	3'	6'	9'
G.P.H.	420	400	340	250



Polypropylene pumping head, 1/2" female NPT intake, 1/2" male NPT discharge. Overload protector, 6', 3-conductor cord with 3 prong plug. Fan cooled motor— ball bearings. Standard with Titanium shaft and thrust washers, and with Buna-N O-Ring. ***N.S.F. Approved 581002**

U.L. Component Recognized

3-MD 115 V.

Ft. of Head	1'	3'	6'	9'	16'
G.P.H.	420	400	340	250	125

Drainosaur Water Removal System Model WRS-6



Removes water from laundry trays, sinks, etc. where gravity drainage is impractical.

Includes 5-gallon polypropylene tank. Tank lid has 1/2" FNPT side intake port, 1/4" FNPT top discharge port, and 2" FNPT top vent port. Easy-to-remove filter trap.

Also includes .3 HP automatic, submersible sump pump with 8' power cord and 3 prong grounded plug; 1/2" MNPT to 1/4" FNPT adapter; and 1 1/4" pipe from pump to lid.

506055 115 V.

Performance (GPH @ Head)

Model No.	HP	AMP/Watt	Gallons Per Hour				Shut Off (Ft.)	PSI	Shut Wght. (Lbs.)	Dimensions (H x L x W) (In.)
			5'	10'	15'	20'				
WRS-6	.3	9/720	2750	1750	750	18	7.8	23	16 x 14 1/2 (D)	

Sewage/Effluent Pumps



The all new Eliminator submersible pumps from Little Giant are specifically engineered to handle the tough demanding tasks of effluent and sewage waste transfer with high efficiency and long term dependability.

The Eliminators — USA Series — include pumps for use in residential, commercial, industrial and agricultural applications with light to medium transfer demands. For dewatering, effluent waste, waste-water and sewage handling

where such materials must be moved upward from a collection area to sewer or septic lines, or drainage areas, the Eliminators are an ideal solution.

Performance (GPM @ Head)

Model No.	HP	Gallons Per Minute				Weight (Lbs.)
		5'	10'	15'	20'	
8E-CIA-RFS	1/3	52	45	33	—	29
9E-CIA-RFS	4/10	57	53	40	30	33
9S-CIA-RFS	4/10	80	57	24	—	36

Pulsafeeder Chemical Metering Pumps

CHEMICAL METERING PUMPS

For Heavy-Duty Industrial Processing and Water Treatment Applications.

- Cooling Tower Treatment
- Metal Finishing-brighteners
- Boiler Feed-scale Control
- Processing Systems
- Industrial Water Treatment
- Chlorination-acid Feed
- Swimming Pool Treatment
- Detergent Feed-rinse Aid
- Feed to Irrigation Systems
- Livestock Feed Additives

PULSAtron electronic metering pumps feature a 100:1 turndown ratio dual adjustment for versatile metering over a wide range of flow rates and pressures. Constant flow over rated pressure, guided ball check valve system, leak free sealless liquid ends and enclosure make the PULSAtron an excellent option for a wide range of applications. Choose between the full featured Seies E Plus or the economical Series A Plus.

PULSAtron
Electronic Metering Pumps
Series E Plus



Excellent for Boiler Chemical Feed

Series E PLUS Key Features

- 4-20mADC Direct and Stop inputs or External Pacing and Stop inputs are available.
- Auto-Off-Manual switch
- Highly reliable digital timing circuit
- EMI protection
- Thermally protected solenoid with fd auto reset
- Panel mounted circuit breaker
- Indicator lights
- Bleed valve assembly
- 115V AC/50-60 Hz (1Ph.)
- U.L. Approved for Outdoor Applications

Model No.	Pressure PSI. Max	Capacity GPH	Max GPD
LPB2SA-PTC1		0.20	5
LPD3SA-PTC1		0.45	11
LPF4SA-PTC1	250	0.83	20
LPH4SA-PTC1		1.66	40
LPA2SA-PTC1		0.25	6
LPB3SA-PTC1		0.50	12
LPD4SA-PTC1	150	0.87	21
LPG4SA-PTC1		1.75	42
LPH5SA-PTC1		3.12	75
LPA3SA-PTC1		0.50	12
LPB4SA-PTC1		0.91	22
LPF4SA-PTC1	100	1.83	44
LPG5SA-PTC1		3.33	80
LPH6SA-PTC1		5.0	120
LPH7SA-PTC1	35	10.0	240

KOPkits®

Keep-ON-Pumping kits that can save you time and money.

When you need a part, you've got it! A KOPkit can help you cut downtime and put you back in business fast. Use KOPkits also for preventive maintenance, to ensure continuous high performance from your Pulsafeeder metering pump.

Save money too, by buying parts in KOPkits instead of ordering individual parts.

KOPkits are available for the CHEM-TECH Series 100 and Series 200, MEC-O-MATIC Dolphin Series, and all PULSAtron metering pumps.



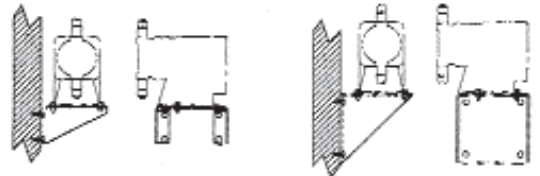
WALL MOUNTING BRACKET

The rugged stainless steel and plastic Pulsafeeder wall mounting brackets provide easy, secure installation of the metering pump in a variety of environments. The bracket is engineered to accept most PULSAtron® metering pumps and all models of the CHEM-TECH Series 100.

TYPICAL INSTALLATION of WALL BRACKET

Stainless Steel

Plastic



NOTE: It is the manufacturer's recommendation that the bracket be used for wall mount applications. Contact the factory concerning other mounting considerations. It is also recommended that suction lift be kept to a minimum and should be a consideration in choosing shelf mount location.

TSF System

7 1/2 gallon polypropylene container mounted on a solid base equipped with Barracuda Series Feeder

Model	Ship Wt. #
W/SR-105	27
W/SR-110	27
W/SR-125	29
W/SR-175	29

Voltage: 120-V, 60 HZ
Dimensions: H-13 5/8; W-22 1/8; D-14 5/8



Myer



VNS# **MY001**
Model MCSP
55 GPM 18 ft. hd.
115/60/1750 RPM
Overload Protected
1 1/4" Discharge Outlet

**SUMP PUMP
CHECK VALVE ONLY**

1 1/4"
1 1/2"
2"

Little Giant®

High Temperature Effluent Pumps



HT-6E-CIA-FS Automatic
506600 15' power cord.

1/3 HP. Handles liquid with solids up to 1/2" spherical. Integral float switch for automatic on/off. "On" level is 11"-14"; "off" level is 3"-6".

VNS# **LG700**.....

APPLICATIONS

- Boiler blowdown pits
- Plant washdown pits
- Public utility underground
- Transformer vaults
- Industrial steam cleaning pits

FEATURES

- Handles liquid up to 200°F
- Cast Iron Pump housing and volutes
- Nylon vortex impeller and base
- 1 1/2" FNPT discharge

