



Switches

No. 2



Low Water Cut-off and Alarm Switch

Used to add low water cut-loff to McDonnell feeders; No. 47, 51 and 247. Can be purchased mounted on the feeder; No. 47-2, 51-2, 247-2, or purchased separately and added later. It has a line voltage cut-off and alarm. Underwriters listed. For manual reset, order No. 2-M. Shipping weight 2 lbs.

No. 2 MM-2 No. 2-M MM-2-M

No. 5



Low Water Cut-off and Alarm Switch

Used to add low water cut-loff to McDonnell feeders; No. 93, 94 and 193 and 194. Can be purchased separately and added later. It has a line voltage cut-off and alarm. Underwriters listed. For manual reset, order No. 5-M. Shipping weight 2 lbs.

No. 5 MM-5 No. 5-M MM-5-M

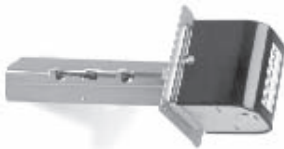
Air Flow Switches

No.AF1 - Designed for medium and higher air velocity system applications.

No.AF2 and AF3 - Designed for low air velocity applications.

McD/Order # MM-AF1 MM-AF2 MM-AF3

Offers a dependable way to make or break an electrical circuit when flow in an air duct starts or stops. Senses air flow, or flow failure by responding only to velocity of air movement. Broad range of applications includes air conditioning systems, exhaust or make-up air systems, equipment or processes requiring air cooling or heating. Underwriters listed. Switch sensitivity easily adjusted. Fits ducts 6" and larger. For temperature to 300°F. (No. AF3, 275°F.) Shipping weight 2 1/2 lbs.



No. FS4-3

For heavier duty service or for use with process liquids. Available in standard, vapor-proof construction. Wetted parts of brass or stainless steel. Maximum pressure 300 p.s.i. with brass wetted parts, 1000p.s.i. with stainless steel. Maximum temperature all models 300°F.



McD/Order # MM-FS7-4 Brass MM-FS7-4-S Stainless Steel

McDonnell Liquid Flow Switches

No. FS4-3

MM-FS4-3

McDonnell Flow Switches offer a dependable way to make or break electrical circuit when flow in a pipeline starts or stops. Some of their basic uses: to actuate signal devices; control motors; start or stop burners; sound alarm; control metering devices. All models Underwriters Listed; equipped with SPDT switches; easily adjustable for sensitivity to flow.

Compact, moderately priced flow switch for service on water lines principally. Wetted parts brass and monel. Segmented paddle for 1" to 3" pipe, extended paddle included for larger pipe. Has 1" NPT connection, installs in tee or welding neck in-line. For pressures to 150 psi, temperatures to 300°F. Shipping weight, 3lbs.



No. FS1 and FS6 Series

Actuated by low flow rates, yet allows large flow-through capacity. Particularly suited for water purification and water supply booster systems, cooling systems for bearings, electronic tubes, and compressors. Brass wetted parts. NPT threaded inlet and outlet, installs right in line. For pressures to 100 p.s.i.; temperatures to 225°F.



FS1 FS6

Table with columns: Mc Donnell/ Order #, Tapped for Pipe Size, Shipping Weight. Rows: MM-FS1 (1/2", 3-1/4 lbs.), MM-FS6-3/4 (3/4", 5 lbs.), MM-FS-1 (1", 5 lbs.)



Provides vapor-proof construction in economically priced, compact size flow switch for out-of-doors and high humidity locations. Wetted parts of brass and Monel. Maximum pressure 150 p.s.i.; maximum temperature 225°F.