

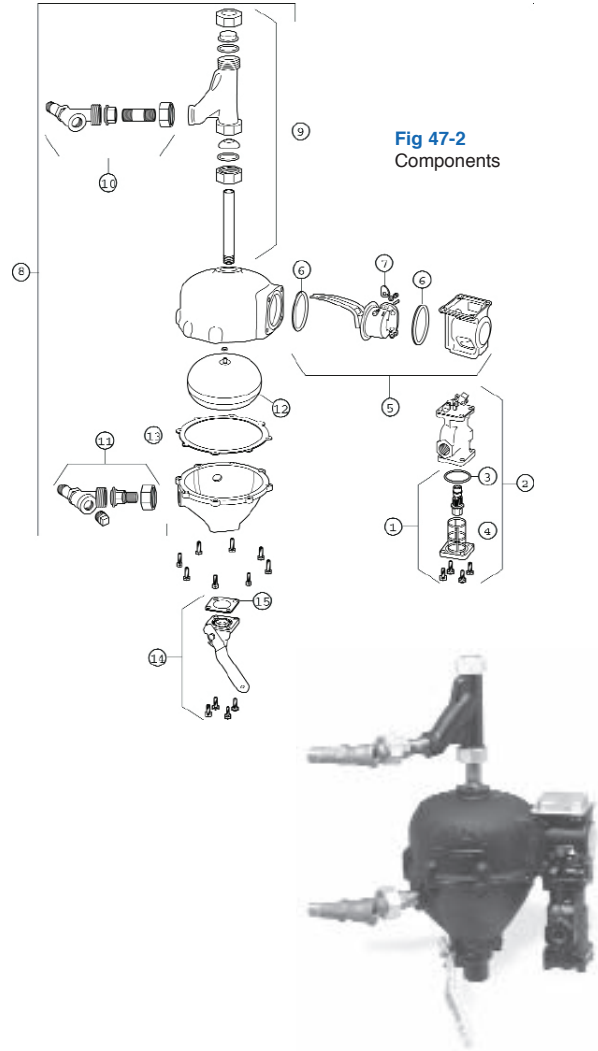


**SERIES 47 - Mechanical Water Feeders**

- No. 47 . . . . . VNS# **MM-47**
- No. 47-2 w/ Cut-off Switch . . VNS# **MM-47-2**

- For steam and hot water boiler with cold water feed.
- Continuous maintenance of minimum safe water level, independent of electrical service.
- Proportional feed action.
- Quick hook-up fittings provided.
- Quick-change replaceable cartridge valve and strainer.
- Optional Features: 1.) No. 2 Switch 2.) Manual Reset
- Maximum water supply pressure, 150psi.
- Maximum boiler pressure, 25psi.

Item #	Model/Order#	Description
1	MM-CTRD-101	Cartridge & Strainer
2	MM-SA47-101-102	Valve, Cartridge & Strainer Kit
3	MM-37-101	Tetraseal O-Ring
4	MM-SA101-38	Strainer
5	MM-SA47-4	Bellows Bracket Assembly
6	MM-37-27	Gasket
7	MM-CO-106	Cam Assembly
8	MM-MA-259	Quick Hook-up Fittings (Includes 9,10,11)
9	MM-SA159-17	Black "Y" Assembly
10	MM-SA259-24	Upper Quick Hook-up Fittings
11	MM-SA159-24	Lower Quick Hook-up Fittings
12	MM-SA37-30	Float Includes #13 Gasket
13	MM-37-26	Gasket
14	MM-14-B	Blow Down Valve
15	MM-37-39	Blow Down Gasket
-	MM-2	Switch for 47-2
-	MM-2-M	Switch for 47-2 with Manual Reset

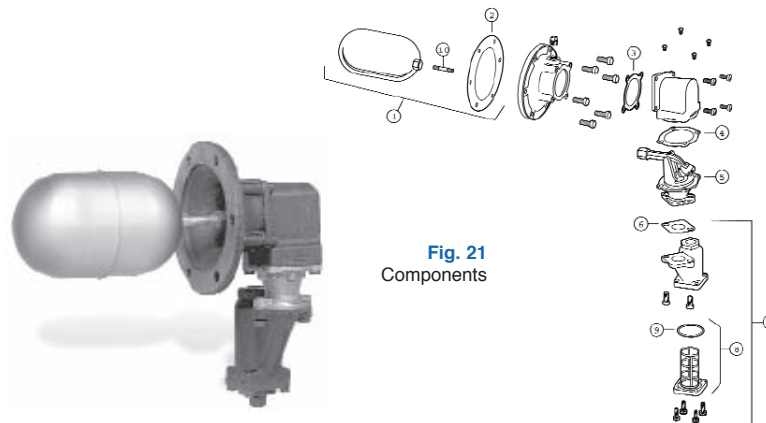


**SERIES 21 - Make-Up Water Feeders**

- No. 21 . . . . VNS# **MM-21**
- No. 221 . . . . VNS# **MM-221**

- For boiler receiver tanks.
- Direct mounting eliminates need for equalizing connections.
- Proportional feed action.
- Mounting flange - six 7/16" bolt holes on a 5 3/4" bolt circle.
- Soft seat provides positive seal.
- Maximum water supply pressure, 150psi.
- Maximum pressure, 35 psi.

Item #	Model/Order #	Description
1	MM-21-30	Float
2	MM-847-26	Gasket
3	MM-21-27	Gasket
4	MM-21-12	Gasket
5	MM-SA21-6	Valve Assembly
6	MM-37-28	Gasket
7	MM-SA51-9R	Strainer Assembly
8	MM-SA21-38R	Strainer Basket
9	MM-37-101	Tetraseal O-ring
2A	MM-F-26	Head Gasket #221



## SERIES 51

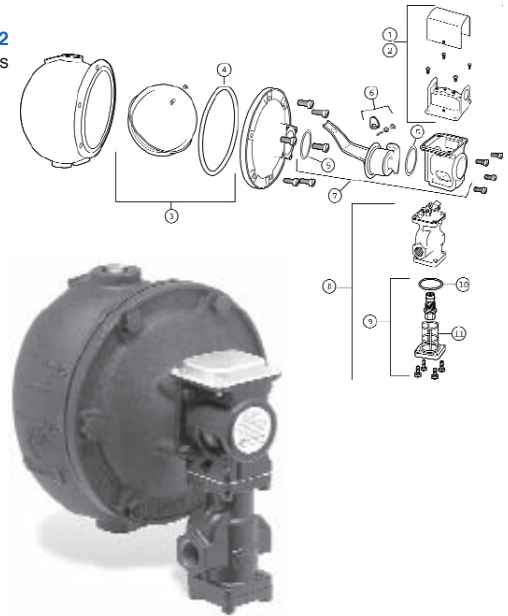
### Water Feeders/Low Water Cut Offs

No. 51 . . . . VNS# **MM-51**  
 No. 51-2 . . . VNS# **MM-51-2**

- For low pressure steam and hot water boilers larger than 5,000 sq. ft. capacity with cold water feed.
- No. 2 cut-off switch included.
- Optional Features 1.) Manual Reset 2.) Float Block
- Maximum water supply pressure, 150psi.
- Maximum pressure, 35psi.

Item #	Model/Order #	Description
1	<b>MM-2</b>	Low Water Cut-off Switch
2	<b>MM-2M</b>	No. 2 w/ Manual Reset
3	<b>MM-FLT-51</b>	Float
4	<b>MM-F-26</b>	Gasket
5	<b>MM-37-27</b>	Gasket
6	<b>MM-CO-106</b>	Cam Assembly
7	<b>MM-BA-51</b>	Bellows Bracket Assembly
8	<b>MM-SA51-101-102</b>	Valve & Strainer Kit
9	<b>MM-CTRD-51</b>	Cartridge & Strainer Kit
10	<b>MM-37-101</b>	Tetreseal O-Ring
11	<b>MM-SA101-38</b>	Strainer Basket (includes item 10)

**Fig. 51-2**  
Components



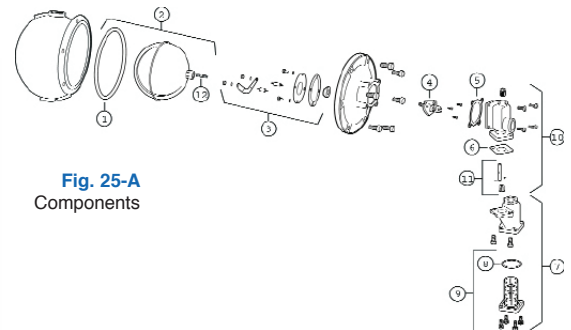
### Replacement Head Mechanisms

For Series	Description	Order #
51	Head Mechanism	<b>MM-51-HD</b>
51-2	Head Mechanism	<b>MM-51-2-HD</b>

## SERIES 25-A - Make-Up Water Feeders

No. 25-A(complete) VNS# **MM-25A**  
 No. 25-AHD . . . . . VNS# **MM-25A-HD**  
 (Head Assembly)

- For boiler receiver tanks.
- Float operated.
- Proportional feed action.
- Soft seat provides positive seal.
- Seal between float chamber and valve chamber is not a positive seal.
- Maximum water supply pressure, 100psi.
- Maximum pressure, 35psi.



**Fig. 25-A**  
Components



Item #	Model/Order #	Description
1	<b>MM-F-26</b>	Gasket
2	<b>MM-421-30</b>	Float
3	<b>MM-SA27T-75</b>	Diaphragm Seal Assembly (includes items 1&4)
4	<b>MM-SA25-5</b>	Arm Assembly
5	<b>MM-21-27</b>	Gasket
6	<b>MM-37-28</b>	Gasket
7	<b>MM-SA51-9R</b>	Strainer Assembly (Includes item 7)
8	<b>MM-37-101</b>	Tetreseal O-Ring
9	<b>MM-SA21-38R</b>	Strainer Basket
10	<b>MM-SA25A-6</b>	Valve Assembly
11	<b>MM-SA25A-15</b>	Stem & Disc Assembly



**SERIES 150 Low Water Cut-Offs**

**S=Mercury Free Controllers- All other models utilize a mercury switch.**

No. 150S (Low Water Cut-Off/Pump Controllers) . . .	VNS#	MM150S . . . . .
No. 150 (Low Water Cut-Off/Pump Controllers). . . .	VNS#	MM150 . . . . .
No. 150S-J (150S w/ BSPT Threads) . . . . .	VNS#	MM150S-J . . . . .
No. 150-J (150 w/ BSPT Threads). . . . .	VNS#	MM150-J . . . . .
No. 150S-MD (150S w/ Maximum Differential) . . . .	VNS#	MM150S-MD . . . . .
No. 150-MD (150 w/ Maximum Differential). . . . .	VNS#	MM150-MD . . . . .
No. 150S-M (150S w/ Manual Reset) . . . . .	VNS#	MM150S-M . . . . .
No. 150-M (150 w/ Manual Reset) . . . . .	VNS#	MM150-M . . . . .
No. 150S-M-MD (150S-M w/ Maximum Differential) .	VNS#	MM150S-M-MD . . . . .
No. 150-M-MD (150-M w/ Maximum Differential) . . .	VNS#	MM150-M-MD . . . . .
No. 150S-J-M (150S-M w/BSPT Treads . . . . .	VNS#	MM150S-J-M . . . . .
No. 150-J-M (150-M w/BSPT Treads . . . . .	VNS#	MM150-J-M . . . . .



**SERIES 150**

- For industrial and commercial low or high pressure boiler applications.
- For boilers of any steaming capacity.
- Monel bellows provides corrosion resistance.
- Mercury switch for high temperature service.
- Optional Features - Manual Reset, BSPT Threads.
- Maximum pressure, 150psi.

**SERIES 150-MD**

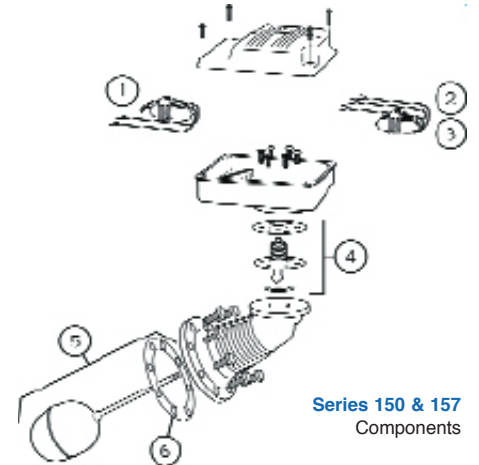
- Maximum Differential Operation - Prevents nuisance burner shutdowns in low pressure applications
- Maximum operating pressure, 50psi.

**SERIES 150S**

- For industrial and commercial low or high pressure boiler applications.
- For boilers of any steaming capacity.
- Monel bellows provides corrosion resistance.
- Snap action switches for high temperature service.
- Optional Features - Manual Reset, BSPT Threads.
- Maximum pressure, 150psi.

**SERIES 150S-MD**

- Maximum Differential Operation - Prevents nuisance burner shutdowns in low pressure applications
- Maximum operating pressure, 50psi.



**Replacements for Mercury  
Controllers 150 & 157**

Item #	Model/Order #	Description
1	MM-SA150-125	Mercury switch, 2 wire
2	MM-SA150-124	Mercury switch, 3 wire
3	MM-SA150M-124	Mercury Switch, 3 wire (manual reset)
4	MM-SA150-106R	Bellows Assembly
5	MM-SA150-11	Float & Rod
6	MM-150-14H	Head Gasket (for raised face head flange, 8 holes)

**Replacement Head Mechanisms**

For Series	Repl. Head Model #	Description	Order #
150	150S	Head Mechanism	MM-150S-HD
	150S-M	Head Mechanism	MM-150S-M-HD



**SERIES 157 Low Water Cut-Offs**

**S=Snap Action Controllers- All other models utilize a mercury switch.**

- No. 157S (150S Low Water Cut-Off w/water column) . . . VNS# **MM157S** . . . . .
- No. 157 (150 Low Water Cut-Off w/water column) . . . . VNS# **MM157** . . . . .
- No. 157S-MD (157S w/ Maximum Differential) . . . . . VNS# **MM157S-MD** . . . . .
- No. 157-MD (157 w/ Maximum Differential). . . . . VNS# **MM157-MD** . . . . .
- No. 157S-M (157S w/ Manual Reset) . . . . . VNS# **MM157S-M** . . . . .
- No. 157-M (157 w/ Manual Reset) . . . . . VNS# **MM157-M** . . . . .



**SERIES 157**

- For residential, industrial and commercial low or high pressure boiler applications.
- For boilers of any steaming capacity.
- Monel bellows provides corrosion resistance.
- Float chamber w/ integral water column provided
- Mercury for high temperature service.
- Optional Features - Manual Reset, BSPT Threads.
- Maximum pressure, 150psi.

**SERIES 157-MD**

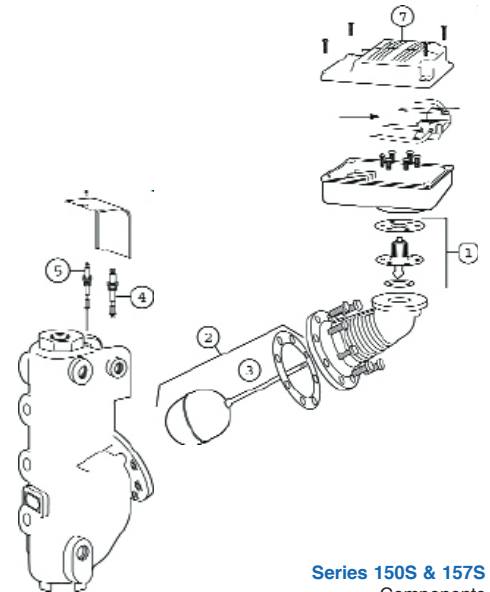
- Maximum Differential Operation - Prevents nuisance burner shutdowns in low pressure applications
- Maximum operating pressure, 50psi.

**SERIES 157S**

- For residential, industrial and commercial low or high pressure boiler applications.
- For boilers of any steaming capacity.
- Monel bellows provides corrosion resistance.
- Float chamber w/ integral water column provided
- Snap action for high temperature service.
- Optional Features - Manual Reset, BSPT Threads.
- Maximum pressure, 150psi.

**SERIES 157S-MD**

- Maximum Differential Operation - Prevents nuisance burner shutdowns in low pressure applications
- Maximum operating pressure, 50psi.



Series 150S & 157S Components

**Replacements for Mercury Free Controllers 150S & 157S**

Item #	Model/Order #	Description
1	<b>MM-SA150-106R</b>	Bellows Assembly
2	<b>MM-SA150-11</b>	Float & Rod
3	<b>MM-150-14H</b>	Head Gasket (for raised face head flange, 8 holes)
4	<b>MM-EA-157-S</b>	Short Electrode
5	<b>MM-EA-157-L</b>	Long Electrode
7	<b>MM-150-436</b>	Cover

**Replacement Head Mechanisms**

For Series	Repl. Head Model #	Description	Order #
157	157S	Head Mechanism	<b>MM-150S-HD</b>
	157S-M	Head Mechanism	<b>MM-150S-M-HD</b>
	157A	Head Mechanism	<b>MM-150-HD</b>
	157-RSP-MD	Head Mechanism	<b>MM-150-MD-HD</b>

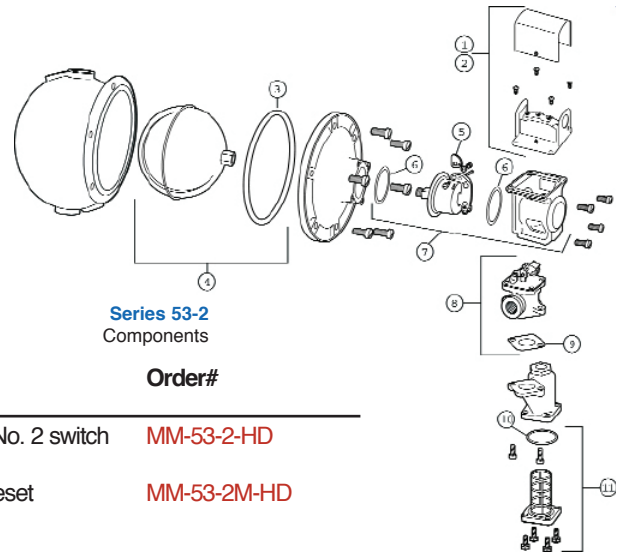


**SERIES 53-2**

**Water Feeder/Low Water Cut-offs**

No. 53-2 . . . VNS# **MM-53-2**  
No. 53 . . . . . VNS# **MM-53**

- For low pressure steam and hot water boilers larger than 5,000sq. ft. with hot or cold water feed.
- Integral strainer.
- No. 2 cut-off switch included
- Optional features 1.) Manual Reset 2.) Float Block
- Maximum water supply pressure, 150psi.
- Maximum pressure, 75 psi.



Series 53-2 Components

**Replacement Head Mechanisms**

For Series	Repl. Model #	Description	Order#
53	53-2-HD	Head Mechanisms w/ No. 2 switch	<b>MM-53-2-HD</b>
	53-2M-HD	53-2-HD with Manual reset	<b>MM-53-2M-HD</b>



Item #	Model/Order #	Description
1	<b>MM-2</b>	Low Water Cut-off Switch
2	<b>MM-2-M</b>	No. 2 with Manual reset
3	<b>MM-F-26</b>	Gasket
4	<b>MM-FLT-53</b>	Float
5	<b>MM-CO-106</b>	Cam Assembly
6	<b>MM-37-27</b>	Gasket
7	<b>MM-BA-53</b>	Bellows bracket Assembly
8	<b>MM-SA53-6</b>	Valve Assembly
9	<b>MM-37-28</b>	Gasket
10	<b>MM-37-101</b>	Tetreseal O-ring
11	<b>MM-SA37-38</b>	Strainer Basket

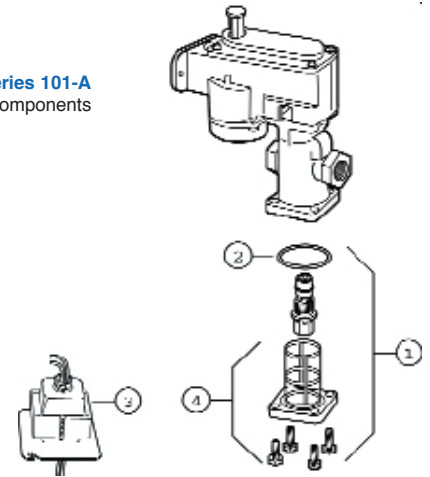


**SERIES 101-A - Electric Water Feeders**

No. 101-A . . . . VNS# **MM-101-A**  
No. 101-A-24V . VNS# **MM-101-A-24V**

Item #	Model/Order #	Description
1	<b>MM-CTRD-101</b>	Cartridge & Strainer Kit
2	<b>MM-37-101</b>	Tetreseal O-ring
3	<b>MM-101-24V-48</b>	Transformer (24V)
4	<b>MM-SA101-38</b>	Strainer Basket Assembly

Series 101-A Components



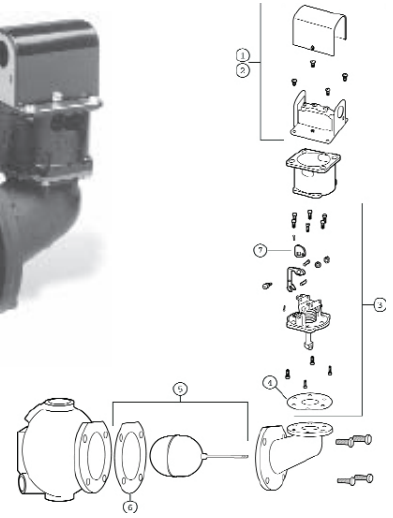
- For low pressure steam boilers with cold water feed.
- Eliminates necessity to manually add water to the boiler.
- Can be used with mechanical or electronic low water cut-off controls.
- Quick-change replaceable cartridge valve and strainer.
- Manual feed button.
- Model 101-A features a 120VAC solenoid
- Model 101-A-247 features a 24VAC solenoid and a separate 50VA transformer
- Maximum water pressure, 150psi.
- Maximum boiler pressure, 25psi.
- Maximum water temperature, 120F
- Maximum power consumption, 40VA @ 24VAC, 40VA @ 120VAC



**SERIES 63 - Low Water Cut-offs - Float Type**

No. 63 . . . . VNS# **MM-63**  
No. 63M . . . VNS# **MM-63-M**

- For residential and commercial low and high pressure steam boiler applications.
- For boilers of any steaming capacity.
- Heavy Duty
- Packless bellows
- Optional manual reset available.
- Maximum boiler pressure, 50psi.



**Series 63**  
Components

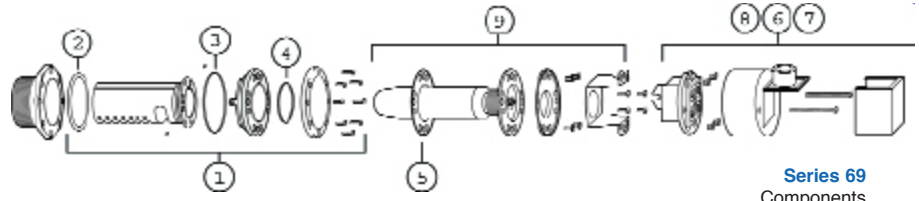
Item#	Model/Order#	Description
1	<b>MM-2</b>	Low Water Cut-off Switch
2	<b>MM-2-M</b>	No. 2 with Manual Reset
3	<b>MM-SA63-5</b>	Bellows Assembly
4	<b>MM-CO-11</b>	Gasket
5	<b>MM-SA63-30</b>	Float
6	<b>MM-CO-12</b>	Head Gasket
7	<b>MM-CO-106</b>	Cam

**Replacement Head Mechanisms**

For Series	Repl. Head Model #	Description	Order #
63	63 HD	Head Mechanisms w/ No. 2 Switch	<b>MM-63-HD</b>
<del>63-B</del>			
63-BM 63-M	63-M-HD	63-HD w/ Manual Reset	<b>MM-63-M-HD</b>

**SERIES 69 - Low Water Cut-offs**

No. 69 . . . . VNS# **MM-69**  
No. 169 . . . . VNS# **MM-169**



**Series 69**  
Components

- For residential and commercial low pressure boiler applications.
- For boilers of any steaming capacity.
- For mounting in 2 1/2"NPT boiler side tapplings
- Adjustable BX outlet for easy installation.
- Dual precision switches for dependable operation of the low water cut-off and alarm or electric water feeder.
- Float chamber provided.
- 1/4"NPT pressure control tapping provided.
- Maximum steam pressure, 20psi.

For Series	Repl. Head Model #	Description	Order #
69	6667	Head Mechanisms	<b>MM-6667</b>
69-MV-P	6667-MV	6667 w/Millivolt Service	<b>MM-6667-MV</b>

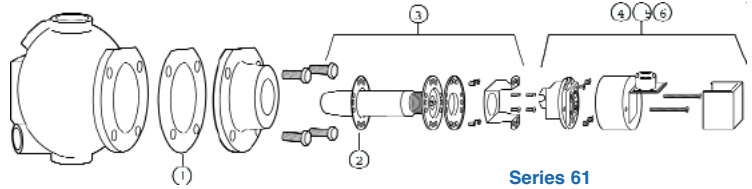
Item #	Model/Order #	Description
1	<b>MM-SA69-104</b>	Shield Assembly
2	<b>MM-69-112</b>	Gasket
3	<b>MM-69-113</b>	O-Ring
4	<b>MM-69-114</b>	O-Ring
5	<b>MM-67-12</b>	Gasket
6	<b>MM-11</b>	No. 11 Switch
7	<b>MM-11M</b>	No. 11 Switch w/ Manual Reset
8	<b>MM-11-MV</b>	No. 11 Switch For Millivolt Service
9	<b>MM-SA67-2</b>	Float and Bellows Assembly



**SERIES 61 - Low Water Cut-offs - Float Type**

No. 61 . . . . VNS# **MM-61**

- For residential and commercial low pressure steam boiler applications.
- For boilers of any steaming capacity.
- Adjustable BX outlet for easy installation.
- Dual precision switches for dependable operation of the low water cut-off and alarm or electric water feeder.
- Packless bellows.
- 1" NPT equalizing pipes and blow down valve required.
- Maximum steam pressure, 20psi.



Series 61 Components

Item #	Model/Order #	Description
1	<b>MM-C0-12</b>	Head Gasket
2	<b>MM-67-12</b>	Gasket
3	<b>MM-SA67-2</b>	Float and Bell Assembly
4	<b>MM-11</b>	No. 11 Switch
5	<b>MM-11M</b>	No. 11 Switch w/ Manual Reset
6	<b>MM-11-MV</b>	No. 11 Switch For Millivolt Service



Replacement Head Mechanisms

For Series	Repl. Head Model #	Description	Order #
61	61-HD	Head Mechanism	<b>MM-61-HD</b>
	6667	Head Mechanism	<b>MM-6667</b>

**SERIES 64 - Low Water Cut-Off**

No. 64 . . . . . VNS# **MM-64**

No. 64-A (w/quick hook-up fittings) . VNS# **MM-64-A**

No. 64-M(w/manual reset) . . . . . VNS# **MM-64-M**

- For residential, commercial and industrial applications.
- For boilers of any steaming capacity.
- Heavy duty.
- Quick hook-up fittings provided with No. 64-A.
- Adjustable BX outlet for easy installation.
- Dual precision switches for dependable operation of the low water cut-off and alarm or electric water feeder.
- Optional manual reset available.
- 1" NPT equalizing pipes required.
- Maximum boiler pressure, 50psi.

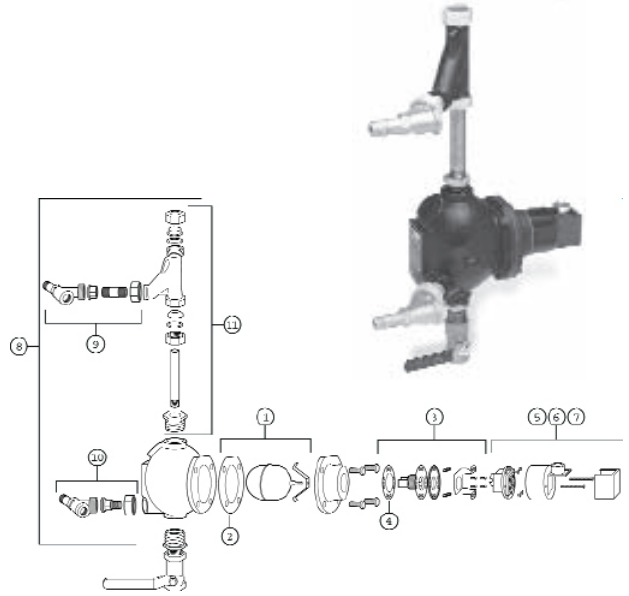


Fig 64-A Components

Item #	Model/Order#	Description
1	<b>MM-SA-64-30</b>	Float Assembly
2	<b>MM-CO-12</b>	Head Gasket
3	<b>MM-SA-64-2</b>	Bellows Asassembly (Includes item 2)
4	<b>MM-67-12</b>	Gasket
5	<b>MM-11</b>	Switch
6	<b>MM-11-M</b>	No. 11 w/ Manual Reset
7	<b>MM-11-MV</b>	No. 11 for Millivolt Service
8	<b>MM-MA-259</b>	Quick Hook-up Fittings (Includes 9,10,11)
9	<b>MM-SA259-24</b>	Upper Quick Hook-up Fittings
10	<b>MM-SA159-24</b>	Lower Quick Hook-up Fittings
11	<b>MM-SA159-17</b>	Black "Y" Assembly

Replacement Head Mechanisms

For Series	Repl. Head Model #	Description	Order #
64	64-HD	Head Mechanism	<b>MM-64-HD</b>



**SERIES 67**

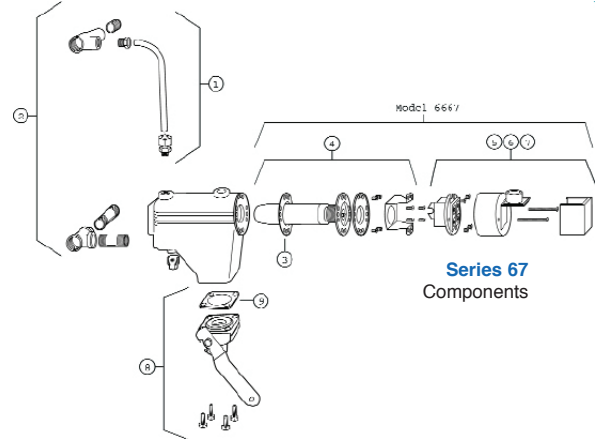
**Low Water Cut-offs/Pump Controllers**

No. 67G . VNS# **MM-67G**

No. 67 . . . VNS# **MM-67**

No. 67M . VNS# **MM-67-M**

- For residential and commercial applications.
- For boilers of any steaming capacity.
- Quick hook-up fittings provided.
- Lever-operated, full port ball valve for easy blow down.
- Adjustable BX outlet for easy installation.
- Dual precision switches for dependable operation of the low water cut-off and alarm or electric water feeder.
- Optional Features: 1.) Low voltage switches for self-generating millivolt circuits.  
2.) Manual reset switch.
- Large float chamber.
- Maximum steam pressure, 20psi.



Item #	Model/Order #	Description
1	<b>MM-SA66-35</b>	Upper Tube Assembly
2	<b>MM-MA559</b>	Quick Hook-up Fittings
3	<b>MM-67-12</b>	Gasket
4	<b>MM-SA67-2</b>	Float and Bellows Assembly
5	<b>MM-11</b>	Switch
6	<b>MM-11-M</b>	Switch w/ Manual Reset
7	<b>MM-11-MV</b>	No. 11 for Millivolt Service
8	<b>MM-14-B</b>	Blow Down Valve
9	<b>MM-37-39</b>	Blow Down Valve Gasket

**Replacement Head Mechanisms**

For Series	Repl. Head Model #	Description	Order #
67	6667	Head Mechanisms	<b>MM-6667</b>
67-LQHU	6667	Head Mechanisms	<b>MM-6667</b>
67-G	6667MV	6667 for Millivolt Service	<b>MM-667MV</b>

**SERIES 93**

**Low Water Cut-offs/Pump Controllers**

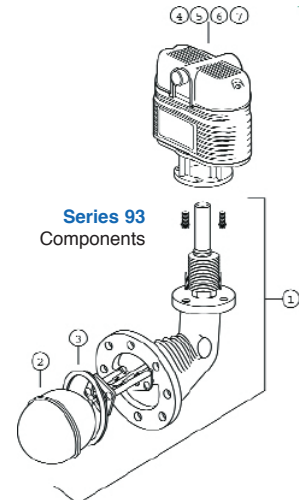
No. 93 . . . . . VNS# **MM-93**

No. 93-M (w/manual reset) VNS# **MM-93-M**

No. 93-7B . . . . . VNS# **MM-93-7B**

- For commercial and industrial low or high pressure steam boilers.
- Maintains consistent water level regardless of pressure.
- For boilers of any steaming capacity.
- No. 5 switch included.
- Magnetic compulsion eliminates need for bellows.
- Optional Features: 1.) Manual reset switch. 2.) On/Off or proportional control switch to maintain constant boiler water level.
- 1"NPT connections.
- Maximum pressure, 150psi.

Item #	Model/Order #	Description
1	<b>MM-93-HDLS</b>	Head w/o Switch
2	<b>MM-SA91-60</b>	Float(includes item 3)
3	<b>MM-150-14</b>	Gasket
4	<b>MM-5</b>	Electric Switch
5	<b>MM-5-M</b>	No. 5 w/ Manual Reset
6	<b>MM-7B</b>	Electric Switch/ Proportion Control
7	<b>MM-7B-M</b>	No. 7B w/ Manual Reset



**Replacement Head Mechanisms**

For Series	Repl. Head Model #	Description	Order #
—	93-HD	Head Mechanism	<b>MM-93-HD</b>

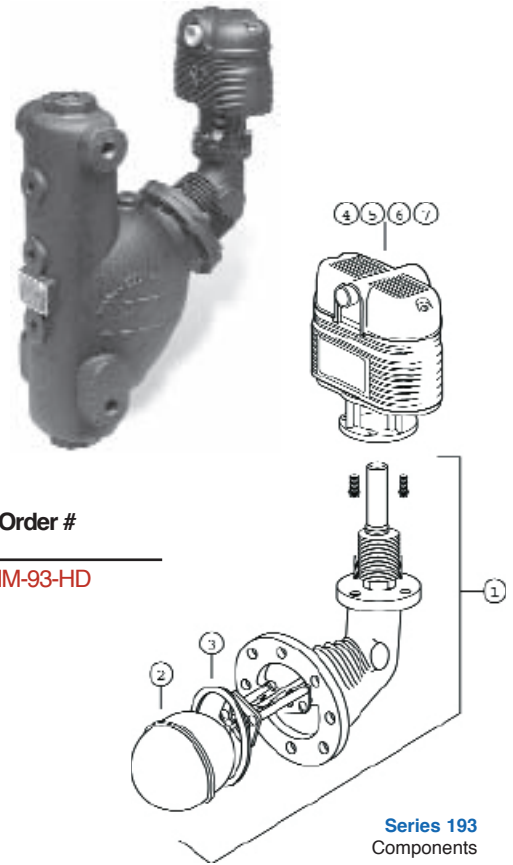


**SERIES 193**

**Low Water Cut-offs/Pump Controllers**

- No. 193(w/ No. 5 Switch) . . . . . VNS# **MM-193**
- No. 193-A (w/alternate tappings) . . . . . VNS# **MM-193-A**
- No. 193-A-M (193A w/manual reset) . . . . . VNS# **MM-193-A-M**
- No. 193-A-7B (193A w/No. 7B Switch) . . . . . VNS# **MM-193-A-7B**
- No. 193-A-7B-M (193A-7B w/manual reset) VNS# **MM-193-A-7B-M**

- For commercial and industrial low or high pressure steam boilers.
- Maintains consistent water level regardless of pressure.
- Water column with integral tappings for gauge glass and tri-cock installations
- For boilers of any steaming capacity.
- No. 5 switch included.
- Magnetic repulsion eliminates need for bellows.
- Optional Features: 1.) Manual reset switch. 2.) On/Off or proportional control switch to maintain constant boiler water level.
- 1"NPT connections.
- Maximum pressure, 150psi.



Replacement Head Mechanisms	For Series	Repl. Head Model #	Description	Order #
	—	93-HD	Head Mechanism	<b>MM-93-HD</b>

Item #	Model/Order #	Description
1	<b>MM-93-HDLS</b>	Head w/o switch
2	<b>MM-SA91-60</b>	Float(includes item 3)
3	<b>MM-150-14</b>	Gasket
4	<b>MM-5</b>	Electric Switch
5	<b>MM-5-M</b>	No. 5 w/ manual Reset
6	<b>MM-7B</b>	Electric Switch/ Proportion Control
7	<b>MM-7B-M</b>	No. 7B w/ manual Reset

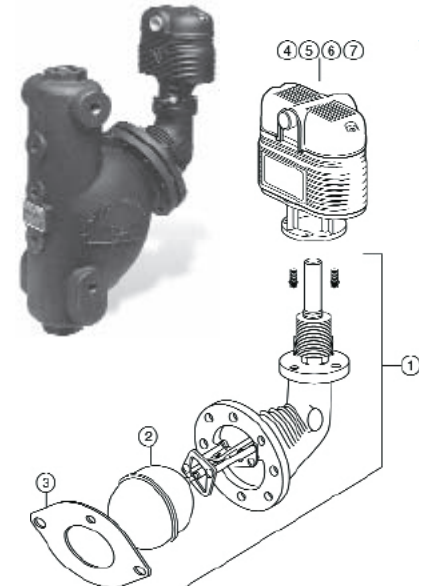
Series 193 Components

**SERIES 94 & 194**

**Low Water Cut-offs/Pump Controllers**

- No. 94. . . . VNS# **MM-94**
- No. 94M . . VNS# **MM-94-M**
- No. 194. . . VNS# **MM-194**

- For industrial and commercial low or high pressure steam boilers.
- Maintains consistent water level regardless of pressure.
- For boilers of any steaming capacity.
- No. 5 Switch included.
- Optional Features: 1.) Manual reset. 2.) On/Off proportional control switch to maintain constant boiler water level.
- 1 1/4" NPT connections.
- Maximum pressure, 250psi.



Series 94 & 194 Components

Item #	Model/Order #	Description
1	<b>MM-94-HDLS</b>	Head w/o switch
2	<b>MM-SA91-60</b>	Float(includes item 3)
3	<b>MM-150-14</b>	Gasket
4	<b>MM-5</b>	Electric Switch
5	<b>MM-5-M</b>	No. 5 w/ manual Reset
6	<b>MM-7B</b>	Electric Switch/ Proportion Control
7	<b>MM-7B-M</b>	No. 7B w/ manual Reset

Replacement Head Mechanisms	For Series	Repl. Head Model #	Description	Order #
	—	94-HD	94 Head Mechanism	<b>MM-94HD</b>
	—	94-M-HD	94-M Head Assembly	<b>MM-94-M-HD</b>
	—	94-7B-HD	94-7B Head Assembly	<b>MM-94-7B-HD</b>