

ORDER TOLL FREE: 800-428-7548

PHONE : 765-446-0881 • FAX: 765-446-1133



Fill Page Only



Pilots for Spence E-Valves

D-PILOT

The Spence D-Pilot is used in conjunction with a Spence E-Valve to control steam pressure. To order, please specify the desired outlet range.

Pressure Ranges Are:

3-20	10-100
5-50	20-150

A-PILOT

The Spence A-Pilot is used in conjunction with a Spence E-Valve to control air pressure at a point some distance from the source.

For pressures up to 250psig -
For pressures up to 600psig -



T-124

T124/T134

The T124 and T134 provide pressure and temperature control when used with the Spence E-valve. The T124 is designed for pressures between 20 psi and 125psi. The T134 is designed for pressures under 20psi. To order, please specify the desired outlet temperature.

T124 - T134-

Pilot Options

DIAL THERMOMETERS

Any Spence Thermometer Pilot can be equipped with a Dial Thermometer. Pilots with Dial Thermometers are available in the following ranges 20-120, 70-170 and the 170-270°F.

ADJUSTMENT INDICATORS

An Adjustment Indicator is a definite convenience where frequent changes in set point are required. Indexed scale makes it easy to return to any previous operating point.

SPRING CHAMBERS

Spence Pressure Pilots can be provided with an enclosed spring chamber.



T-14

T-14

The T14 Pilot provides temperature control when used with the Spence E-Valve. To order please specify the desired outlet temperature.

T14 -

The available temperature ranges for the T124, T134 and the T14 are:

20-120	50-150
70-170	120-220
150-300	250-350
300-400	

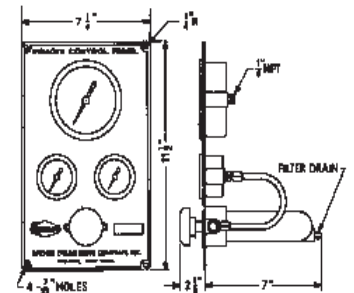
Pilot Repair Kits

Cast Iron &
Cast Bronze

Pilot Type	Catalog #
D & W	SP-07-04164-00
T14	SP-07-06606-00
T124	SP-07-06607-00
T134	SP-07-06608-00

SPENCE TYPE B PANEL BOARD

For use with Spence A Pilots on pressure reducing applications. Gages indicate delivery pressure, available air pressure, available air pressure loading the pilot diaphragm.



SPENCE CONDENSATE COMMANDER PUMP

Driven by pressurized gas or steam, no electrical connections make it preferred for remote or hazardous locations. Required suction head is negligible.

Stainless steel snap acting mechanism in continuous compression is unaffected by turbulence and the single spring assures long service life. The spring has a lifetime warranty. Self centering supply and exhaust valves provide reliable performance and are lapped for tight shutoff.

Head assembly available to fit other manufacturers tanks.

Maximum operating conditions 200 PSIG/400°F on condensate inlet. Tank is ASME Code stamped.

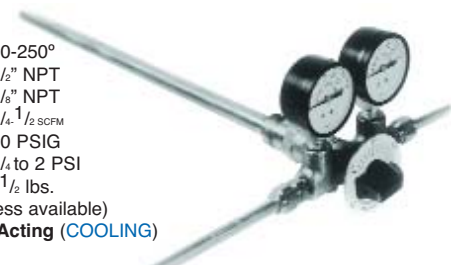


T-61 PNEUMATIC TEMPERATURE CONTROLLER

Is Ideal for wide ranging/fast changing loads. The T-61, when used with a properly selected A Series Pilot, continually adjusts a pressure regulator to the required Heater Pressure. This action—coupled with the fast response of a bimetallic thermostat—gives excellent results.

VNS # SRT61...

- Adjustable Temperature Range: 50-250°
- Mounting: 1/2" NPT
- Air Connections: 1/8" NPT
- Air Consumptions: 1/4-1/2 SCFM
- Air Supply Pressure: 20 PSIG
- Proportional Band(Adjustable): 1/4 to 2 PSI
- Weight: 1 1/2 lbs.
- Bronze Bulb Standard (stainless available)
- Reverse Acting (HEATING) Direct Acting (COOLING)



SPENCE SERIES 2000 SELF ACTUATED TEMPERATURE REGULATOR

*Provides precise control of process temperatures.

*Typical direct acting (used for heating) includes bottle washing, steam tables, plating tanks, heating ducts, oil heaters, and part washers.

*Typical reverse acting (used for cooling) includes engine jacket cooling, induction furnaces, industrial compressors, and liquid chillers.

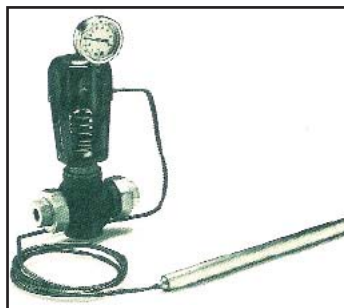
*Available single and double seated from 1/2"- 2" cast bronze (nodular iron used for oil treaters on gas service regulators). Stainless steel seat and disc.

*3 way mixing valve also available.

To order, specify:

- single or double seat or 3way
- direct or reverse acting
- inlet size
- indicating or non-indicating
- thermal assembly
 - copper with brass armored capillary
 - stainless steel unarmored
 - PVC coated copper
 - Teflon coated copper
- capillary length, 8'-15' or other
- temperature range:

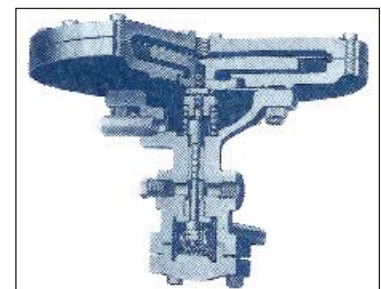
A-15-50	H-90-195
B-15-75	J-120-200
C-45-115	K-120-230
D-45-145	L-240-310
E-65-140	M-240-340
F-65-170	N-280-375
G-90-165	P-280-415



SPENCE SERIES AIR ADJUSTED PILOTS TYPE A

Use the same E Main Valve. With compressed air, offers the convenience of controlling the delivery pressure from a point some distance from the regulator. Delivery pressures available up to 150 PSIG. Uses air economically.

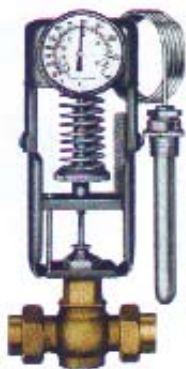
VNS# SRZA.....



**POWERS #11
AUTOMATIC REGULATORS
& MIXING VALVES**



**POWERS ACCRITEM / FLOWRITE
TEMPERATURE CONTROLS**



Delivery of Powers products is usually prompt. Space does not permit the display of pricing for the hundreds of different combinations. Please call us for assistance in your selection.



Rugged self-actuating regulator automatically maintains temperature control in hot water storage heaters, heat exchangers, air compressor cooling systems and tempered water systems. Completely self-contained. Available in a wide variety of temperature ranges and trims. Specify size, temperature desired and inlet pressure.

An Accritem / Flowrite team maintains accurate process temperatures in applications like instantaneous and large volume water heaters, process ovens, diesel engine cooling systems and sewage disposal systems. The Accritem mounts directly in the air or liquid medium being controlled. It detects the slightest temperature change and sends a corrective signal to the Flowrite automatically adjusts the flow of hot or cold water, or steam to maintain desired temperature.

How To Order: State Quantity, Catalog Number, Name, Range and Control Point, Valve Size, Valve Specifications, (a)Body Material (Bronze or Cast Iron)(b)Trim (Bronze or S.S.) (c)Single or Double Seated (d)Type of Valve (Direct or Reverse Acting), Maximum Inlet Pressure, Capacity Required (if valve size is not specified, Tubing Length and Type, Bulb Number and Description, Medium Contacting Bulb, Application, Fluid Passing Thru Valve.



**SELF-OPERATING
REGULATORS
INDICATING**

The No. 9140 Self-Operating Temperature Regulators with indicating feature is sensitive to 1/10° F temperature change. Entirely self-contained, requiring no air or electricity for operation. Valves are furnished with bronze trim; 50 psi and above valves are furnished with stainless steel trim. Available 1/2" through 2" in screwed, bronze body; 2 1/2" - 6" in cast iron, 125lb. flanged body.

Application: No. 91400 recommended for controlling the temperature of hot water tanks, pasturizers, dish washers pickling and plating tanks, cookers feed water heaters, water jackets and heat exchangers for circulating hot water, fuel oil cooling water, etc. NOTE: Not recommended for proportional control. The dial thermometer mounted on the cap can be rotated 340° on a vertical axis and tilted forward and backward 180° and locked in the desired position.

Inlet & Outlet Sizes	SPECIFICATIONS		Price
	For HEATING closes on rising temperatures	For COOLING opens on rising temperatures	
1/2"	Type No. 150-F	Type No. R-150-F	
3/4"	Type No. 151-F	Type No. R-151-F	
1"	Type No. 152-F	Type No. R-152-F	

OPTIONS

- Calibrated adjusting screw with wheel handle for quick adjustment.
- 6 Foot Stainless Steel Capillary and Bulb for plating tanks.
- 6 Foot Plastic Coated Capillary and Bulb for plating tanks.
- Brass and Stainless Steel Bulb Wells.
- Plain Brass Bulb with adapter for open tank or Cabinet Mounting.
- Brass Bulb with Lock Nut for Bracket Mounting.
- Flanged Bulb for Duct Mounting.
- Union Fitting on Capillary for closed tank.
- Other Modifications available - consult VIERK.

Bras Well
Vierk # S1160
Brass



Pressure Rating-lbs.:

Inlet & Outlet:

Valve Body Straightway:

Valve Trim:

Valve Construction:

Standard Capillary Length:

Standard Temperature Ranges Available:

55°-95°F 150°-190°F

85°-125°F 175°-215°F

105°-145°F 185°-225°F

130°-170°F

Optional Broad Temperature Ranges:
(other ranges available - consult VIERK for details)

0-125

Double Union

Brass Body

Stainless Steel Valve Disc,

Stem and Renewable Seat

Ground and Lapped

Single-Seated, Balanced, with

Stainless Steel Seal Bellows

6"; Longer or shorter lengths available

85°-125°F 175°-215°F

105°-145°F 185°-225°F

130°-170°F

80°-170°F

110°-190°F

165°-225°F

NOTE: When ordering, specify size, type number, temperature range, capillary length, working pressure, shut-off temperature (controls are factory set at middle of range unless otherwise specified).



HYDRO-PRO 150™ AUTOMATIC



HYDRO-PRO 150 WATER SAVER

A new design that allows users to **safely** (no steam burns) wash down equipment with up to 200°F water.

Maximum Operating Temperature:
200°F(93°C)

Maximum Operating Pressure:
150 psi(10 bar)

Flowrates:
5-7 gpm under normal conditions
(50-70psi) 10gpm Max @ 150 psi

Standard Features:

- Light weight means less operator fatigue.
- Patented Locking trigger mechanism provides for several spray patterns.
- Stainless Steel body for strength and durability.
- Wear-resistant Nylon cover.

- Cover design keeps the nozzle cool in your hand even when using 200°F water.
- Inlet Screen Strainer prevents the accumulation of solids in the spray nozzle.
- Quality system registered to ISO 9002-1994, QMI certificate #003264.

VNS#	COLOR	ADAPTER	ITEM #
SMHP150B	BLACK	NO	16723
		#21 HOSE	
		#21S SWIVEL	
SMHP150R	RED	NO	17022
		#21 HOSE	
		#21S SWIVEL	
SMHP150W	WHITE	NO	17021
		#21 HOSE	
		#21S SWIVEL	



Hydroguard Thermostatic Controls

Hydroguard Series 430 delivers extremely accurate control for showers, hydrotherapy and tempered water service. It is the reliable stand-by of Hospitals, Industrial plants and Commercial users to protect against both temperature and pressure changes in the supply lines.



Model	VNS #	Finish	Inlets/Outlets	Wt.(lbs.)
431-1065	PR201	Rough Brass	3/4" - 3/4"	11.5
431-2065	PR203	Polished Chrome	3/4" - 3/4"	11.5
432-1065	PR205	Rough Brass	3/4" - 1"	14.0
432-2065	PR207	Polished Chrome	3/4" - 1"	14.0
433-1065	PR209	Rough Brass	1 1/4" - 1 1/4"	26.0
433-2065	PR211	Polished Chrome	1 1/4" - 1 1/4"	26.0
434-1065	PR213	Rough Brass	1 1/4" - 1 1/2"	30.0
434-2065	PR215	Polished Chrome	1 1/4" - 1 1/2"	30.0

65°F - 115°F Range Standard Ranges 40° - 90°F and 85° - 160°F Available at Higher Cost

POPULAR REPAIR PARTS ARE PRICED BELOW

Motor Replacement	VNS#	#431	VNS#	#432	VNS#	#433	VNS#	#434
Motors Control All Temp Ranges	PR264	#390-016	PR265	#390-0170	PR266	#390-511	PR267	#390-512
Strainer Replacement	PR268	#230-134	PR268	#230-134	PR269	#230-136	PR269	#230-136
Checkstop replacement	PR250	#230-135	PR253	#230-135	PR251	#230-137	PR251	#230-137
Gasket and Disc Replacement	PR252	#390-294	PR253	#390-298	PR254	#390-302	PR255	#390-306

MODEL M-5000

Temperature indicating instant hot water maker will produce hot water instantly and keep on producing it as long as there is a constant supply of steam and cold water. This unit comes fitted with 50 ft. of High Pressure water hose, with Stainless Steel Protective internal Spring

Required steam pressure 80-95# and water 50-80#



Assembles in both ends of hose with Strahman Automatic Water Saver Spray nozzle.

- Maximum recommended operating temperature 200°F/93.33°C.
- Maximum working pressure-150 psi
- Dual Fahrenheit - Centigrade gauge standard.

Unit furnished complete as shown. Material: Bronze with Stainless Steel internal parts. Furnished with either globe or angle valves 3/4" size only.

Options Available: White Hose, Nozzle with Renewable White Rubber

Cover, Chrome Plated.

Black Replacement Hose

25' less Nozzle VNS#...SM025 - Price...
50' less Nozzle VNS#...SM050 - Price...



MODEL M-70 (Black Cover) Automatic Saver SPRAY NOZZLE



M-70 in stock for immediate shipment

SPECIFY HOSE CONNECTION 5/8" STANDARD

- For water use only
- Maximum working pressure-150 psi
- Maximum recommended operating temperature 200°F/93.33°C.

Black Cover
VNS#...SM070
M-70...

White Cover
VNS#...SM075
M-75...

Note: All Stainless Steel nozzle available upon request.

M-70 Repair Kit
SM080
20B Black Cover only
SM090
White Cover Only
SMZ9



MODEL M-159 MIXING UNIT, HOSE STATION for Hot and Cold Water

Wall Mounted Type Unit—
A complete mixing unit and hose station thoroughly blending hot and cold water in any desired proportion. Its rugged construction and simplicity of operation combine to make it an essential piece of equipment where washup operations are a requirement.

- Maximum recommended operating temperature 200°F/93.33°C.
- Maximum working pressure 150 psi
- Operable on normal city water pressure

Unit furnished complete as shown. Material: Bronze with Stainless Steel internal parts. Furnished with either globe or angle valves. 3/4" size only.

Options Available: White Hose, Nozzle with renewable White Rubber Cover, Chrome Plated.

DANFOSS RA2000

Thermostatic Radiator Valves.

The new Danfoss RA 2000 is your best thermostatic radiator valve buy, for several reasons:

RA 2000 thermostatic radiator valves utilize the latest vapor filled bellows system from Danfoss, the trusted worldwide leader in thermostatic radiator valves for over 30 years.

RA 2000 installation is easy, thanks to (A) the snap-on fitting of the operator to the valve and (B) the convenient choice of straight, angle, and side-mount, 1/2" through 1 1/4" valves. The new adjustable capillary streamlines remote sensor installation, too.

For the building owner and tenant, RA 2000 thermostatic ra-

diator valves feature a new designer style look; an improved maximum/minimum temperature limit and lock; and a new, easy-to-use memory ring. A special tamper-resistant model with heavy-duty collar, setting lock, and operator/valve connection lock is available for application where vandalism and abuse is a primary concern.

Add the dramatic improvement in hot water or 2-pipe low pressure steam heating system balance, comfort, and fuel efficiency, and the RA 2000 becomes an exceptional value for the dollar.

Symbols	Code No.	Description	Design	Capillary Length	Temp. Range	Max. Sensor Temp.
	013G8200	"Built -in"	Valve-mounted sensor and dial		45-86°F	140°F
	013G8220	"Built -in"	Tamper-resistant valve mounted sensor and dial			
	013G8202	"Remote"	Valve-mounted dial and remote sensor	6"		
	013G8562	"Wall Mount"	Combined remote-mounted sensor and dial	6"		
	013G8565	"Wall Mount"	Combined remote mounted sensor and dial	16"		



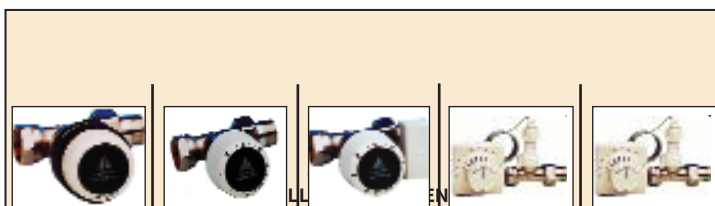
Item **TOOL SET RA2000** Code # **#013G1236** Price

Quick Selection Table

RA 2000

THERMOSTATIC RADIATOR VALVE

For use on hot water and two-pipe low-pressure steam systems

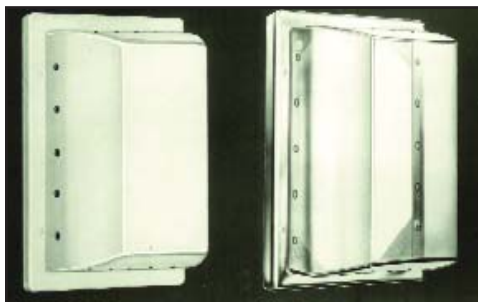


— — 6 1/2' 6' 16'

Configuration	Connection FPT x MPT	Code #	Price				
	1/2" NPT	013G8015					
	3/4" NPT	013G8020					
	1" NPT	013G8025					
	1 1/4" NPT	013G8032					
	1/2" NPT	013G8014					
	3/4" NPT	013G8019					
	1" NPT	013G8024					
	1 1/4" NPT	013G8031					
	1/2" NPT	013G8013					
	3/4" NPT	013G8018					
	1" NPT	013G8023					
	1 1/4" NPT	013G8030					

RA 2000-1PS THERMOSTATIC RADIATOR VALVE

For use on one-pipe low-pressure steam systems



12 or more less 5% (can be assorted)

VANDAL-PROOF THERMO GARD THERMOSTAT COVERS

Thermo-Gard mounts to its own back frame with four stainless steel tamper-proof screws.

Thermo-Gard is made of tough, inflexible, injection molded Herculex. Indestructible cover can take full hammer blow or the impact of a .22 caliber bullet.

Cover Packed 6 per Ctn.

- TG-1 Opaque White
- KD011 Thermostat Cover
- TG-2 Clear Thermostat Cover
- KD012
- 9500 *Special Screwdriver for
- KD001 Tamperproof Screws

At least one screwdriver required to install

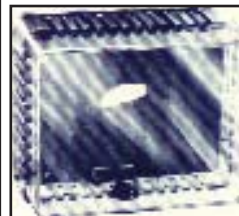
CONTROL HEAT AND COOLING

with

THERMOSTAT GUARD

BTG-UK CLEAR
KD100...

Box. of 12



TRETRICE PRESSURE GAUGES



#800 SERIES

Steel Case, Black Finish Bottom Outlet, 1/4" N.P.T. Phosphor Bronze Bourdon Tube, 2% Accuracy Mid Range

Stock Sizes	2 1/2" Dial	4" Dial
0-15, 0-30, 0-60, 0-100 0-160, 0-200, 0-300 lbs.		
0-600, 0-1000 lbs.		
#800 Compound Gauges 30 - 15 lbs.		
#800 Vacuum Gauges 0-30"		



Coil Syphon Required with Steam Application

#500XB SERIES

Case-4 1/2"-cast aluminum (black flange), Window-clear glass, Socket-forged brass-1/4" N.P.T.

Stock Ranges	4 1/2" Dial
0-15, 0-30, 0-60, 0-100 0-160, 0-200, 0-300 lbs.	
0-600, 0-1000 lbs.	
500XB Compound Gauges 30 - 15 lbs.	



PRESSURE GAUGES RECALIBRATED

Send your used gauges prepaid for recalibration.

We will not proceed with any gauge that is beyond economical repair.



LIQUID FILLED PRESSURE GAUGES No. 800 LF Series, 2 1/2", 3 1/2"

LIQUID FILLS: This gauge is standard filled with glycerin to dampen vibration and fluid pulsation.

Available Ranges:	2 1/2" Dial	3 1/2" Dial
0-15, 0-30, 0-60, 0-100 0-160, 0-200, 0-300 lbs.		
0-600, 0-1000 lbs.		

BOURDON TUBE: Phosphor bronze.
SOCKET: Brass-1/4" N.P.T.
CASE: Nylon- black finish.
WINDOW: Acrylic plastic.

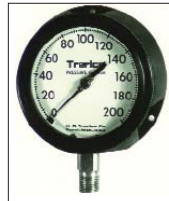
No. 450LFB Series, 4 1/2"

LIQUID FILL: This gauge can be completely filled with glycerin or silicone to dampen vibration and fluid pulsation. It also has a temperature compensating bladder to maintain accuracy.

BOURDON TUBE: Phosphor bronze with brass socket.

CASE: Black-fiberglass reinforced polypropylene.

WINDOW: Acrylic plastic - has outstanding weatherability.



Available Ranges	4 1/2" Dial
0-15, 0-30, 0-60, 0-100 0-160, 0-200, 0-300 lbs.	
0-600, 0-1000 lbs.	

PRESSURE SNUBBERS



VNS# TG190
#872 BRASS
1/4" N.P.T.

Porous Core Liquid or Air Only

SLING PSYCHROMETER



VNS# AB002
With Black Leatherette case 8 1/2"
Humidity chart
Range 0 to 110°F



COIL SYPHONS

VNS#-ST801 #886 Angle
VNS#-ST800 #885 Straight

1/4" N.P.T. Sched. 80
Seamless Steel for Steam
1/4" IPS Price

THERMOMETERS AND ACCESSORIES

FIXED FORM INDUSTRIAL THERMOMETERS

Econo-Therm Series, Red Reading Mercury, 6 3/4" Aluminum Case, 2" plated brass socket, 3/4"

VNS#	Temp Range	
TT030	-40-10°F	#4350
TT031	30-240°F	#4350
TT032	30-300°F	#4350
TT040	-40-100°F	#4352
TT041	30-240°F	#4352
TT042	30-300°F	#4352



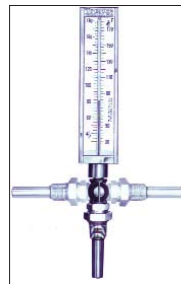
#4352

#4350

ADJUSTABLE ANGLE INDUSTRIAL THERMOMETERS

Adjustable Angle, Red Reading Mercury, 9" Chrome Case, plated brass socket, 3/4" N.P.T.

VNS#	Temp Range	
TT011	0-100°F	#BX91403.5
TT013	0-160°F	#BX91403.5
TT015	30-240°F	#BX91403.5
TT016	30-300°F	#BX91403.5
TT018	50-400°F	#BX31403.5



VNS# TT011

ADJUSTABLE ANGLE DIAL THERMOMETERS

3 1/2" Stainless Steel Case, Adjustable Angle, 5 ft. capillary tubing with Brass separable socket, 30°-240°F

VNS# TT085 #V80025 1/2" N.P.T.

VNS# TT070 #7-3D2 Brass Well

DIAL THERMOMETER

3 1/2" Stainless Steel Case, Adjustable Angle, Direct mount with Brass separable socket, 30°-240°F

VNS# TT005 - #V80030

VNS# TT070 - #7-3D2 Brass Well



VNS# TT085

TEMPERATURE-PRESSURE GAUGE



#PT1088 VNS#
1/2" Bottom Connected ZZPT1088S
1/2" Back Connected ZZPT1088
Gauge registers pressure from 0 lbs. to 50 lbs. Thermometer range is 60°F to 260°F. Tube 2" in length. Tapping 1/2". Weight 1 1/4" lb.



HYGROMETER and Temperature Indicator

Show relative humidity and temperature in both Fahrenheit and Centigrade. VNS# AB001

Accurate ±3%
5" dial solid brass case.
Drilled for wall mounting

DIGITAL DP300

Range -58°to 302°F
VNS# CO001



BIMETAL THERMOMETERS

All Stainless Steel Case & Bulb 3" Dial, 4" Stem, Back Conn., 30°-240°F.

VNS# TT024

- #B83104X



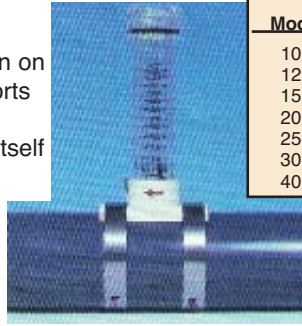
POCKET DIAL THERMOMETER

Range 0°-220°F
Cat.# B81105X
VNS# TT061



FLOW METER ...WITH PERMANENT HOT STAMPED MARKINGS

Here is a simple but effective flow meter for installation on 1", 1 1/4", 1 1/2", 2", 2 1/2", 3" or 4" pipe. The water flow supports an indicator in the gauge which is calibrated in gallons per minute (metric calibrated units also available). The gauge itself can be removed easily for cleaning without damage to the



Model	VNS#	Nominal Pipe Size	Range	
			G.P.M.	Liters/Min.
10P	EC250	1"	5-35	20-130
12P	EC251	1 1/4"	10-60	40-230
15P	EC252	1 1/2"	20-80	75-300
20P	EC253	2"	30-140	115-530
25P	EC254	2 1/2"	40-200	150-760
30P	EC255	3"	80-350	230-1325
40P	EC256	4"	150-600	530-2270

MIDWEST SIGHT FLOW INDICATORS — 125 P.S.I.



100
For Use 10 200°F

MODEL 100
Spinner type, single window — brass body

SIZE	VNS#
1/4"	MW001
3/8"	MW002
1/2"	MW003
3/4"	MW004
1"	MW005
1 1/4"	MW006
1 1/2"	MW007
2"	MW008



MODEL 300
Spinner type, double window — brass body

SIZE	VNS#
1/4"	MW101
3/8"	MW102
1/2"	MW103
3/4"	MW104
1"	MW105
1 1/4"	MW106
1 1/2"	MW107
2"	MW108



PIPE THERMOMETER

2 1/2" easy to read dial for easy reading of pipe surface temperature. Installs in seconds with mounting spring. Fits 1" thru 3" pipe.

Model# — 70046
VNS# — CL046
30 to 250°...

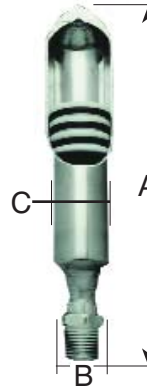
Series 88S

Stainless Steel "Y" Type Strainer
600 lbs. ANSI
For Steam and Liquid Service
Sizes 1/4" Through 2"
Screwed End Connections

- Bottom cap sealed off from media
- Bottom cap tapped for closure plug
- .057 perforations, stainless steel screen*
- Pressure-temperature rating in accordance with ANSI B16.34



Model	Size
88S	1/4" 3/8"
88S	1/2"
88S	3/4"
88S	1"
88S	1 1/4"
88S	1 1/2"
88S	2"



WATER HAMMER ARRESTER

MIPS Thd.	PDI Size	Sloux Chief Item #	Dimensions			Fixture Unit Cap.
			A	B- Hex	C	
1/2"	A	652-A	7 1/2"	1 3/8"	1 3/8"	1 to 11
3/4"	B	653-B	13 1/4"	1 1/2"	1 3/8"	12 to 32
1"	C	654-C	9 7/8"	1 5/8"	1 3/8"	33 to 60
1 1/4"	D	655-D	11 3/8"	1 11/8"	2 1/8"	61 to 113
1 1/2"	E	656-E	14 1/4"	1 7/8"	2 1/8"	114 to 154
2"	F	657-F	16"	2 1/8"	2 1/8"	155 to 330

PIPELINE STRAINERS available Threaded or Flanged



Style "B"



Style "F"

For steam, gas or liquids. Cap design provides a sediment collection chamber below screen. Screens are constructed of sturdy woven mesh or perforated metal, rolled into a rigid, cylindrical shape, resistance seam welded and fitted into the strainer body.



Style "A"

THREADED STRAINERS							
Style B 250# Cast Iron				Style F 300# Bronze			
Size	VNS#	Complete Strainer	Screen Only	VNS#	Complete Strainer	VNS#	Screen Only
1/4, 3/8	KC511, KC512			KC311, KC312		KC441, KC442	
1/2	KC513			KC313		KC443	
3/4	KC514			KC314		KC444	
1	KC515			KC315		KC445	
1 1/4	KC516			KC316		KC446	
1 1/2	KC517			KC317		KC447	
2	KC518			KC318		KC448	
2 1/2	KC519			—		KC449	
3	KC520			—		KC450	

FLANGED STRAINERS, STYLE A					
		250# Iron		300# Bronze (BA)	
Size	VNS#	Complete Strainer	Screen Only	Complete Strainer	Screen Only
2	KC501				
2 1/2	KC502				
3	KC503				
4	KC504				
5	KC505				
6	KC506				
8	KC507				
10	KC508				
12	KC509				

Conbraco AIR AND STEAM COCKS



VNS#	Size
CI503	1/8"
CI504	1/4"
CI505	3/8"
CI506	1/2"



VNS#	Size
CI510	1/8"
CI511	1/4"



VNS#	Size
CI510	1/8"
CI511	1/4"
CI501	3/8"
CI502	1/2"



VNS#	Size
CI512	3/8"
CI513	1/2"
CI513	3/4"

**PYREX RED-LINE
GAUGE GLASS
ALWAYS IN STOCK!**



For Boiler Water Gauges and Liquid Level Gauges

300# @
425°F

1/2" O.D. x 36"
5/8" O.D. x 36"
3/4" O.D. x 36"

Stocked in 36" lengths.

WE CUSTOM CUT!! EXTRA HEAVY AVAILABLE IN STOCK!!

SQUEEZE & POP! GLASS CUTTER

Chain Only.....



VNS#

Gauge Glass Gaskets Black Rubber Square Section

Size
1/2"
5/8"
3/4"

Brass Friction Washers

Size
5/8"
3/4"

Molded Cone Gaskets



Size
5/8"
3/4"



**#CI582
Copperclad
Guard Rods**
Diameter:3/16"
Length:14"

Radiator Valves For Steam And Hot Water Heating Systems



**100
Radiator
Valve**



**300
Radiator
Fittings**

Union elbow, male union,
female pipe inlet

Steam angle, renewable
composition steam disc, male union

	#100	#300
Size	VNS#	VNS#
1/2"	HV021	HV001
3/4"	HV022	HV002
1"	HV023	HV003
1 1/4"	HV024	HV004
1 1/2"	HV025	

Air Valves



No. 27-202 Loose Keys
1/8" I.P.S. .



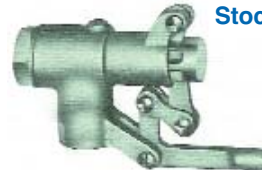
No. 2404 Keys Only
for Air Valves.

Oil Barrell Faucet



No. 252 Hose End
3/4" I.P.

Stock Watering Valve



No. 14	
Size	Price
1/2"	
3/4"	
1"	

GAS COCKS



Manual Main
Control Valve

No.	VNS #	Pipe Size
*50-203	CI439	1/2"F x 1/2"F
*50-303	CI440	3/4"F x 3/4"F
*50-403	CI441	1"F x 1"F
*50-503	CI442	1 1/4"F x 1 1/4"F
*50-603	CI443	1 1/2"F x 1 1/2"F
*50-703	CI444	2"F x 2"F
*50-803	CI445	2 1/2"F x 2 1/2"F

*Designed certified by A.G.A and C.G.A.

THESE VALVES MEET ANSI STANDARDS AND ARE DESIGN CERTIFIED BY A.G.A. AND C.G.A. FOR TEMPERATURE FROM 32°F -125°F.

- Designed to meet (ANS Z 21.15) pressure requirements of 1/2 P.S.I.
- Valves are tested per (ANS Z 21.15) at 3 P.S.I.
- The listed capacities for these valves are based on using 1000 BTU per cubic foot gas, 0.64 specific gravity, at a pressure drop of 1.0 inch equivalent water column.
- All Brass construction
- Stainless Steel Springs.



TEE HANDLE
WITH CHECK

TEE HANDLE WITH CHECK

No.	Pipe Size
5110301	1/4"
5110401	3/8"
5110501	1/2"
5110601	3/4"

LEVER HANDLE WITH CHECK

No.	Pipe Size
5110701	3/8"
5110801	1/2"
*5110901	3/4"

THESE VALVES MEET ANSI STANDARDS

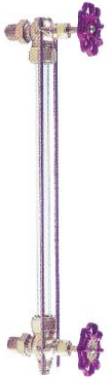
Order Toll Free: 800-428-7548

Fax: 847-689-4412



CONBRACO

Water Gauges and Liquid Level Gauges



20-100 Series
Standard
Pattern



20-200 Series
Heavy
Pattern



VNS#	Size
CI711	1/2" x 5/8"
CI712	3/4" x 3/4"

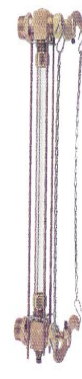
20-250 Series
Pattern Automatic



20-300 Series



20-400 Series
Left Hand
Illustrated



20-601 & 602 Series

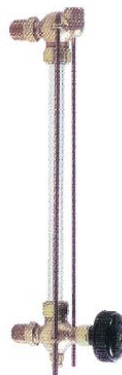
Call for Options, Pricing and Availability.



20-604 & 605 Series



20-700 Series



20-800 Series



23-450 Series
ASME
Automatic



23-600 Series



24-300 Series



24-600 Series



25-200 Series
Heavy Pattern



25-400 Series



25-500 Series
Automatic



25-600 Series

WATTS REGULATOR A.S.M.E. RATED AUTOMATIC RESEATING

**BRONZE BODY CONSTRUCTION
ASME RATED**

Z21.22 design certified by A.G.A.

Temperature relief 210°F. Standard setting 125 lbs.



40XL

No.	VNS#	Size	ASME Pressure Steam Rating BTU/hr.	AGA Temperature Steam Rating
40L-3	WR083	3/4"	777,600	180,000
40XL-5	WR087	3/4"	777,600	200,000
40L-2	WR107	1"	1,155,000	450,000
40XL-4	WR111	1"	1,155,000	500,000
140S-3	WR119	1"	1,670,000	570,000
140X-6	WR123	1"	1,670,000	670,000
N240X-6	WR131	1"	2,195,000	730,000
N241X-5	WR139	1 1/4"	2,195,000	730,000
340-3	WR147	1 1/2"	3,450,000	1,200,000
342-3	WR155	2"	3,450,000	1,200,000

OTHERS AVAILABLE - CALL!

A.S.M.E. WATER PRESSURE RELIEF VALVES



174A Series



740 Series

Bronze body relief valves for pressure protection only of all types of hot water heating boiler equipment.

BTU Steam Discharge Capacities

No.	VNS#	Size	125 lbs.
174A	WR179	3/4" x 3/4"	2,070,000
174A	WR182	1" x 1"	3,215,000
174A	WR185	1 1/2" x 1 1/2"	5,945,000
174A	WR188	1 1/2" x 1 1/2"	6,460,000
174A	WR191	2" x 2"	12,170,000

Available at additional cost, but not stocked, are pressure settings 30, 50, 75, 100 and 150 lbs. Please note: Ratings for other pressures available on request.

Iron body relief valves with expanded outlets for hot water space heating boilers. Pressure range 30 lbs.

BTU Steam Discharge Capacities

No.	VNS#	Size	30 lbs.
740	WR163	3/4" x 1"	925.00
740	WR166	1" x 1 1/4"	1,300,000
740	WR169	1 1/4" x 1 1/2"	2,105,000
740	WR172	1 1/2" x 2"	2,900,000
740	WR175	2" x 2 1/2"	5,250,000

Available at additional cost, but not stocked, are pressure settings 45, 50, and 75 lbs. Please note: Ratings for other pressures available on request.

Figure 10 CAST IRON SAFETY VALVE

For steam heating boilers with operating pressures to 15 PSIG - ASME Section IV. Figure 10 valves are ASME Code Section IV safety valves designed for industrial and commercial low pressure steam heating boilers and associated equipment. Standard pressure settings for saturated steam service are 5 through 15 psig.

Available in seven sizes ranging from 1/2" x 1" to 3" x 3", connections are male NPT screwed inlet and female NPT screwed outlet. The cast iron body is rated 15 PSIG at saturated steam temperature 250°F.



VNS#	Size
WR015	3/4" x 1"
WR016	1" x 1 1/2"
WR017	1 1/2" x 1 1/2"
WR018	1 1/2" x 2"
WR019	2" x 1 1/2"
WR020	2 1/2" x 2 1/2"
WR021	3" x 3"

Saturated steam capacities - Pounds per hour (90% rating) at 33 1/3% overpressure

Set Pressure PSIG	Valve Size Inlet x Outlet - Inches					
	1/2" x 1"	1" x 1 1/2"	1 1/2" x 1 1/2"	1 1/2" x 2"	2" x 1 1/2"	2 1/2" x 2 1/2"
* 5	230	409	639	924	1637	3698
* 10	318	565	882	1276	2260	5106
15	394	700	1093	1581	2801	6328

VACUUM RELIEF VALVE FOR WATER SERVICE



No.	VNS#	Size
N36	WR161	1/2"
N36	WR162	3/4"

Automatically vents a system if vacuum occurs. Opens at less than 1/2" vacuum. Automatic venting of a closed system to atmosphere when a vacuum is created, thereby, permitting air to enter and prevent vacuum conditions which could siphon the water from the system and burn out 3 heater or collapse a tank.

Also suitable for steam service.
Max Pressure: 15 PSI
Max Water Working Pressure: 200 PSI
Max Temperature: 250°F
Male Inlet Connection: 1/2" and 3/4"

VENTING: 1/2" No. N36 13.5 CFM
CAPACITY: 3/4" No. N36 20 CFM

WATER PRESSURE REDUCING VALVES WITH INTEGRAL STRAINER

For supply main pressure up to 300 lbs.

- Bronze body construction
- Stainless steel integral strainer
- Renewable stainless steel seat
- High temperature resisting diaphragm for hot or cold water.



U5B - 30-75 lbs.
U5B-LP - 10-35 lbs. (Low Pressure)

Size	VNS#	U5B	VNS#	U5B-LP
1/2"	WR001		WR007	
3/4"	WR002		WR008	
1"	WR003		WR009	
1 1/4"	WR004		WR010	
1 1/2"	WR005		WR011	
2"	WR006		WR012	

FLOW CAPACITIES

Series	1/2"	3/4"	1"	1 1/4"	1 1/2"	2"
No. U5B	14	18	30	50	56	92

No. U5B-LP

Chart shows flow capacities in gallons per minute based on average conditions and reduced pressure fall-off due to demand.

WATER PRESSURE REGULATOR

No. 223 Series are a dependable choice for high capacity domestic reduction service commercial, institutional, or industrial applications.

The principle difference between No. 223S and U5 series is that No. 223, Model M3, has extra large diaphragm and spring case construction, size for size. This provides a realistically high capacity reducing valve along with a separate strainer body when No. 223S is specified. Initial pressure up to 250 lbs. Reduced pressure range is 25-75 lbs. Set for 50 lbs. delivery pressure unless otherwise specified. Max Temperature 160°F.

- High Performance Capacity
- Water Pressure Reducing Valves
- With and Without Separate Strainers
- Also available: 3" flanged iron body with or without strainer



No. 223S
No. 223

Size	Body	223	223S
1/2"	Bronze		
3/4"	Bronze		
1"	Bronze		
1 1/4"	Bronze		
1 1/2"	Bronze		
2"	Bronze		
2 1/2"	Iron		

PROCESS REGULATORS (specify reduced pressure)



No. 152A

No. 152A
1/2"
3/4"
1"
1 1/4"
1 1/2"
2"

Ranges Available:
3-15#
10-50#
30-140#

They are used successfully on applications such as autoclaves, steam tables, laundry mangles, steam irons, single radiators, vulcanizers, sterilizers, and similar equipment.

No. 152 AW Series - construction is cast iron for supply pressures up to 200 lbs. Reduced pressure adjustable in various pressure ranges.

Specify outlet pressure. For oil applications specify standard 152A..

STEAM PRESSURE REDUCING VALVE

A single-seated, large capacity, remote control, diaphragm type steam reducing valve for main line and high capacity process regulation service. Also, for heating applications and suitable for dead end service. For institutional, industrial and commercial applications. Valve is simple to adjust. Reduced pressures down to 5 lbs. and up to 150 lbs. depending on size of regulator and supply pressure.

Renewable stainless steel seat is standardly furnished for either superheated or saturated steam service. Standardly furnished with bronze bodies with female screwed connections, sizes 1/2" to 3" inclusive. Also, iron bodies with flange connections, 3" and 4" 127SC. Initial pressure up to 150 lbs.

Size 1/2" through 1 1/4" standardly furnished with Composition Disc construction (127SC) unless specially required with stainless steel valve disc; if so, specify No. as 127SS. 127SS initial pressure up to 250 lbs. - When ordering please note: LINE PRESS, REG. PRESS, CAPACITY.



No.	Material	Size	Weight
127	Bronze	1/2"	22 1/2 lbs.
127	Bronze	3/4"	23 lbs.
127	Bronze	1"	23 1/2 lbs.
127	Bronze	1 1/4"	24 lbs.
127	Bronze	1 1/2"	28 lbs.
127	Bronze	2"	32 lbs.
127	Bronze	2 1/2"	34 lbs.
127	Bronze	3"	40 lbs.
127	Iron	3" (flgd)	42 lbs.
127	Iron	4" (flgd)	84 lbs.



BACKFLOW PREVENTERS



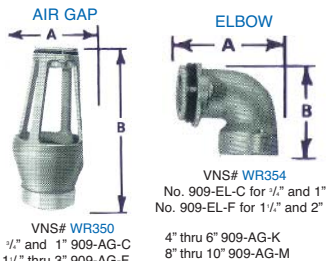
No. 909SQT (AS SHOWN)
No. 909 2 1/2" to 10" (NOT ILLUSTRATED)



BACKFLOW PREVENTOR

Reduced Pressure Principle Maximum Supply Pressure 175 lbs.
No. 909 provides superior protection in cross connection control for both cold and hot water installations. It is a unique, patented design incorporating the "air-in/water-out" principle, providing substantially improved relief valve discharge performance during the emergency conditions of combined back-siphonage and backpressure with both checks fouled. (Horizontal or vertical installation.) **Note: Meets USC Code.**

Sizes (In.)	VNS#	Strainer	Total Wt. (lbs.)
3/4"	WR290	Bronze Screwed	Bronze 18
1"	WR291	Bronze Screwed	Bronze 20
1 1/4"	WR292	Bronze Screwed	Bronze 43
1 1/2"	WR293	Bronze Screwed	Bronze 45
2"	WR294	Bronze Screwed	Bronze 53
2 1/2"	POA	Iron Flanged	Not Furnished 200
3"	POA	Iron Flanged	Not Furnished 230
4"	POA	Iron Flanged	Not Furnished 470
6"	POA	Iron Flanged	Not Furnished 800



Iron Body No.	Desc.	For No. 909, 0099 Sizes
909-AG-C	Air Gap	3/4" and 1"
909-EL-C	Elbow	3/4" and 1"
909-AG-F	Air Gap	1 1/4" thru 3"
909-EL-F	Elbow	1 1/4" thru 2"
*909-AG-K	Air Gap	4" thru 6"
*909-AG-M	Air Gap	8" thru 10"

*Epoxy coated

EXPANSION TANKS — For Hot Water Heating Systems

Max. Temperature 240°F—Max. Pressure 115 PSI

No.	Volume (gals)	*Accept. Volume (gals)	Conn. Size	Weight (lb.)
ET-15	2.1	1.4	1/2"	5
ET-30	4.7	3.0	1/2"	8
ET-60	6.6	4.3	1/2"	14



Water Pressure Reducing Valve

A direct acting, high capacity pressure reducing valve for liquid services from 1/2" to 2". The cast bronze valve is suitable for inlet pressures up to 300 psig. Easily adjustable by turning the pressure screw on top of the valve. This valve meets the A.S.S.E standards, Southern Standard plumbing code, I.A.P.M.O Military standards, and the Uniform Plumbing Code. Ranges Available: 3-15, 10-50, 30-140



TYPE D-36

Size	1/2"	3/4"	1"	1 1/4"	1 1/2"	2"
Price						

TYPE A-31 SMALL PRESSURE REGULATORS FOR WATER, AIR, LIGHT OIL

Small pressure regulator Type A-31, automatically reduces high inlet pressure to lower outlet pressure within close limits.

High quality forged brass body; good for inlet pressures up to 300 lbs.—reduced pressure ranges 2 to 180 lbs. with 6 different springs. Maximum temperature 200°F.

3/4"— TYPICAL APPLICATIONS: Drinking fountains, bubblers water coolers, humidifiers, beverage dispensers, spray paint rigs air tools, etc.



SERIES 008QT NEW



Working Temperature 33° - 180°F
Pressure Range: 8 psi to 150 psi.

- Bronze body for durability
- Standardly supplied with tee handles
- Available less tee handle with stem wrench flats, for use where space is limited
- Patented design
- Compact space saving design
- ASSE 1056
- Available in left-handed or right-handed outlet

High Hazard Backflow Preventer
Anti-Siphon, Spill-Resistant

Designed for indoor point of use applications to prevent back-siphonage of contaminated water back into potable water supply. Separation of the water supply from the air inlet is accomplished by means of a diaphragm seal. This feature protects against any spillage during start-up operation.

3/8" ... 1/2" ...



No. 7 Dual Check Backflow Preventer

Suited for use in photo developing darkrooms, exterminators equipment, kidney dialysis machines, and hospital equipment using water.

VNS# WR079 3/4"..... VNS# WR080 1"...



No. 9D Backflow Preventer Continuous Pressure Type with Intermediate Atmospheric Vent

Suited for laboratory equipment, processing tanks, sterilizers, dairy equipment, and particularly for boiler feed lines.

VNS# WR077 1/2"..... VNS# WR078 3/4"...

HOT OR COLD WATER ANTI-SIPHON VACUUM BREAKERS



No. 288 A
SERIES
PIPE THREAD

SIZE	VNS#
3/8"	WR051
3/8" CP	WR061
1/2"	WR052
1/2" CP	WR062
3/4"	WR053
3/4" CP	WR063
1"	WR054
1" CP	WR064
1 1/4"	WR065
1 1/2"	WR056
2	WR057
3	WR059

No. 8
Hose
Thread



VNS#
WR065-No. 8 Brass
WR066-No. 8 Chrome
WR067-No. 8 NF Brass
(NF = No-Freeze)

SUPPLY AIR REGULATOR

Precision high capacity balanced piston ring air line regulators. Reduced pressure ranges 0-250. Maximum of initial pressure 300 lbs.



ALWAYS IN STOCK	
SIZE	VNS#
1/4"	MP001
3/8"	MP002
1/2"	MP003



Pressure Regulating Valve

A direct acting pressure reducing valve for steam, water or gas service in sizes from 1/2" to 2". The cast iron valve is suitable for inlet pressures up to 200psig and the stainless steel is suitable for inlet pressures up to 300psig. Easily adjustable by turning the pressure screw on top of the valve.

SPECIFY OUTLET PRESSURE

	1/2"	3/4"	1"	1 1/4"	1 1/2"	2"
Iron						
Bronze						



TYPE D-50

K-10, K-20 PISTON TYPE BACK PRESSURE VALVE

To limit a specific pump discharge pressure on a machine tool hydraulic system, oil burning equipment, rams, presses, lifts, etc. For water, other liquids and fuel oils of all grades. Not for steam. Bronze angle body, stainless trim, single metal-to-metal seat only. Relief pressure ranges 5 to 600 lbs. Maximum temperature 450°F. Type K-20 version available—uses an aspirating action to obtain even closer pressure control.

Type	Size	Stand. Valve	Ship. Wt. Ea.
K-10	1/4" or 3/4"	Stand. Valve	1 1/4 lbs.
K-10	1/2" or 3/4"	Stand. Valve	4 lbs.
K-10	1" or 1 1/4"	Stand. Valve	8 1/2 lbs.



HEAT EXCHANGERS & REPLACEMENT TUBE BUNDLES

WHEN ORDERING PLEASE SPECIFY MFG #, SERIAL #, AND CATALOG #

Adamson • American Standard
 Armstrong • Bell & Gossett
 Cemline • Graham
 Old Dominion
 Patterson - Kelly
 Reco • A.O. Smith • Taco
 Thrush • Whitlock

HEAT EXCHANGERS

Remove heads and clean all tubes straight through with a wire brush or drill. Acids or chemicals are not required. Max. steam pressure in shell — 50 P.S.I. Max. water pressure — 125 P.S.I. Max. temperature — 350°F



B&G and Armstrong Tank and Heater



B&G "SU" Armstrong WS Heat Exchanger



TCW, TCS and TCY Tank Heaters

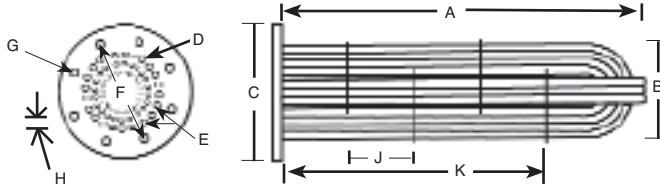


Thrush A.S.M.E. Heat Exchangers

Tube Bundle Replacement

ITT Bell & Gossett will manufacture a replacement tube bundle assembly for a tank heater of another manufacturer's design at the maximum allowable pressure and temperature based on the data given below. The tubesheet will be of conventional design and the tube supports will be spaced as per B&G standard unless otherwise indicated.

The tube bundle will be constructed according to ASME requirements for the pressures and temperatures given below. The ASME "U" symbol will be stamped on each tube bundle.



- A. Tube bundle length
- B. Tube bundle diameter
- C. Tube sheet diameter
- Tube sheet thickness
- D. Outside diameter of tubes
- Inside diameter of tubes or
- gauge
- E. Total number of tube holes
- Tube layout (triangular or square)
- Tube pitch (center to center of tube holes)
- Number of tubeside passes (2, 4 or 6)
- Are there tube holes on vertical C/L of tubesheet?
- Are there tube holes on horizontal C/L of tubesheet?

IF TUBESHEET HAS BOLT HOLES:

- F. Bolt circle diameter
- G. Number of bolt holes
- H. Bolt hole diameter
- I. Do bolt holes straddle Vert. & Horiz. C/L of tubesheet as shown on drawing?
- Tube support (baffle) spacing
- J. Total number of tube supports (baffles)
- Tube support (baffle) thickness
- Tube support (baffle) diameter
- Distance to last tube support (baffle)
- K. Distance to first tube support (baffle)
- L. Collar or shell material
- M. Collar or shell outside diameter
- Collar or shell inside diameter
- Materials of construction:
- N. Tube Material _____ Tubesheet material _____
- Baffle Material _____ Head material _____ ASME REQ'D?
- Working pressures: Shell _____ PSI Tubes _____ PSI Yes No
- Manufacturer's existing unit:
- Model Number _____ Factory Number _____
- National Board Number _____
- Application: Steam in shell Water in Shell
- O. Steam in tubes, bundle in tank
- Water in tubes, bundle in tank

**NOW AVAILABLE
 CUSTOM VNS TUBE
 BUNDLE**

• Features include
 improved baffle
 & thicker wall tube
CALL FOR QUOTE!



FAN COIL UNITS
Heating & Cooling
 3 Speed Continuous fan is standard on all units.

International fan coil units ship complete from the factory with a 3 row/1 row split coil. These units can be used in 4 pipe heating/cooling systems, 2 pipe heating/cooling systems, 2 pipe heating only systems, or 2 pipe cooling only systems. Please consult with our product specialists for other arrangements not shown.



CFM
300
400
600
800
1000
1200

Ceiling Hideaway - Model CHY



CFM
300
400
600
800
1000
1200

Ceiling Hideaway with Plenum - Model CPY

Hot Water Units Ship in 1 Week!



Ceiling Exposed - Model CXB

CFM
300
400
600
800
1000
1200

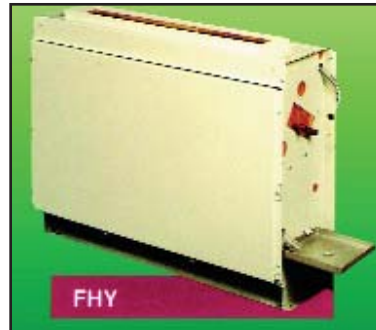
COMPLETE FAN COIL UNITS

- No kits
- No field assembly required
- Factory installed accessories



Floor Exposed - Model FXY

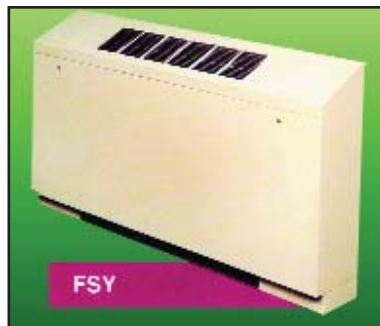
CFM
200
300
400
600
800
1000
1200



Floor Hideaway - Model FHY

CFM
200
300
400
600
800
1000
1200

Auxillary Electric Heater and wall mount controls available for an extra charge.



Floor Exposed with Slope Top - Model FSY

CFM
200
300
400
600
800
1000
1200

ISOLATION VALVE PACKAGES AVAILABLE

- Hand Valves
- 2-Way Electric
- 3-Way Electric

PLEASE SPECIFY:

- Hot water or Steam
- 2 Pipe or 4 Pipe System
- Left hand or Right hand Connections
- CFM Requirement

- Floor or Ceiling Mount
- Exposed or Concealed
- Dimensions of Installation space
- HEAT only, COOL only, or HEAT & COOL



1510 Stock Series



Series 1535



Series 1531



Series 1522



Series 80 In-Line Pump



Series 1531



To size your pump, please provide the following:

- Model # of ID plate
- Horsepower
- RPM
- Voltage and Phase
- Pipe size inlet and outlet
- Base mounted or close coupled
- GPM and FT of head
- Fluid being pumped
- Bronze or iron
- Casting # off volute
- Serial #



75-150, PR, HV, PD Series

3-Piece Oil-Lubricated Booster Pumps

Powerful Bell & Gossett motor provides years of trouble-free service.

- Sleeve bearing, oil lubricated motor has replaceable resilient motor mounts
- Unique spring design coupler for quiet operation
- Mechanical seal designed to withstand wide range of water temperatures, pressures, additives and dissolved solids
- Long bronze sleeve bearings maintain exact shaft alignment, provide constant circulation of oil over bearing surfaces, 115 volt, 1 phase



Series 3530



Series CT



Series 90

Wet Rotor Circulator Pump

Highest starting torque in the industry!

- DuraGlide™ Bearing System assures whisper-quiet, maintenance-free operation-eliminates seasonal freeze-ups
- High-efficiency closed impeller design
- Carbon bearings, diamond-like ceramic shaft and generous clearances for more resistance to lime, chloride and oxide build-up
- self-cleaning particle shield protects shaft and bearings from system start-up debris



Series 100NFI

Gallons Per Minute (GPM)								Best Efficiency	
VNS#	3GPM	5GPM	8GPM	10GPM	15GPM	18GPM	20GPM	GPM @ Head Fit	
HP	Pump Body	Full-Load AMPS	Face To Face (IN.)	Dimensions (In) W L		Inlet & Outlet	B & G Model	VNS#	Ship Wt
1/25	Cast Iron	1.75	6 3/8	4 7/8	5 5/8	Flanged(*)	NRF-22	BG010	9.5

(*) Use 3/4, 1, 1 1/4, 1 1/2" flanges sold separately. Gaskets, nuts and bolts supplied.

Circulating Pump Coupler

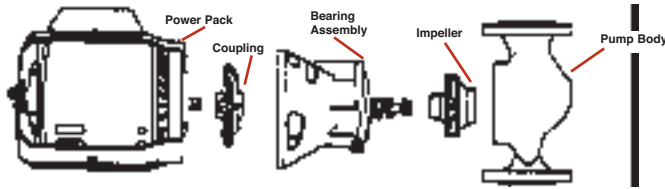
Fits Pump	Size	Shaft Material	Coupling	Manufacturer's Cross Reference		
			Bell & Gossett	Armstrong	VNS#	Ship Wt
4RD16, 4RD17	1/2" x 1/2"	Steel	189110	806026-002	BG581	0.2
4RC93	Heavier Version	Cast Steel	118705		BG578	0.2



NRF-22

BELL & GOSSET ITT
FLUID HANDLING DIVISION

**B & G BOOSTERS
REPLACEMENT PARTS**



		IMPELLERS	
	VNS#	Series 100 Booster	
189132	BG685	P3500S-0311Z	
118431	BG651	PB4Z-335	
118435	BG654	1 1/4", 1 1/2", 2" and HV Old Series (Before 1950) PB2Z-635	
118436	BG655	1", 1 1/4", 1 1/2", 2" and HV after 1950 PB2Z-835	
118440	BG657	PB4Z-1235 2 1/2" & LD 3"	
118439	BG656	PB3Z-1235 HD 3"	
BEARINGS ASSEMBLIES			
IRON			
118844	BG537	PAZ-3351	
185012	BG539	1510 Series	
186865	BG550	Series 60/1522	
189105	BG557	P3Z-12351, PB4Z-12351 (189106)	
186863	BG548	PD2Z-12351-118478, 118480 (186864)	
185260	BG544	PD26Z-12351	
BRONZE			
189034	BG551	PB1Z-3351	
189163	BG563	P10Z-435, 189103, 189102, 189101	
189162	BG562	189100, 189104	
189166	BG565	189136	
185262	BG546	PD27Z-12351	
189165	BG564	2" BNFI, HVBNFI, 189120, 189122	
186660	BG547	PHD2Z-12351 Universal	
185011	BG538	PWBZF-526 1510	
185014	BG541	PB3Z-626 1510	
BOOSTER MOTORS			
111034	BG733	(P115Z-3) 1/12 H.P.	
111031	BG734	(P115Z-4) (111036) 1/6 H.P.	
111040	BG735	P115Z-10 1/4 H.P.	
111044	BG738	1/2 H.P.	
BOOSTER SEALS			
118681	BG818	#7 Seal-Booster Seal	
186499	BG820	#2 Seal-Booster Seal	
168862	BG825	#1 Seal 1510 or Universal	
186543	BG821	#8 Seal 1510 or Universal	
COUPLERS			
118473	BG576	(PDZ-12291)	
118705	BG578	(PZ-4291)	
118708	BG579	(P2Z-4291)	
118709	BG580	(P4Z-4291)	
118723	BG582	(P115Z-12)	
MISC. B & G ITEMS			
L23401	BG801	Oil Tube Pump Lub.	
118223	BG794	1 Set Motor Mounts	
118228	BG796	1 Set Motor Mounts	

**Line of Standard Relief,
Reducing and
Self-filling Valves**

Dual Unit Valve 1/2"

Reducing Valve Set @ 12 PSIG
And Relief Valve Set @ 30 PSIG

8 VNS# BG187	*110199	
8TU	*110200	



Dual Unit Valves—With Fast Fill Feature

Reducing Valve Set @ 12 PSIG And Relief Valve Set at 30#

F-3	VNS# BG188	Brass	*110197
F-3TU		Brass	*110198
F-8		Iron	*110201
F-8TU		Iron	*110202

30 PSIG A.S.M.E. Relief Valves

790	790,000 BTU/HR	BG394	3/4"
1170	1,700,000 BTU/HR	BG402	1"
3301	3,301,000 BTU/HR	BG409	1 1/2"
4100	4,100,000 BTU/HR	BG413	2"



Pressure Reducing Valves

Set @ 45 PSIG High Pressure

1/2 NPT 6	BG376	*110194
3/4 NPT 7	BG377	*110194

Pressure Reducing Valves

Set @ 12 PSIG High Pressure

1/2 NPT B-38	BG383	*110190
1/2 NPT B-38TU	BG386	*110191
3/4 NPT B-7-12	BG384	*110196



Pressure Reducing Valves

With Fast Fill Feature—Set @ 12 PSIG

1/2 NPT	FB-38	*110190
	FB-38TU	*110193



Air Valves For Hot Water Heatings Systems



No. 7 Automatic Air Vent
1/8" 75# Female VNS#...**MO007**

No. 67 Automatic
Air Eliminator
1/8" 35# Male VNS#...**MO067**

17 Sr. Automatic Hot
Water Air Valves
1/8" 30# Male VNS#...**BG001**



B & G AIRTROL®

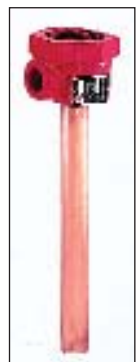
B & G Airtrol® Systems properly control air in closed hydronic systems of all sizes. Prevent accumulation of air; prevent noise caused by entrained air in piping.

**AIRTROL® FITTINGS
TANK FITTINGS**

Model No.	VNS#	Part No.
ATF-9	BG192	*112008
ATF-12	BG193	*112010
ATF-16	BG194	*112011
ATF-20	BG195	*112026
ATF-24	BG196	*112013
ATFL	BG197	*112014



Airtrol Tank Fitting



Airtrol Boiler Fitting

IAS In-Line Air Separators

Model No.	Part No.	Size Inches
IAS-1	*112095	1"
IAS-1 1/4	*112096	1 1/4"
IAS-1 1/2	*112097	1 1/2"
IAS-2	*112098	2"
IAS-2 1/2	*112099	2 1/2"
IAS-3	*112100	3"

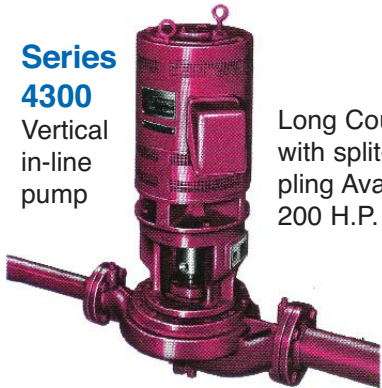


Armstrong Pumps

A.S.M.E. Heat exchangers Shell & U-Tube

Series 4300

Vertical in-line pump



Long Coupled pump with split-type coupling Available to 200 H.P.



Booster replacement parts interchange with B & G pumps.



"W" Series

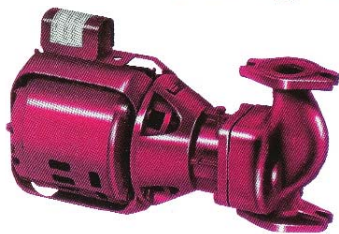
Water in shell, water in tubes Specify: GPM of medium to be heated, inlet temp. and outlet temp. desired, steam pressure available. Please give all name plate information accurately to avoid any error in ordering.

Series 4260

Max. Capacity 160 GPM. 115 Ft. Hd.

Series 4280

Max. Capacity 2100 GPM. 650 Ft. Hd. Motor Mounted self-venting pump, center-line discharge.



Series H&S Alternate for B&G 100 Series Pumps

Horizontal in-line circulators 175 RPM 60HZ. Single and three phase. Bronze fitted includes brass or bronze impeller.



Series 4030

Max. Capacity 2100 GPM. 650 Ft. Hd. Numerous sizes to meet specific pumping services. Base-mounted self venting pumps, center line dis-



GRUNDFOS

Circulators

Iron With Flanges

A 3-Speed Motor

Diamond-Hard Ceramic Bearings

Direct-Drive to



Enlarged Stainless Steel Bearing Plate

Model	Speed	HP	RPM	Volts
UPS 15-42 F 3 Speed	3	1/25	2475	115
UPS 26-64 F 1 Speed	1	1/12	2650	115
UPS 26-96 F High Head	1	1/12	2450	115
UPS 43-75 F High Capacity	1	1/6	3150	115

* Must Know Flange Size*

Applications:

Grundfos circulators are single-stage, direct-drive centrifugal pumps. The wet rotor design eliminates the need for routine maintenance and lubrication. Available with cast iron, stainless steel and bronze volutes, Grundfos circulators are designed for domestic and light commercial applications in open and closed systems. These pumps can be operated

up to system pressures of up to 142 psi with maximum fluid temperatures of 230°F and corresponding ambient temperatures of 68°F. Mixtures of water and ethylene or propylene glycol solution up to 50% by volume may also be pumped. For information regarding the suitability of pumping other fluids, please call Vierk.

The replacement for "THE BOSS" series stainless steel sewage pumps. Liquid cooled, automatic thermal protection and restart system. This is the highest quality pump you can buy!

With 10 Foot Cord
VNS# AP12-10

With 25 Foot Cord
VNS# AP12-25

Applications:

- Basement Sumps
- Dewatering
- Water Transfer

Specifications:

- 1/2HP, 115Volt, 1-phase
- Capacity to 78 GPM
- Head to 33 feet
- Discharge size 1-1/2" female NPT
- Power Cord 10' or 25'
- Solids 7/16" maximum

Features & Benefits:

- Lightweight
- Corrosion Resistant
- Manual or automatic operation
- Field replaceable power cord
- Continuous duty when fully submerged
- Fluid Temp. Range: 32°F (0°C) min. 131°F (55°C) max.
- Minimum pumping level 1-3/8"

Agency Listing:

- UL Listed
- Canadian Standard Association

Materials of Construction:

- Stainless Steel



Performance in Gallons Per Minute	AP						
	12	72	64	55	43	31	15
TDH	5	10	15	20	25	30	

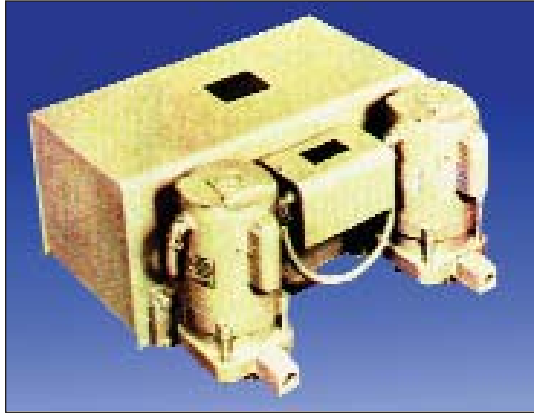
HOFFMAN ITT
FLUID HANDLING DIVISION

**CENTRIFUGAL TYPE
WATCHMAN CONDENSATE PUMPS**

For systems up to 12,000 sq. ft. E.D.R.

Cast iron receivers, bronze fitted centrifugal pumps with stainless steel shafts, one piece bronze impellers, heavy duty float switch and 1/3 HP, 115/230V, 1 ph.(only), 3450 RPM motors with thermal overload protection. 2" Inlet, 3/4" Discharge.

DUPLEX PUMP



WCD-12-20B (15 G.P.M. @ 20PSI)
Duplex Unit W 14 Gal. Receiver Mechanical Alternator
Shipping Wt: 270 lbs. [VNS#...HS004](#)

WCSD-12-20B (same as above
but furnished with a steel receiver)
Shipping Wt: 190 lbs. [VNS#...HSZ1220](#)

No. 180001
Pump & Motor Assembly
[VNS# HS054...](#)

No. DA0393 Float Switch
[VNS# APH001...](#)

No. 180013 Seal Kit
[VNS#HS055...](#)

SINGLE PUMP



WC8-20B (12 G.P.M.)
Single Pump Unit w/ 9 gal. Receiver
Shipping Wt: 170 lbs. [VNS#...HS002](#)

WCS8-20B (same as above
but furnished with a steel receiver)
Shipping Wt: 130 lbs. [VNS#...HSZ820B](#)



DUPLEX UNIT

Model 4128-GD 22.5 GPM @ 20psi
Duplex Unit 15 gallon steel receiver
8,000 sq. ft. EDR 1/3 HP-3500 RPM-115/230 volt
Mechanical Alternator
Shipping Weight: 185 lbs. [VNS# SI011...](#)

Model 41215-GD 22.5 GPM @ 20psi
Duplex Unit 30 gallon steel receiver
15,000 sq. ft. EDR 1/2 HP-3500 RPM-115/230 volt
Mechanical Alternator
Shipping Weight: 235 lbs. [VNS# SI012...](#)



**CONDENSATE
PUMPS**

with Heavy Gauge Steel Receivers

ALWAYS IN STOCK

Compact, neat appearance, simplicity, and efficiency describe the Sterlco line of condensate pumps. The 4100 series condensate pumps are designed expressly for condensate return in low pressure heating systems. These units can deliver their full rated power for long periods without damage or overheating. The efficient operating characteristics of the centrifugal impellers assure the motor will never be seriously overloaded even though pumping against a minimum discharge pressure. Float switches are easily adjustable for conversion of large units down to smaller ratings.

Float Switch APH001.....
Seal SIZ0810003400.....
Body Gasket SIZ5450000100.....



SIMPLEX UNIT

Model 4128-G 12 GPM @ 20psi
Simplex Unit 15 gallon steel receiver
8,000 sq. ft. EDR 1/3 HP-3500 RPM-115/230 volt
Mechanical Alternator
Shipping Weight: 120 lbs. [VNS# SI001...](#)

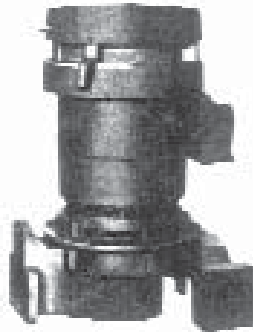
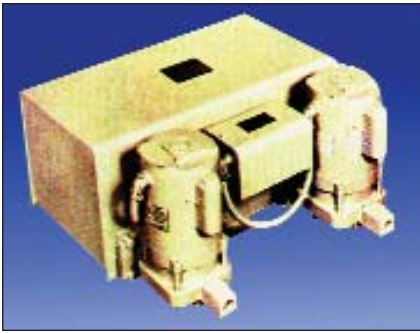
Model 41215-G 22.5 GPM @ 20psi
Simplex Unit 30 gallon steel receiver
15,000 sq. ft. EDR 1/2 HP-3500 RPM-115/230 volt
Mechanical Alternator
Shipping Weight: 200 lbs. [VNS# SI002...](#)



**CONDENSATE PUMPS,
GENERAL PURPOSE PUMPS AND
REPLACEMENT PARTS**

PRICED ON APPLICATION

HOFFMAN

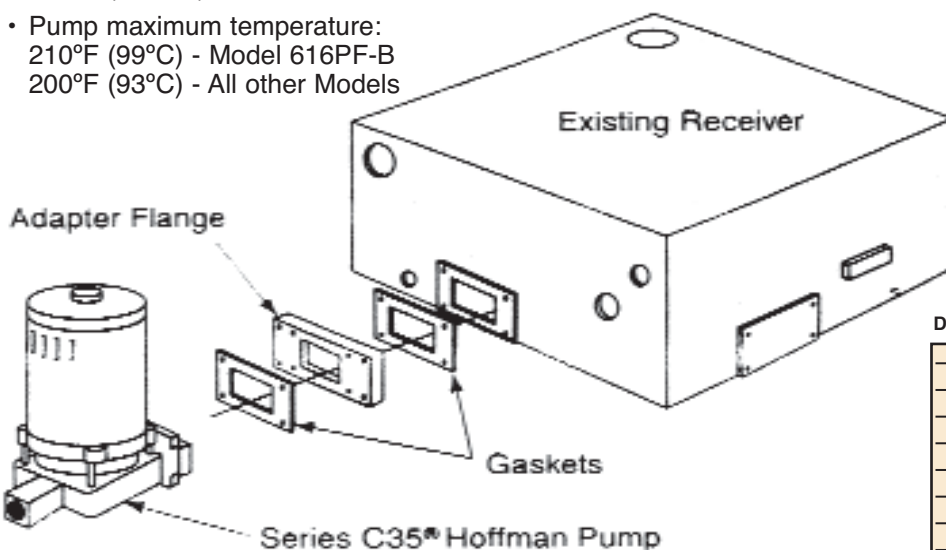


Pumps (Stock)

Centriflo® Series C35® Centrifugal Pumps

Hoffman Centriflo® Series C35 Centrifugal Pumps are designed for use on condensate and boiler feed units. They can also be used with our Adapter Flange Kit to replace pumps on other manufacturer's condensate units.

- Vertical mounting design conserves floor space and protects motor
- Low NPSH required-only 2' (610mm) NPSH for Model 616PF-B
- Precision balanced bronze impeller for vibration free operation
- Bronze case wear rings protects casing from wear
- Water slinger protects motor from water
- Heavy duty ball bearing 3500 RPM motor
- Maximum discharge pressure 40 psi (276 kPa)*
- Maximum capacity 30 GPM (6840 LPS)*
- Pump seal maximum temperature 250°F (121 °C)
- Pump maximum temperature: 210°F (99°C) - Model 616PF-B
200°F (93°C) - All other Models



Dimensions, in. (mm)

Pump Model	A	B	C
609PF	9 1/16 (230)	- (-)	- (-)
616PF	4 3/4 (121)	5 1/4 (133)	6 (152)
617PF†	4 3/4 (121)	9 1/16 (230)	6 (152)
616PF-B	9 1/16 (230)	- (-)	- (-)

† Includes orifice mounted on pump discharge

Ordering Information

Model Number	Part Number	Pressure Psig (kPa)	Capacity GPM (LPS)	Motor	Impeller Diameter In. (mm)	VIP Part #
609PF	180001*	20 (138)	18 (1.1)	1/3 HP 1 PHASE, 60HZ 115/230 VOLT	3 11/16 (93)	HS054
609PF	180025	20 (138)	18 (1.1)	1/3 HP 3 PHASE, 60HZ 208-230/460 VOLT	3 11/16 (93)	CALL
616PF	180029	20 (138)	30 (1.9)	1/2 HP 1 PHASE, 60HZ 115/230 VOLT	3 3/16 (81)	CALL
616PF	180026	30 (207)	17 (1.1)	3/4 HP 3 PHASE, 60HZ 208-230/460 VOLT	4 3/8 (86)	CALL
616PF	180027	30 (207)	30 (1.9)	1 HP 1 PHASE, 60HZ 115/230 VOLT	4 7/16 (113)	CALL
617PF	180028	40 (276)	17 (1.1)	1 HP 3 PHASE, 60HZ 208-230/460 VOLT	4 7/8 (124)	CALL
616PF-B (NPSH Pump)	2' 180030	30 (207)	30 (1.9)	1 HP 3 PHASE, 60HZ 208-230/460 VOLT	4 1/4 (102)	CALL

*Always in stock Item

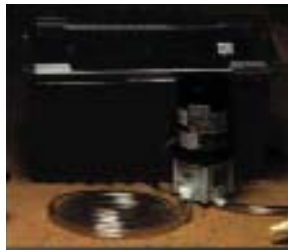
Pump Adapter Flange Kit (Stock)

Our adapter flange kits enable you to install a Hoffman Centriflo® Series C35® Pump as a direct replacement on other manufacturer's condensate units.

- Kit includes adapter flange, gaskets, and bolts
- Drilled and tapped adapter flange makes installation easy

Dimensions, in. (mm)

Part #	Manufacturer	X	Y
180035	Aurora	6 1/4 (159)	3 1/4 (83)
180037	Economy	4 1/4 (113)	4 (102)
180036	Federal	6 1/4 (159)	3 1/2 (89)
180032	Mepco	3 1/4 (86)	3 1/4 (83)
180034	Skidmore	4 1/4 (113)	4 1/4 (108)
180031	Sterling	3 3/4 (95)	3 3/4 (95)
180033	Weinman	4 1/4 (113)	4 1/4 (108)



GKPK-SC

The Coil Cleaning Kit consists of a 5 gallon polyethylene tank with cover and baffle. A little Giant 2-MD-SC magnet-driven pump with mounting bracket. 18" length of 1/2" I.D. Tygon tubing. 10' length of 1/2" I.D. vinyl tubing, filter material and 5 clamps.

562660

The Little Giant Coil Cleaning Kit is a fast, inexpensive, effective method for "boiling out" coils. Perfect for steam converters, burnouts, shell and tube heat exchangers, water heaters, and oil supply lines to fuel oil heaters. Used with coil cleaning acids



Double Viton Seal Acid Pump

Nylon front with 3/8" female NPT intake. Adapter included for 1/2" O.D. intake. 1/4" male NPT discharge. Stainless steel shaft and back plate. 6', 3-conductor cord with 3 prong molded plug. **U.L. Listed.**

502303

\$109.62

2E-NDVR 115V.

Ft. of Head	1'	3'	5'	7'
G.P.H.	250	217	180	145

PLEASE NOTE:

The 2E-NDVR Pump will operate only with flooded suction line. Pump must be below liquid level.

Big John Automatic Sump Pumps



- Submersible cast iron housing.
- Diaphragm operating switch.
- Non-clog pumping head.
- Screened intake.
- 6-CIA & 8 CIA2 — 1 1/2" discharge.
- 10-CIA & 12 CBA — 1 1/2" discharge.
- ***12 CBA cast bronze housing and bronze screened intake.

Specifications

Model No.	HP	Gallons Per Hour				Shut Off (ft)	PSI	Wt. Lbs.
		5'	10'	15'	20'			
6-CIA	3/10	2750	1750	750	—	18	7.8	18 1/2
8-CIA	4/10	3250	2500	1550	450	22.9	9.9	19
10-CIA	1/2	4200	3800	2700	1825	23	10	38
***12-CBA	1/2	5000	4000	3000	2000	26	11.3	38 1/2

Water Wizard



505000

- **Lightweight**
 - **Compact**
 - **A True Little Giant**
- The new Little Giant Water Wizard, **Model No. 5-MSP** is completely portable and easy to use. Just attach a garden hose or 1" pipe, set the pump into water at least 3/4" deep, and plug into a grounded 120 volt AC outlet. The Water Wizard will remove water to within 1/8" of floor. Equipped with 8 ft cord with 3-prong grounded plug. Maximum pumping height 26.3 ft. Thermally protected . H. 7 3/4" x W. 5 1/8" x L 6 1/8". GARDEN HOSE ADAPTER FREE. **5-MSP-25** Same as above but furnished with 25' cord.

Model No.	HP	Gallons Per Minute (GPM)			
		5'	10'	15'	20'
505000	1'	20.4	19	16	13
505025	5'				8



Model NK-1 (210 GPH) Designed for use in mild acids, alkalis, hard water applications, and where copper/fluid are in contact. Has glass-filled, corrosion-resistant nylon housing. Thermally protected. **526003 NK-1**

Model NK-2 (325 GPH) Same as above, with larger motor. **527003**

Little Giant®

Non-Submersible Magnet-Driven Chemical Pump



Polypropylene pumping head, 1/2" female NPT intake, 1/2" male NPT discharge. Overload protector, 6', 3-conductor cord with 3 prong plug. Fan cooled motor— sleeve bearings. Titanium shaft standard. ***N.S.F. Approved 580002**

U.L. Component Recognized

2-MD 115 V.

Ft. of Head	1'	3'	6'	9'
G.P.H.	420	400	340	250



Polypropylene pumping head, 1/2" female NPT intake, 1/2" male NPT discharge. Overload protector, 6', 3-conductor cord with 3 prong plug. Fan cooled motor— ball bearings. Standard with Titanium shaft and thrust washers, and with Buna-N O-Ring. ***N.S.F. Approved 581002**

U.L. Component Recognized

3-MD 115 V.

Ft. of Head	1'	3'	6'	9'	16'
G.P.H.	420	400	340	250	125

Drainosaur Water Removal System Model WRS-6



Removes water from laundry trays, sinks, etc. where gravity drainage is impractical.

Includes 5-gallon polypropylene tank. Tank lid has 1/2" FNPT side intake port, 1/4" FNPT top discharge port, and 2" FNPT top vent port. Easy-to-remove filter trap.

Also includes .3 HP automatic, submersible sump pump with 8' power cord and 3 prong grounded plug; 1/2" MNPT to 1/4" FNPT adapter; and 1 1/4" pipe from pump to lid.

506055 115 V.

Performance (GPH @ Head)

Model No.	HP	AMP/Watt	GPH @ Head				Shut Off (Ft.)	PSI	Shut Wght. (Lbs.)	Dimensions (H x L x W) (In.)
			5'	10'	15'	20'				
WRS-6	.3	9/720	2750	1750	750	18	7.8	23	16 x 14 1/2 (D)	

Sewage/Effluent Pumps



The all new Eliminator submersible pumps from Little Giant are specifically engineered to handle the tough demanding tasks of effluent and sewage waste transfer with high efficiency and long term dependability.

The Eliminators — USA Series — include pumps for use in residential, commercial, industrial and agricultural applications with light to medium transfer demands. For dewatering, effluent waste, waste-water and sewage handling

where such materials must be moved upward from a collection area to sewer or septic lines, or drainage areas, the Eliminators are an ideal solution.

Performance (GPM @ Head)

Model No.	HP	GPM @ Head				Weight (Lbs.)
		5'	10'	15'	20'	
8E-CIA-RFS	1/3	52	45	33	—	29
9E-CIA-RFS	4/10	57	53	40	30	33
9S-CIA-RFS	4/10	80	57	24	—	36

Pulsafeeder Chemical Metering Pumps

CHEMICAL METERING PUMPS

For Heavy-Duty Industrial Processing and Water Treatment Applications.

- Cooling Tower Treatment
- Metal Finishing-brighteners
- Boiler Feed-scale Control
- Processing Systems
- Industrial Water Treatment
- Chlorination-acid Feed
- Swimming Pool Treatment
- Detergent Feed-rinse Aid
- Feed to Irrigation Systems
- Livestock Feed Additives

PULSAtron electronic metering pumps feature a 100:1 turndown ratio dual adjustment for versatile metering over a wide range of flow rates and pressures. Constant flow over rated pressure, guided ball check valve system, leak free sealless liquid ends and enclosure make the PULSAtron an excellent option for a wide range of applications. Choose between the full featured Series E Plus or the economical Series A

PULSAtron
Electronic Metering Pumps
Series E Plus



Excellent for Boiler Chemical Feed

Series E PLUS Key Features

- 4-20mADC Direct and Stop inputs or External Pacing and Stop inputs are available.
- Auto-Off-Manual switch
- Highly reliable digital timing circuit
- EMI protection
- Thermally protected solenoid with fd auto reset
- Panel mounted circuit breaker
- Indicator lights
- Bleed valve assembly
- 115V AC/50-60 Hz (1Ph.)
- U.L. Approved for Outdoor Applications

Model No.	Pressure PSI. Max	Capacity GPH	Max GPD
LPB2SA-PTC1		0.20	5
LPD3SA-PTC1		0.45	11
LPF4SA-PTC1	250	0.83	20
LPH4SA-PTC1		1.66	40
LPA2SA-PTC1		0.25	6
LPB3SA-PTC1		0.50	12
LPD4SA-PTC1	150	0.87	21
LPG4SA-PTC1		1.75	42
LPH5SA-PTC1		3.12	75
LPA3SA-PTC1		0.50	12
LPB4SA-PTC1		0.91	22
LPF4SA-PTC1	100	1.83	44
LPG5SA-PTC1		3.33	80
LPH6SA-PTC1		5.0	120
LPH7SA-PTC1	35	10.0	240

KOPkits®

Keep-ON-Pumping kits that can save you time and money.

When you need a part, you've got it! A KOPkit can help you cut downtime and put you back in business fast. Use KOPkits also for preventive maintenance, to ensure continuous high performance from your Pulsafeeder metering pump.

Save money too, by buying parts in KOPkits instead of ordering individual parts.

KOPkits are available for the CHEM-TECH Series 100 and Series 200, MEC-O-MATIC Dolphin Series, and all PULSAtron metering pumps.



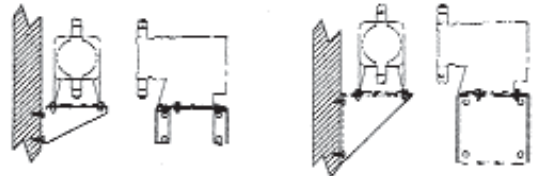
WALL MOUNTING BRACKET

The rugged stainless steel and plastic Pulsafeeder wall mounting brackets provide easy, secure installation of the metering pump in a variety of environments. The bracket is engineered to accept most PULSAtron® metering pumps and all models of the CHEM-TECH Series 100.

TYPICAL INSTALLATION of WALL BRACKET

Stainless Steel

Plastic



NOTE: It is the manufacturer's recommendation that the bracket be used to wall mount applications. Contact the factory concerning other mounting considerations. It is also recommended that suction lift be kept to a minimum and should be a consideration in choosing shelf mount loca-

TSF System

7 1/2 gallon polypropylene container mounted on a solid base equipped with Barracuda Series Feeder

Model	Ship Wt. #
W/SR-105	27
W/SR-110	27
W/SR-125	29
W/SR-175	29

Voltage: 120-V, 60 Hz
Dimensions: H-13 5/8; W-22 1/8; D-14 5/8



Myer



VNS# **MY001**
Model MCSP
55 GPM 18 ft. hd.
115/60/1750 RPM
Overload Protected
1 1/4" Discharge Outlet

**SUMP PUMP
CHECK VALVE ONLY**

1 1/4"
1 1/2"
2"

Little Giant®

High Temperature Effluent Pumps



HT-6E-CIA-FS Automatic 506600 15' power cord.

1/3 HP. Handles liquid with solids up to 1/2" spherical. Integral float switch for automatic on/off. "On" level is 11"-14"; "off" level is 3"-6".

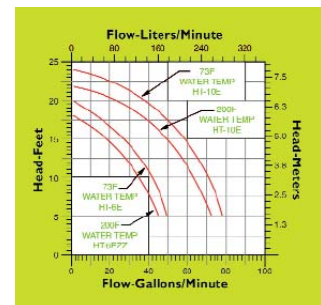
VNS# **LG700**.....

APPLICATIONS

- Boiler blowdown pits
- Plant washdown pits
- Public utility underground
- Transformer vaults
- Industrial steam cleaning pits

FEATURES

- Handles liquid up to 200°F
- Cast Iron Pump housing and volutes
- Nylon vortex impeller and base
- 1 1/2" FNPT discharge



EXPANSION JOINTS & FLEXIBLE PUMP CONNECTORS

EXPANSION COMPENSATORS



Size	Model	VNS#	OAL
3/4"	H-075-MMT	FL001	11 ¹⁵ / ₁₆ "
1"	H-100-MMT	FL002	11 ¹⁵ / ₁₆ "
1 1/4"	H-125-MMT	FL003	14 ¹ / ₁₆ "
1 1/2"	H-150-MMT	FL004	14 ¹ / ₁₆ "
2"	H-200-MMT	FL005	14 ¹ / ₁₆ "
2 1/2"	H-250-MMT	FL006	15 ⁷ / ₁₆ "
3"	H-300-MMT	FL007	15 ⁷ / ₁₆ "
4"	H-400-MMT	FL008	—

Bellows: 2 ply stainless steel
 Stroke: 1 3/4" compression, 1/4" extension; total 2"
 Maximum operating temperature: 750°F
 Maximum working pressure: 175 PSI
 Units also available in flanged, female, female X male, and sweat ends

THREADED FLEXIBLE CONNECTORS

12", 18" & 24" length in stock for immediate delivery.
 Stainless steel hose and braid, carbon steel male pipe thread ends; pressure rated to 150#.



Size	VNS#	12" Length	VNS#	18" Length	VNS#	24" Length
1/2"	AF007		AF011		AF013	
3/4"	AF057		AF061		AF063	
1"	AF107		AF111		AF113	
1 1/4"	AF157		AF161		AF163	
1 1/2"	AF207		AF211		AF213	
2"	AF257		AF261		AF263	
2 1/2"	AF307		AF311		AF312	
3"	AF357		AF361		AF363	

CUSTOM SIZES AVAILABLE

Units also available in flanged, female, female X male, sweat ends; in brass, stainless steel, carbon steel; built to order.

Aall Flex
Hyspan
Mercer
 (many others available)

Flexonics
Metraflex
Zurn

Units are available in virtually any configuration to meet your requirements.



To order your expansion joint, specify: pipe size; type of end connections; overall lengths; pressure; temperature; medium; and any special requirements. TEFLON lining available for food

i n d u s t r y .

Standard Galvanized Steel Nipples

Standard packaging for nipples 1/8" thru 2" to 6" lengths is 25 per box.

	1/8	1/4	3/8	1/2	3/4	1	1-1/4	1-1/2	2	2-1/2	3	3-1/2	4	5	6
CI															
1 1/2"															
2"															
2 1/2"															
3"															
3 1/2"															
4"															
4 1/2"															
5"															
5 1/2"															
6"															
7"															
8"															
9"															
10"															
11"															
12"															

Standard Black Steel Nipples

Standard packaging for nipples 1/8" thru 2" to 6" lengths is 25 per box.

Extra Heavy Black Galvanized Steel Nipples

Standard packaging for nipples 1/8" thru 2" to 6" lengths is 25 per box.

Extra Heavy Black Steel Nipples

Standard packaging for nipples 1/8" thru 2" to 6" lengths is 25 per box.

150lb. Malleable Iron Pipe Fittings



A. 90° Elbows



B. Reducing 90° Elbows



C. 45° Elbows



D. 90° Street Elbows



E. 45° Street Elbows



F. Tees



G. Reducing Tees

A.	B.	C.	D.	E.	F.	G.
Black Galv.	Black Galv.	Black Galv.	Black Galv.	Black Galv.	Black Galv.	Black Galv.

1/8" and 1/4" Available



A. Steel Couplings



B. Unions, Gr. Joint



C. Reducers



D. Crosses



E. Caps



F. 45° Y-Branches



G. Return Bends, Open Patt.

A.	B.	C.	D.	E.	F.	G.
Black Galv.	Black Galv.	Black Galv.	Black Galv.	Black Galv.	Black Galv.	Black Galv.



A. Side Outlet Elbows



B. Side Outlet Tees



C. Extension Pieces



D. Hex Locknuts



E. Floor Flanges



F. Reducing 90° Street Elbows

A.	B.	C.	D.	E.	F.
Black Galv.	Black Galv.	Black Galv.	Galv.	C.I. Black	Black Galv.

3000 lb. Forged Steel Fittings Screwed and Socket Weld

(Reducing Screwed and Socket Weld Fittings 100% Higher.)



A. 90° Elbows



B. 45° Elbows



C. Street Elbows



D. Tees



E. Crosses



F. 45° Laterals



G. Unions

Nom. Size	A.		B.		C.	D.		E.		F.		G.	
	Screw	Socket	Screw	Socket	Screw	Screw	Socket	Screw	Socket	Screw	Socket	Screw	Socket
1/8"	\$4.47	\$4.63	\$5.65	\$5.67	POA	\$5.65	\$6.11	POA	\$2.30	POA	POA	\$7.51	\$9.04
1/4"	4.47	4.63	5.65	5.67	6.83	5.65	6.11	POA	2.61	POA	POA	7.51	9.04
3/8"	5.02	4.85	6.18	5.67	6.83	6.03	6.31	POA	3.25	POA	POA	7.51	9.04
1/2"	5.02	5.32	6.47	5.30	7.32	6.57	6.14	14.96	3.87	67.44	90.32	7.51	9.04
3/4"	6.45	5.57	7.37	6.39	9.40	10.15	7.73	21.65	4.43	82.11	101.46	9.04	10.28
1"	9.44	7.11	10.26	8.38	12.02	12.86	10.58	30.39	8.70	101.46	120.23	11.79	13.23



A. Coupling



B. Caps



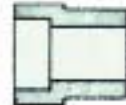
C. Reducers



D. Bushings



E. Plugs



F. Reducer Inserts

Size	A.		B.		C.		D.	E.	F.
	Screw	Socket	Screw	Socket	Screw	Socket			
1/8"	\$1.87	\$4.26	\$2.25	\$4.57	-	-	-	\$0.92	-
1/4"	1.87	4.26	2.25	4.57	2.24	11.59	.95	1.00	-
3/8"	1.87	4.26	2.25	4.57	2.24	11.59	.95	1.14	-
1/2"	1.87	2.51	2.44	3.22	2.75	7.73	.95	1.18	4.80
3/4"	2.57	3.35	3.40	3.76	3.92	8.21	1.28	1.53	5.38
1"	3.87	3.70	5.23	5.76	5.74	9.83	2.24	2.18	6.55



ALLOY STEEL BOLT-STUDS
 High Tensive Alloy Steel for High Pressure and Temperature Service
 Sizes: 3/8" - 2"
 Lengths: 2" - 13"
P.O.A.

Most forged steel fittings in 3000lb. from 1/4" to 4" available in ample quantities. Heavier fittings 4000lb. and 6000lb., are not a stock item and may require a longer lead time for delivery. We also can furnish Vogt, Norris, and Bonney Forge.

X.H. Swaged Nipples and Bull Plugs



AISI C-1025
1" and Smaller
Hexagon Barstock



ASTM A-53
2" and Smaller
Forged Pipe

Size	Price
1/4" x 1/8"	\$6.04
3/8" x 1/8"	\$6.04
3/8" x 1/4"	\$5.30
1/2" x 1/8"	\$6.04
1/2" x 1/4" - 3/8"	\$4.99
3/4" x 3/8" - 1/2"	\$7.35
3/4" x 1/2"	\$5.62
1" x 1/4" - 3/8"	\$9.19
1" x 1/2" - 3/4"	\$7.30
1 1/4" x 1/2" - 3/4"	\$11.34
1 1/4" x 1"	\$10.81
1 1/2" x 1/2" - 3/4"	\$14.49
1 1/2" x 1" - 1 1/4"	\$12.65
2" x 1/2" - 3/4"	\$25.99
2" x 1" & 1 1/2"	\$20.58
2" x 1 1/4"	\$21.84



AISI C-1025
1" and Smaller
Hexagon Barstock

Size	Price
1/8"	\$5.35
1/4"	\$4.83
3/8"	\$5.35
1/2"	\$5.46
3/4"	\$5.62

X.H. Swaged Nipples are available in numerous sizes to 6", threaded or butt weld, concentric or eccentric. Some Stainles Steel in stock.

BONNEY Weldolets & Thredolets

Used for making relatively small branch outlet connections -Weldolets cost 50 to 90% less than tees-are 30 to 95% faster to install- provide 100% pipe strength and full fluid flow.



Specify pipe size being attached.

Outlet Size	Weld-o-lets Std.	Thred-o-lets 3000#
1/8"	POA	\$3.88
1/4"	POA	3.88
3/8"	POA	3.88
1/2"	6.77	3.88
3/4"	7.02	4.67
1"	7.38	5.23
1 1/4"	9.90	7.42
1 1/2"	9.90	8.06
2"	10.32	9.27
2 1/2"	23.39	29.24
3"	27.25	33.85
3 1/2"	POA	POA
4"	34.75	66.25
5"	75.85	-
6"	96.50	-
8"	168.47	-
10"	253.12	-

Stainless Steel 150 lb. Screwed Fittings

Most items shown here in stock for immediate delivery.



A. 90° Elbows



B. 45° Elbows



C. Street Elbows



D. Tee



E. Union



F. Coupling

Size	A.		B.		C.		D.		E.		F.	
	304	316	304	316	304	316	304	316	304	316	304	316
1/8"												
1/4"												
3/8"												
1/2"												
3/4"												
1"												
1 1/4"												
1 1/2"												
2"												
2 1/2"												
3"												
4"												



A. Cap



B. Sq. Hd. Plug



C. Bushing



D. Reducer Coupling

Size	A.		B.		C.		D.	
	304	316	304	316	304	316	304	316
1/8"								
1/4"								
3/8"								
1/2"								
3/4"								
1"								
1 1/4"								
1 1/2"								
2"								
2 1/2"								
3"								
4"								

Stainless Steel Cast Flanges 150 lb.



A. Slip-On



B. Threaded



C. Weld Neck



D. Blind

Size	A.		B.		C.		D.	
	304	316	304	316	304	316	304	316
1/2"								
3/4"								
1"								
1 1/4"								
1 1/2"								
2"								
2 1/2"								
3"								
4"								
5"								
6"								
8"								

Stainless Steel Pipe Nipples



St. Weight,
Sched. 40, Welded



Size	Type	Close	1 1/2"	2"	2 1/2"-3"	3 1/2"-4"	4 1/2"-5"	2 1/2"-3"
1/8"	304 306							
1/4"	304 306							
3/8"	304 306							
1/2"	304 306							
3/4"	304 306							
1"	304 306							
1 1/4"	304 306							
1 1/2"	304 306							
2"	304 306							
2 1/2"	304 306							
3"	304 306							
4"	304 306							

Schedule 40 Stainless Steel Welding Pipe In Stock Call for Pricing

Nickel-Coated Teflon Tape

Designed specifically for difficult stainless steel and aluminum thread sealing applications. Pure nickel base helps prevent galling and seizing. Resists high temperatures and corrosion. Can be used on all types of pipe. Temperature range: -450°F to 550°F (-252°C to 290°C). Spec. UL Listed thread sealant 561R.

FPC Stock Code	Container Size
SA26	1/2" x 260"

Please Note: The stainless steel market is subject to frequent - sometimes daily - price changes. The above prices were current at the time of publication, and are subject to change without notice.