

Letter from the President

Dear Valued Customer,

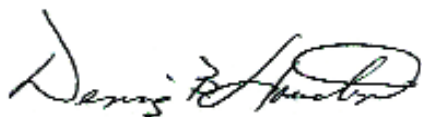
I wanted to take a moment to introduce you to Vierk National Supply. Many times, the terms "New" or "Improved" are used as a gimmick to entice the reader or listener, when in reality the product has changed very little. However, Vierk National Supply is both. We began our transformation in the Spring of 2002 with a name and management change. We are going to continue to look at ways of improving our customer service, efficiently managing and increasing our inventory, and we are working to add products that enhance as well as compliment our existing product offering.

Vierk is an evolving and dynamic company that continues to change daily. We will continue to evolve in an effort to not only meet your needs, but to exceed them. As a valued customer of Vierk National Supply, we welcome any comments or suggestions that you may have, whether it be a way to improve your customer service, or an item that you would like for us to add to our product offering to make your job easier.

This catalog is only a representation of the products that we offer; there are currently over 800 items not depicted in this version (look for these and many others in our 2004 version). You will notice many changes in our catalog. We have added products from several new manufacturers. We have grouped our products to make it easier for you to find and cross-reference parts for your various needs and applications. We also believe that you will find that our pricing is more than competitive.

In the coming months we look forward to working with you in doing our part to earn your trust and confidence. From same day shipping to our newly instituted "no hassle money back guarantee", Vierk National Supply wants to be your partner.

Thank you in advance for your future support and continued confidence in Vierk National Supply.



Dennis Houston, President

Manufacturers' Index

Allpax	52
Apollo	70
Armstrong	18
Bear Trap	19
Bell & Gossett	36-38
Chicago Faucets	78-81
Conbraco	13,30-31,65,68
Consolidated	12
Crane	67
Cuno	87
Danfoss	27
Durabla	57
Elkay	76
Everlasting	69
Flexitallic	51
Flextex	53
Grundfos	38
Hammond	30
Hoffman	19,39-40,89
In-Sink-Erator	74
Keckley	29,56
Kunkle	6-11
Lunkenheimer	65-66
Manville	88
McDonnell-Miller	14-17
Nibco	67
Nicholson	21
Powell	60-61,67
Powers Regulator	25-26
Red-White	62-64
Ridgid	73
Sloan	75,82-83
Smith-Blair	55
Spence Safety Valves	2-5
Spence Regulator Valves	23-24,33
Spriax Sarco	21
Sterlco	25,39
Strahman	26
Symmons	84
T.C. Wilson	59
Topog-e	53
Trerice	25,28
Val-Matic	57
Vogt	71
Watson McDaniel	18-19
Watts	32-33
Yarway	68

Prices are subject to change without notice. Orders accepted subject to price in effect at the time of delivery. Please verify current pricing by phone or fax.

Copyright, Vierk National Supply 2003. No part of this publication may be reproduced, transmitted or stored in any form or by any means, electronic or mechanical, including photocopy, recording or by information storage or retrieval system without written permission from Vierk National Supply.



Vierk National Supply Index

A			
Air Cocks	30	Feeders	
Air Flow Switches	16	Chemical	42
Air Gaps	33	Boiler Water	14,15
Air Regulator	33	Feed Water	15
Air Separator	37	Filters	87
Air Valve	33,37,57	Fittings	
Air Vents	37,89	AAR	46
Airtrol Fitting	37	Aluminum	50
Anti-Seize Compound	54	Brass	50
B		Bull Plugs	47
Backflow Preventor	33	Cast-Iron	46-51
Ball Valves		Cast-Iron Flanges	48
Actuator	70	Copper	50
Bolted	63,64	Dielectric Unions	CALL
Bronze	64,70	Discharge Ell (Safety)	7,48
Carbon Steel	70	Face Bushing Brass	72
Stainless	64,70	Flanges	48,50,51
Three Piece	63,70	Forged Steel-3000#	47
Basin Wrench	72	Malleable Iron	45
Bearing Assemblies	37	Radiator	30
Boiler Controls		Stainless	49
Low-Water	14,15,17	Threadolets	47
Pump	17	Weld	48,49
Water Feed	14,15	Weldolets	47
Blow-Down Valves	68,69	Flange Pak	53
Bolts (Hex Head Cap)	55	Flanges	
Brushes		Carbon Steel	48
Boiler Tube	72	Cast-Iron	48
Bull Plugs	47	Stainless	49
Butterfly Valves	71	Flex Connectors	43
C		Float Valve	56
Cabinet Unit Heaters	35	Floats (Stainless Steel)	56
Cartridge Filter	87	Flow Indicator	29
Chain Sprocket	68	Flow Meter	29
Check Valves		Flow Switch	16
Air Compressor	65	Flue Brush	72
Backflow	33	Flue Brush Handle	72
Bronze	60,62	Flush Valve	79,82-83
Flanged	63,67	Flush Valve Parts	83
Lift Check	66	Foot Valve	54,57
Spring Loaded	57	Force Cup	72
Stainless	57,65	Friction Washer	30
Stop & Check	67	G	
Swing	60,62-63,65-67	Garbage Disposer	74
Clamps		Gas Cocks	30
Pipe Hanger	55	Gas Regulators	30
Pipe Repair	55	Gauge Syphons	28
Cleaner/Degreaser	89	Gasket	
Cleanout Plugs/Brass	72	Boiler Door	53
Closet Augers	73	Flange	51,53
Cocks		Flange Pak	53
Air	30	Flexitallic	51
Gas	30	Gauge Glass	30
Coil Syphons	28	Handhole/Manway	53
Column Showers	85	Sheet Gasket	52
Compartment, Toilet	74	Valve Stem Packing	52,65
Compound		Water Gauge Glass	30
Anti-Seize	54	Gasket Cutter	52
Pipe Thread	54	Gauges	
Penetrating Oil	54	Pressure	28
Condensate Pumps	39,40	Temperature/Pressure	28
Couplers	37	Vacuum	28
D		Water	31
Discharge Elbows	48	Gauge Glass	30
Dispensers		Gauge Glass Cutter	30
Hot Water	74	Glasses (Safety)	92-93
Soap	76	Gloves	91
Tissue	76	Goggles	93
Disposer, In-Sink-Erator	74	Guard Rods (Water Gauge)	30
Drain Cleaners	73	H	
Drip Pan Elbows	7,48	Hard Hats	94-95
Drum Trap Plug Wrench	73	Hangers, Pipe	55
Duct Tape	54	Heat Exchangers	34
E		Hose Nozzle	26
Expansion Absorbers	43	Hose Station	26
Expansion Compensator	43	Hygrometer	28
Expansion Joints	43	I-J-K-L	
Expansion Tank	33,86	Impellers	37,38
Eye Wash Station	84	Insulation (Pipe)	88
F		Liquid Flow Switch	16
Fan Coil Unit	35	Low-Water Control	14-15,17
Faucets		M-N-O	
Chicago	78-81	Metering Valve	65
Distilled	80	Meter (Water)	89
Metering & Tempering	26,84	Mixing Valve	25-26,84
Oil Barrel	30	Motors	37-38
Sloan	82,83	Nipples	
		Brass	50
		Standard & Galvanized	44
		Stainless	49
		Swaged	47
		Nuts (Heavy Hex)	55
		Oil (Penetrating)	54
		P	
		Packing	52,65
		Packing Hook	52
		Penetrating Oil	54
		Pet Cocks	30
		Pipe Nipples	44
		Pipe Wrench	73
		Piston Check	71
		Plugs	
		Brass Cleanout	72
		Plunger (Toilet)	72
		Pump Controls	17
		Pumps	
		Acid	41
		Booster	36,38
		Centrifugal	38
		Chemical Metering	42
		Circulating	36,38
		Condensate	39-40
		Sewage/Effluent	41
		Sump	41-42
		Pressure Snubber	28
		R	
		Radiator Keys	30
		Radiator Handle	72
		Radiator Nipple Wrench	72
		Radiator Valve	27,30
		Radiator Vent	89
		Radiator Steam Trap	21
		Regulators	
		Press Reducing (PRV)	33
		Steam/Pressure	23-24
		Temperature	24-26
		Relief Valve (see Safety)	
		Rope Gasket	53
		S	
		Safety Valves	
		Air, Steam, Liquid	2-13
		Liquid (Press/Temp)	32,37
		Vacuum	32-33
		Safety Valve Discharge Ells	7,48
		Seat-Toilet	74
		Seal/Bearing Assembly	37-38
		Seal Kit	37-38
		Sheet Packing	52
		Sheet Rubber	52
		Shower Head	82,84
		Showers	
		Safety-Emergency	84
		Insttutional/Commercial	85
		Sight Flow Indicator	29
		Sight Glass	30
		Sink	
		Bar	76
		Commercial/Insttutional	76,85
		Sling Psychrometer	28
		Snubber, Pressure	28
		Soap Dispenser	76
		Solenoid Valve	90
		Steam Cocks	30
		Steam Traps	
		Bucket	18-19,21
		Disc	19
		Radiator	21-22
		Repair Kits	18,20-22
		Thermo-Dynamic	19,21
		Stock Watering Valve	30
		Strainers	
		Stainless	29
		Threaded & Flange	29,63
		Sump Pumps	41-42
		Syphon Coil (Gauge)	28
		T	
		Tank Heater	34
		Tape	
		Duct	54
		Insulation	88
		Teflon	49,54
		Test Plug	72
		Thermometers	
		Dial	28
		Pocket	28
		Fixed & Angle	28
		Pipe	29
		Thermostat Covers	27
		Threaded Rod	55
		Threadolet	47
		Tissue Dispenser	76
		Toilet Partitions	74
		Toilet Seats	74
		Traps (see Steam Traps)	
		Tools	
		Gauge Glass Cutter	30
		Packing Hook	52
		Pipe Wrench	73
		Street Key Socket	72
		U-V	
		Unit Heaters-Wall Mount	CALL
		Vacuum Breakers	32-33,83
		Valves	
		Actuator	70
		Air	15
		Angle	61,65-66
		Ball	54,63-64,70
		Bar Stock	65
		Blow-Down	68-69
		Butterfly	64,71
		Check	60,62-63,66-68
		Cock	30
		Float & Lever	56
		Flush	75,79,82-83
		Foot	54
		Forged Steel	71
		Gas	30
		Gate	60-67,71
		Globe	60-67,71
		Knee Action	78
		Lever (Grip & Pull)	65,68
		Metering	65
		Needle	65
		Non-Return	67
		Pedal	78
		Pressure Reg/Reducing	23-24,32-33,37,54
		PVC	54
		Quick-Opening	69
		Radiator	27,30
		Safety (see Safety Valve)	
		Solenoid	90
		Stainless Steel	65
		Stock Watering	30
		Stop Check	67
		Temperature Regulating	24-25
		Tempering	25-26
		Test-N-Check	16
		Vent	89
		Wafer	64
		Water Gauge Glass	31
		Vertical Ball Check	71
		W	
		Wash Sinks	85
		Water Filter	87
		Water Hammer Arrestor	29
		Water Meters	89
		Wrenches	
		Basin	72
		Drum Trap Plug	72
		Gauge Glass Cutter	30
		Faucet	72
		Internal Pipe	72
		Pipe	73
		Plug	72
		Radiator Nipple Wrench	72
		Strainer Lock Nut	72
		Spud	72



FIGURE 31 BRONZE SERIES

SIZES 1/2" – 2 1/2"
PRESSURES to 300 PSIG at 422°F

Application Data

- | Steam Boilers
- | Pressure Reducing Stations
- | Unfired Steam Pressure Vessels & Lines
- | Accumulators, Sterilizers, Steam Cleaners
- | Air compressors, Cookers, Receivers
- | Pneumatic Systems
- | OEM Equipment



- | Meets ASME Section I & VIII Code for Steam, Air & Non-hazardous Gas Service
- | "UV" National Board Certified
- | Dual Ring Control
- | Rugged Cast Unitized Bonnet
- | SS Spring Supplied as Standard
- | Full Nozzle
- | Soft Seat Design Available
- | Open Lever Assembly

Valve Ratings

Model	Pressure PSIG (bar)	Temperature °F (°C)
0031/0041/041A/41AT/41AA	5 to 250 (.3 to 17.2)	-20 to 406 (-29 to 208)
0032/0042/042A/42AT/42AA	5 to 300 (.3 to 20.7)	-20 to 422 (-29 to 216)
0033/0043/043A/43AT	5 to 250 (.3 to 17.2)	-20 to 406 (-29 to 208)

Options

- | Top Outlet Discharge
- | BSP Connections
- | Soft Seated Valves
- | Plain Cap (on selected models)

Models

- | 0031 - ASME Section I Steam, Bronze Trim
- | 0041 - ASME Section VIII Steam, Bronze Trim
- | 041A - ASME Section VIII Air, Bronze Trim
- | 41AT - Top Outlet on 041A
- | 41AA - Plain Cap on 041A (D orifice only)
- | 0032 - SS Base & Disc on 0031
- | 0042 - SS Base & Disc on 0041
- | 042A - SS Base & Disc on 041A
- | 42AT - SS Base & Disc on 41AT
- | 42AA - SS Base & Disc on 41AA (D orifice only)
- | 0033 - EPDM Soft Seat on 0031
- | 0043 - EPDM Soft Seat on 0041
- | 043A - Viton Soft Seat on 041A
- | 43AT - Viton Soft Seat on 41AT

Applicable Codes

- | ASME Section I "V" for Steam
- | ASME Section VIII "UV" for Steam/Air/Gas
- | API 527
- | Canadian Registration # 0G0591.9C

ORDERING CODE

MODEL NUMBER (Must be 4 Digits)	ORIFICE	INLET SIZE	CONNECTIONS	—	SET PRESSURE (Must be 3 Digits)
example: 0041	D	C	A	—	040
0031 - ASME Section I Steam, Bronze Trim	D	C - 1/2	A - MPT x FPT		Set Pressure
0041 - ASME Section VIII Steam, Bronze Trim	E	D - 3/4	E - MPT x Top		LAS - Loosely Assembled
041A - ASME Section VIII Air, Bronze Trim	F	E - 1	F - MBSP x FBSP		
41AT - Top Outlet on 041A	G	F - 1 1/4	Z - Other		
41AA - Plain Cap on 041A (D orifice only)	H	G - 1 1/2			
0032 - SS Base & Disc on 0031	J	H - 2			
0042 - SS Base & Disc on 0041		J - 2 1/2			
042A - SS Base & Disc on 041A					
42AT - SS Base & Disc on 41AT					
42AA - SS Base & Disc on 41AA					
0033 - EPDM Soft Seat on 0031					
0043 - EPDM Soft Seat on 0041					
043A - Viton Soft Seat on 041A					
43AT - Viton Soft Seat on 41AT					

Priced on Application



FIGURE 31 CAST IRON SERIES

Application Data

- I Steam Boilers
- I Pressure Reducing Stations
- I Unfired Steam Pressure Vessels & Lines
- I Air compressors, Cookers, Receivers
- I Pneumatic Systems
- I OEM Equipment



SIZES 1½" – 6"
PRESSURES to 250 PSIG at 406°F

- I Meets ASME Section I & VIII Code for Steam, Air & Non-hazardous Gas Service
- I "UV" National Board Certified
- I Dual Ring Control
- I Heavy Duty Construction
- I Flanged or Threaded Connections
- I SS Trim Design Available
- I Heavy Duty Open Lever Assembly

Valve Ratings

Model	Pressure PSIG (bar)	Temperature °F (°C)
All	5 to 250 (.3 to 17.2)	-20 to 406 (-29 to 208)

Options

- I SS Trim
- I BSP Connections

Applicable Codes

- I ASME Section I "V" for Steam
- I ASME Section VIII "UV" for Steam/Air/Gas
- I API 527
- I Canadian Registration # 0G0591.9C

Models

- I 0031 - ASME Section I Steam, Bronze Trim
- I 0041 - ASME Section VIII Steam, Bronze Trim
- I 041A - ASME Section VIII Air, Bronze Trim
- I 0032 - SS Base & Disc on 0031
- I 0042 - SS Base & Disc on 0041
- I 042A - SS Base & Disc on 041A

ORDERING CODE

MODEL NUMBER	ORIFICE (Must be 4 Digits)	INLET CONNECTIONS SIZE		—	SET PRESSURE (Must be 3 Digits)
example:	0 4 1 A	K	H	C	— 1 0 0
0031 - ASME Section I Steam, Bronze Trim		J	G - 1½	B - FPT x FPT	Set Pressure
0041 - ASME Section VIII Steam, Bronze Trim		K	H - 2	C - 250# x FPT	LAS - Loosely Assembled
041A - ASME Section VIII Air, Bronze Trim		L	J - 2½	D - 250# x 125#	
0032 - SS Base & Disc on 0031		M	K - 3	Z - Other	
0042 - SS Base & Disc on 0041		N	M - 4		
042A - SS Base & Disc on 041A		P	P - 6		
		Q			
		R			

Priced on Application



FIGURE 800 SAFETY RELIEF VALVE

SIZES 1/2" – 1 1/2"

PRESSURES to 900 PSIG at 422°F

Application Data

- | Liquid Filled Pressure Vessels & Systems
- | Steam/air/gas Pressure Vessels & Systems
- | Low temperature cryogenic systems
- | Pumps, Tanks & Hydraulic Systems
- | Pressure Reducing Stations
- | Vacuum Systems
- | OEM Equipment



- | Meets ASME VIII Code for Liquid, Steam, Air & Gas Service
- | "UV" National Board Certified
- | Short Blowdown
- | No Ring Adjustments Required
- | Unitized Bonnet Design
- | All SS Internals/SS Springs
- | Pivoting Disc Design
- | Full Nozzle
- | Soft Seat Design Available
- | Wide Variety of Options

Applicable Codes

- | ASME Section VIII "UV" for Liquid/Steam/Air/Gas
- | API 527
- | Canadian Registration # 0G0591.9C

Options

- | Screwed, Plain & Packed Caps
- | BSP Connections
- | Oxygen Cleaning
- | EPDM, Viton & TFE/25% Glass Soft Seats
- | Low Temperature Cryogenic Service Trim*

Models

- | 810 - Bronze Bonnet & Base, SS Disc
- | 812 - EPDM Seat on 810
- | 814 - Viton Seat on 810
- | 816 - TFE/25% Glass Seat on 810
- | 820 - Bronze Bonnet, SS Base & Disc
- | 822 - EPDM Seat on 820
- | 824 - Viton Seat on 820
- | 826 - TFE/25% Glass Seat on 820
- | 860 - 316 SS Bonnet, Base & Disc
- | 862 - EPDM Seat on 860
- | 864 - Viton Seat on 860
- | 866 - Teflon Seat on 860

Priced on Application

VALVE RATINGS

Model	Temperature* °F (°C)	Pressure PSIG (bar)		
		D,E Orifices	F,G Orifices	H Orifice
810/812	-20-406 (-28.9-207.8)	5-250		
814/816	-20-400 (-28.9-204.4)	(0.34-17.24)		
820 ⁽¹⁾	-20-422 (-28.9-216.7)	5-900 (0.34-62.06)	5-600 (0.34-41.37)	5-500 (0.34-34.48)
822 ⁽¹⁾ /824 ⁽²⁾ /826 ⁽²⁾	-20-400 (-28.9-204.4)			
860	-20-800 (-28.9-427)			
862/864/866	-20-400 (-28.9-204.4)			

Maximum Backpressure (Plain/Packed Cap) - 50 PSIG (3.45 barg)
Vacuum Pressure Range - 10 to 30" HG (3.38.64 to 1015.92 mbarg)

(1) Maximum pressure for steam is 300 PSIG (20.67 barg).
(2) Maximum pressure for steam is 250 PSIG (17.4 barg).



FIGURE 10 SERIES

Priced on Application



SIZES 3/4" – 3"

PRESSURES to 15 PSIG at 250°F

Application Data

- I Industrial Low Pressure Steam Heating Boilers
- I Commercial Low Pressure Steam Heating Boilers

Valve Ratings

	Model	Pressure PSIG (bar)	Temperature °F (°C)
All		5 to 15 (.3 to 1)	-20 to 250 (-29 to 121)

Applicable Codes

- I ASME Section IV "HV" for Low Pressure Steam
- I Canadian Registration #0G0591.9C

- I Meets ASME Section IV Code for Steam Service
- I "HV" National Board Certified
- I Low Cost
- I High Capacity
- I Dependable
- I Tight Shutoff
- I Sharp Popping and Closing Action
- I High Degree of Repeatability
- I Unitized Body

Models

- I 0010 - Cast Iron Body, Bronze Seats

FIGURE 15 SERIES

Priced on Application



SIZES 3/4" – 3"

PRESSURES to 15 PSIG at 400°F

Application Data

- I Bulk Hauling Railroad and Truck Tank Cars
- I High Volume Blowers
- I Compressors
- I Dryers
- I Pneumatic Equipment
- I Tanks

Valve Ratings

	Model	Pressure PSIG (bar)	Temperature °F (°C)
All		5 to 15 (.3 to 1)	-20 to 400 (-29 to 204)

Applicable Codes

- I ASME Section VIII "UV" for Air (2" Figure 15C & 15LC only)
- I Canadian Registration #0G0591.9C – 015C, 015LC
#0H0591.9C – 015A, 015LA

Options

- I Stainless Trim
- I Set Pressures 15 to 60 psi (Consult Factory)

- I Air & Non-hazardous Service
- I Low Cost
- I High Capacity
- I Cast Iron or Aluminum Body
- I Dependable
- I Tight Shutoff
- I Sharp Popping & Closing Action
- I High Degree of Repeatability
- I Unitized Body

Models

- I 015C - Cast Iron Body, Bronze Seats, Pull Ring
- I 015A - Cast Iron Body, Bronze Seats, Sealed Cap
- I 15LC - Aluminum Body on 015C (2 x 2 1/2" only)
- I 15LA - Aluminum Body on 015A (2 x 2 1/2" only)

FIGURE 15V SERIES

Priced on Application



SIZES 3/4" – 3"

PRESSURES to 30 PSIG at 400°F

Application Data

- I Vacuum Pumps
- I Bulk Hauling Railroad & Truck Tank Cars
- I Pneumatic Equipment
- I Tanks

Valve Ratings

	Model	Pressure in.HG (mmHG)	Temperature °F (°C)
All		5 to 30 (.2 to 1)	-20 to 400 (-29 to 204)

Applicable Codes

- I Canadian Registration #0H0591.9C

Options

- I Stainless Trim

- I Vacuum Service
- I Low Cost
- I High Capacity
- I Cast Iron or Aluminum Body
- I Dependable
- I Tight Shutoff
- I Sharp Popping & Closing Action
- I High Degree of Repeatability
- I Unitized Body

Models

- I 015V - Cast Iron Body, Bronze Seats, Vacuum Service
- I 015LV - Aluminum Body on 015V (2" x 2 1/2" only)



Model 6010

A side outlet safety valve with bronze/brass construction. Available with O-ring seats.

Size	Orifice	VNS#	Price
1/2" x 3/4"	D	KV6010DC	\$100.88
3/4" x 3/4"	D	KV6010DD	\$104.58
3/4" x 1"	E	KV6010ED	\$115.29
1" x 1"	E	KV6010EE	\$122.70
1" x 1-1/4"	F	KV6010FE	\$131.73
1-1/4" x 1-1/4"	F	KV6010FF	\$149.88
1-1/4" x 1-1/2"	G	KV6010GF	\$169.63
1-1/2" x 1-1/2"	G	KV6010GG	\$180.33
1-1/2" x 2"	H	KV6010HG	\$203.38
2" x 2"	H	KV6010HH	\$268.45
2" x 2-1/2"	J	KV6010JH	\$281.59
2-1/2" x 2-1/2"	J	KV6010JJ	\$384.56

Model 6030

The same as a 6010, but with a stainless steel nozzle and disc for a longer life. Available with O-ring seats.

Size	Orifice	VNS#	Price
1/2" x 3/4"	D	KV6030DC	\$226.55
3/4" x 1"	E	KV6030ED	\$260.26
1" x 1-1/4"	F	KV6030FE	\$333.72
1-1/4" x 1-1/2"	G	KV6030GF	\$423.64
1-1/2" x 2"	H	KV6030HG	\$484.17
2" x 2-1/2"	J	KV6010JH	\$602.61

Model 6121

The same as a 6182, but with a Teflon disc insert for exceptional leak-free performance - Steam only.

Size	Orifice	VNS#	Price
1/2"	D	KV6121DC	\$107.23
3/4"	E	KV6121ED	\$121.05
1"	F	KV6121FE	\$138.36
1-1/4"	G	KV6121GF	\$178.16
1-1/2"	H	KV6121HG	\$212.75
2"	J	KV6121JH	\$295.76

Model 6283

The same as a 6010, but has an over-sized side outlet.

Size	Orifice	VNS#	Price
3/4" x 1-1/4"	E	KV6283ED	\$121.92
1" x 1-1/2"	F	KV6283FE	\$139.20
1-1/4" x 2"	G	KV6283GF	\$178.97
1-1/2" x 2-1/2"	H	KV6283HG	\$214.42
2" x 3"	J	KV6283JH	\$297.43

Model 6230

The same as a 6283, but with a stainless steel nozzle and disc for a longer life.

Size	Orifice	VNS#	Price
3/4" x 1-1/4"	E	KV6230ED	\$262.02
1" x 1-1/2"	F	KV6230FE	\$335.53
1-1/4" x 2"	G	KV6230GF	\$427.22
1-1/2" x 2-1/2"	H	KV6230HG	\$487.77
2" x 3"	J	KV6230JH	\$607.08



6000 Series

Model 6010, 6182, 6823, 6221

Steam Service - 3 to 250psig

Air Service - 3 to 300psig

Model 6030, 6130, 6230

Steam and Air Service 3 to 250psig

Applications Include:

Boilers and Generators

Compressors

Pressure Vessels

Reducing Stations

Model 6021

The same as a 6010, but with a Teflon disc insert for exceptional leak-free performance - Steam only.

Size	Orifice	VNS#	Price
1/2" x 3/4"	D	KV6021DC	\$112.80
3/4" x 3/4"	D	KV6021DD	\$114.47
3/4" x 1"	E	KV6021ED	\$126.82
1" x 1"	E	KV6021EE	\$135.06
1" x 1-1/4"	F	KV6021FE	\$144.93
1-1/4" x 1-1/4"	F	KV6021FF	\$164.69
1-1/4" x 1-1/2"	G	KV6021GF	\$186.10
1-1/2" x 1-1/2"	G	KV6021GG	\$197.63
1-1/2" x 2"	H	KV6021HG	\$223.17
2" x 2"	H	KV6021HH	\$295.62
2" x 2-1/2"	J	KV6021JH	\$310.42
2-1/2" x 2-1/2"	J	KV6021JJ	\$422.43

Model 6182

A top outlet safety valve with bronze/brass construction. Available with O-ring seats.

Size	Orifice	VNS#	Price
1/2"	D	KV6182DC	\$97.71
3/4"	E	KV6182ED	\$109.83
1"	F	KV6182FE	\$125.39
1-1/4"	G	KV6182GF	\$161.70
1-1/2"	H	KV6182HG	\$193.68
2"	J	KV6182JH	\$268.89

Model 6130

The same as a 6182, but with a stainless steel nozzle and disc for a longer life. Available with O-ring seats.

Size	Orifice	VNS#	Price
1/2"	D	KV6130DC	\$213.60
3/4"	E	KV6130ED	\$245.61
1"	F	KV6130FE	\$314.79
1-1/4"	G	KV6130GF	\$400.41
1-1/2"	H	KV6130HG	\$456.62
2"	J	KV6130JH	\$569.06

Model 6221

The same as a 6283, but with a Teflon disc insert for exceptional leak-free performance - Steam only.

Size	Orifice	VNS#	Price
3/4" x 1-1/4"	E	KV6221ED	\$134.32
1" x 1-1/2"	F	KV6221FE	\$153.14
1-1/4" x 2"	G	KV6221GF	\$196.94
1-1/2" x 2-1/2"	H	KV6221HG	\$235.93
2" x 3"	J	KV6221JH	\$327.24



6252 Series

Model 6252
Pressure - 10 to 25psig

A cast iron vavle with an enclosed spring and stainless steel trim. Available for ASME Section I Steam, ASME Section VIII Steam or Section VIII Air Service

Size	Orifice	Inlet	Outlet	VNS#	Price
1-1/2" x 2-1/2"	J	NPT	NPT	KV6252AJG	\$729.47
1-1/2" x 2-1/2"	J	Flanged	NPT	KV6252FJG	\$729.47
2" x 2-1/2"	J	Flanged	NPT	KV6252FJH	\$819.93
2-1/2" X 2-1/2"	J	Flanged	NPT	KV6252FJJ	\$837.84
2" x 3"	K	NPT	NPT	KV6252AKH	\$828.07
2" x 3"	K	Flanged	NPT	KV6252FKH	\$828.07
2-1/2" x 3"	K	Flanged	NPT	KV6252FKJ	\$923.41
3" x 3"	K	Flanged	NPT	KV6252FKK	\$941.36
4" x 3"	K	Flanged	NPT	KV6252FKM	\$1,258.97
2-1/2" x 4"	L	NPT	NPT	KV6252ALJ	\$1,101.09
2-1/2" x 4"	L	Flanged	NPT	KV6252FLJ	\$1,101.09
3" x 4"	L	Flanged	NPT	KV6252FLK	\$1,199.70
4" x 3"	L	Flanged	NPT	KV6252FLM	\$1,268.97
3" x 4"	M	NPT	NPT	KV6252AMK	\$1,405.10
3" x 4"	M	Flanged	NPT	KV6252FMK	\$1,405.10
4" x 4"	M	Flanged	NPT	KV6252FMM	\$1,540.38
4" x 6"	N	Flanged	Flanged	KV6252KNM	\$2,482.53
4" x 6"	P	Flanged	Flanged	KV6252KPM	\$3,243.99
6" x 8"	Q	Flanged	Flanged	KV6252KQP	\$5,006.55
6" x 8"	R	Flanged	Flanged	KV6252KRP	\$6,825.87

Model 300

Pressure - 15 to 410psig at 800°F
15 to 505psig at 750°F
Flanges - ANSI 300lb inlet
ANSI 150lb outlet

Model 300 & 600

Heavy duty construction of high quality cast steel with stainless steel trim, and an exposed spring for high temperature applications.

Model 600

Pressure - 15 to 825psig at 800°F
15 to 1000psig at 750°F
Flanges - ANSI 600lb inlet
ANSI 150lb outlet

Size	Orifice	VNS#	Price
1-1/4" x 1-1/2"	F	KV300LFF	\$1,383.83
1-1/4" x 1-1/2"	G	KV300LGF	\$1,431.88
1-1/2" x 2-1/2"	H	KV300LHG	\$1,591.80
1-1/2" x 2-1/2"	J	KV300LJG	\$2,034.79
2" x 3"	K	KV300LKH	\$2,862.92
2-1/2" x 4"	L	KV300LLJ	\$3,663.36
3" x 4"	M	KV300LMK	\$4,557.47
4" x 6"	N	KV300LNM	\$5,174.24
4" x 6"	P	KV300LPM	\$6,398.68
6" x 8"	Q	KV300LQP	\$9,110.80



Size	Orifice	VNS#	Price
1-1/4" x 1-1/2"	F	KV600LFF	\$1,767.85
1-1/4" x 1-1/2"	G	KV600LGF	\$1,946.93
1-1/2" x 2-1/2"	H	KV600LHG	\$2,337.57
1-1/2" x 2-1/2"	J	KV600LJG	\$2,694.96
2" x 3"	K	KV600LKH	\$3,745.32
2-1/2" x 4"	L	KV600LLJ	\$4,891.40
3" x 4"	M	KV600LMK	\$5,789.65
4" x 6"	N	KV600LNM	\$6,931.45
4" x 6"	P	KV600LPM	\$8,195.16
6" x 8"	Q	KV600LQP	\$11,642.94

Model 299



Size	VNS#	Price
3/4" x D x 3/4"	KV0299-D	\$48.64
1 x E x 1"	KV0299-E	\$48.64
1-1/4" x F x 1-1/4"	KV0299-F	\$57.58
1-1/2" x G x 1-1/2"	KV0299-G	\$57.58
2" x H x 2"	KV0299-H	\$55.59
2-1/2" x J x 2-1/2"	KV0299-J	\$59.56
3" x K x 3"	KV0299-K	\$83.38
4" x M x 4"	KV0299-M	\$125.08
6" x P x 6"	KV0299-P	\$246.17
8" x Q x 8"	KV0299-Q	\$671.03
10" x R x 10"	KV0299-R	\$1,572.36

A drip pan elbow is necessary after the outlet of a safety valve used for steam. The purpose of the drip pan elbow is to eliminate any condensate that might form and rest in the outlet of the safety valve. Water in the outlet of the safety valve creates an artificially higher set point by resting on top of the disc. Another purpose of the drip pan elbow is to eliminate the stress put on the safety valve by piping. Since the outlet of the drip pan elbow can not be "hard piped" to anything, the only weight the safety valve has to endure is the weight of the drip pan elbow. When the outlet piping is carried by the safety valve, the valve may not open at the correct set point because the valve is slightly bent or even "egged" in certian cases, making it hard for the disc to move up and down freely.

Options to make your safety valve last longer!!

O-Rings provide your valve with extra protection against leaking.

Orifice	Price
D	\$48.64
E	\$48.64
F	\$57.58
G	\$57.58
H	\$55.59
J	\$59.56

Use Vibration Dampening Springs where vibration is a problem.

Orifice	Price
D	\$48.64
E	\$48.64
F	\$57.58
G	\$57.58
H	\$55.59
J	\$59.56



ASME Section IV Low Pressure Stem Heating Boiler Valves. All Valves are set to 15psig and carry the ASME "HV" stamp.

Model 6933, 6934 and 6935

Model 6933 is a side outlet safety valve with bronze / brass construction.

Model 6934 is a side outlet valve with bronze / brass construction, but has a Teflon disc insert for better seat tightness.

Model 6935 is a side outlet valve with a bronze body and stainless steel trim for maximum operating life.

Model 6933

Size	Orifice	VNS#	Price
1/2" x 3/4"	D	KV6933DC	\$99.68
3/4" x 3/4"	D	KV6933DD	\$101.29
3/4" x 1"	E	KV6933ED	\$111.63
1" x 1"	E	KV6933EE	\$118.83
1" x 1-1/4"	F	KV6933FE	\$127.59
1-1/4" x 1-1/4"	F	KV6933FF	\$145.13
1-1/4" x 1-1/2"	G	KV6933GF	\$164.28
1-1/2" x 1-1/2"	G	KV6933GG	\$174.65
1-1/2" x 2"	H	KV6933HG	\$196.98
2" x 2"	H	KV6933HH	\$259.97
2" x 2-1/2"	J	KV6933JH	\$272.71
2-1/2" x 2-1/2"	J	KV6933JJ	\$372.41



Model 6934

Size	Orifice	VNS#	Price
3/4" x 1"	E	KV6934ED	\$134.46
1" x 1-1/4"	F	KV6934FE	\$153.68
1-1/4" x 1-1/2"	G	KV6934GF	\$197.34
1-1/2" x 2"	H	KV6934HG	\$236.64
2" x 2-1/2"	J	KV6934JH	\$447.97

Model 6935

Size	Orifice	VNS#	Price
1/2" x 3/4"	D	KV6935DC	\$228.77
3/4" x 1"	E	KV6935ED	\$262.84
1" x 1-1/4"	F	KV6935FE	\$337.04
1-1/4" x 1-1/2"	G	KV6935GF	\$427.87
1-1/2" x 2"	H	KV6935HG	\$488.98
2" x 2-1/2"	J	KV6935JH	\$608.63

Model 6254

Model 6254 is a rugged cast iron safety valve with stainless steel trim to provide a lifetime of reliable operation.



See Kunkle Ordering Guide pg. 11

Size	Orifice	Inlet	Outlet	VNS#	Price
1-1/2" x 2-1/2"	J	NPT	NPT	KV6254AJG	\$729.47
1-1/2" x 2-1/2"	J	Flanged	NPT	KV6254FJG	\$729.47
2" x 2-1/2"	J	Flanged	NPT	KV6254FJH	\$819.93
2-1/2" X 2-1/2"	J	Flanged	NPT	KV6254FJJ	\$837.84
2" x 3"	K	NPT	NPT	KV6254AKH	\$828.07
2" x 3"	K	Flanged	NPT	KV6254FKH	\$828.07
2-1/2" x 3"	K	Flanged	NPT	KV6254FKJ	\$923.41
3" x 3"	K	Flanged	NPT	KV6254FKK	\$941.36
4" x 4"	K	Flanged	NPT	KV6254FKM	\$1,002.56
2-1/2" x 4"	L	NPT	NPT	KV6254ALJ	\$1,101.09
2-1/2" x 4"	L	Flanged	NPT	KV6254FLJ	\$1,101.09
3" x 4"	L	Flanged	NPT	KV6254FLK	\$1,199.70
4" x 4"	L	Flanged	NPT	KV6254FLM	\$1,268.97
3" x 4"	M	NPT	NPT	KV6254AMK	\$1,405.10
3" x 4"	M	Flanged	NPT	KV6254FMK	\$1,405.10
4" x 4"	M	Flanged	NPT	KV6254FMM	\$1,540.38
4" x 6"	N	Flanged	Flanged	KV6254KNM	\$2,482.53
4" x 6"	P	Flanged	Flanged	KV6254KPM	\$3,243.99

Model 930

Model 930 provides extra high capacity for industrial, commercial and residential low pressure steam heating boilers. Cast iron construction with bronze nozzle, disc and guide. The test lever is reversible for "pull up" or "pull down" manual



Size	VNS#	Price
2" x H x 2"	KV0930-H	\$116.98
2-1/2" x J x 2-1/2"	KV0930-J	\$216.03
3" x K x 3"	KV0930-K	\$288.66

Model 900 Series Valve



Model 910, 911 and 927

The 910 and 911 series valve is available with 150lb., 300lb. and 600lb. inlet flanges and 150lb. outlet flanges. The 910 series valve is a cast steel valve body and bonnet with stainless steel trim. The 911 series valve is an all stainless steel valve, suitable for sanitary applications. The 911 is available with a Tir-clover Adaptor inlet. The 927 is a cast steel body with stainless trim. This valve is only available with a packed test lever and the ASME Section I stamp for high temperature/pressure hot water boilers.

Model 912 and 913

The 912 series is brass/bronze body and nozzle with a stainless steel warn ring and disc. The 913 series is a bronze/brass body and bonnet with a stainless steel nozzle, disc and disc holder. All of the Series 900 valves can be set for vacuum service and are available with a soft seat for maximum leak-free performance, except for the Model 927. Seat materials include

Model 910

Size	VNS#	Price
1/2" x D x 1"	KV910BDCM	\$515.24
3/4" x E x 1-1/4"	KV910BEDM	\$552.15
1" x F x 1-1/2"	KV910BFEM	\$579.83
1-1/4" x G x 2"	KV910BGFM	\$852.55
1-1/2" x H x 2-1/2"	KV910BHGM	\$1,061.33
2" x J x 3"	KV910BJHM	\$1,534.63

Model 912

Size	VNS#	Price
1/2" x D x 3/4"	KV912BDCM	\$109.51
1/2" x D x 1"	KV912BDCM	\$109.51
3/4" x E x 1-1/4"	KV912BEDM	\$121.47
1" x F x 1-1/2"	KV912BFEM	\$144.59
1-1/4" x G x 2"	KV912BGFM	\$176.22
1-1/2" x H x 2-1/2"	KV912BHGM	\$339.82
2" x J x 3"	KV912BJHM	\$421.20

Plain Lever

Series 910-911-916-917

Orifice	Price
D	\$25.89
E	\$30.75
F	\$38.03
G	\$50.18
H	\$63.80
J	\$76.07

Series 912-913-918-919

Orifice	Price
D	\$25.89
E	\$30.75
F	\$38.03
G	\$50.18
H	\$63.80
J	\$76.07

Model 913

Size	VNS#	Price
1/2" x D x 3/4"	KV913BDCM	\$189.07
1/2" x D x 1"	KV913BDCM	\$189.07
3/4" x D x 3/4"	KV913BDDM	\$207.89
1" x D x 1"	KV913BDEM	\$346.71
3/4" x E x 1-1/4"	KV913BEDM	\$269.49
1-1/4" x E x 1-1/4"	KV913BEFM	\$296.87
1" x F x 1-1/2"	KV913BFEM	\$323.38
1-1/2" x F x 1-1/2"	KV913BFGM	\$360.98
1-1/4" x G x 2"	KV913BGFM	\$458.57
2" x G x 2"	KV913BGHM	\$541.58
1-1/2" x H x 2-1/2"	KV913BHGM	\$638.31
2" x J x 3"	KV913BJHM	\$873.05

Packed Lever

Series 910-911-916-917

Orifice	Price
D	\$144.46
E	\$144.46
F	\$150.03
G	\$200.03
H	\$250.03
J	\$287.35

Series 912-913-918-919

Orifice	Price
D	\$56.65
E	\$59.08
F	\$63.13
G	\$67.97
H	\$74.44
J	\$79.31

Model 911

Size	VNS#	Price
1/2" x D x 1"	KV911BDCM	\$857.60
3/4" x E x 1-1/4"	KV911BEDM	\$919.71
1" x F x 1-1/2"	KV911BFEM	\$965.01
1-1/4" x G x 2"	KV911BGFM	\$1,396.97
1-1/2" x H x 2-1/2"	KV911BHGM	\$1,761.70
2" x J x 3"	KV911BJHM	\$2,379.73

Hi-Temp Spring

Series 910-911-927

Orifice	Price
D	\$126.63
E	\$140.05
F	\$153.47
G	\$171.91
H	\$192.89
J	\$211.33

Soft Seat Pricing

Series 910-911-912-913-916-917-918-919

Orifice	Price
D	\$22.05
E	\$24.57
F	\$28.80
G	\$56.81
H	\$65.96
J	\$75.36

Model 927

Size	VNS#	Price
1/2" x D x 1"	KV927BDCM	\$741.80
3/4" x E x 1-1/4"	KV927BEDM	\$782.07
1" x F x 1-1/2"	KV927BFEM	\$819.84
1-1/4" x G x 2"	KV927BGFM	\$1,279.69
1-1/2" x H x 2-1/2"	KV927BHGM	\$1,530.25
2" x J x 3"	KV927BJHM	\$2,004.71

The ASME Code requires that all steam, air and non-hazardous gases have a test lever. Plain levers will work, but the packed lever will keep all of the product (including liquids) enclosed, keeping you dry!!!

Liquid Service Valves



Adjustable Liquid Relief Valves Model 19 and 20

Model 19 is an all bronze/brass non-code liquid relief valve that has a handwheel for easy adjustment. This valve is also available with 150lb. or 300lb. inlet flanges and 150lb. outlet flanges. Maximum pressure rating is 300psi.

Model 20 is an all bronze/brass non-code liquid relief valve. Model 20 is built from the body of a Model 19, but comes with a cap or a packed test lever. This valve is available with 150lb. or 300lb. inlet flanges and 150lb. outlet flanges. Maximum pressure rating is 300psi.

Model 19

Size	VNS#	Price
1/2" x C x 3/4"	KV0019-C	\$108.05
3/4" x D x 3/4"	KV0019-D	\$108.05
1" x E x 1"	KV0019-E	\$125.91
1-1/4" x F x 1-1/4"	KV0019-F	\$162.59
1-1/2" x G x 1-1/2"	KV0019-G	\$194.31
2" x H x 2"	KV0019-H	\$292.44
2-1/2" x J x 2-1/2"	KV0019-J	\$463.98
3" x K x 3"	KV0019-K	\$791.11

Model 20 AND 20P

Size	VNS#	Price	VNS#	Price
1/2" x C x 3/4"	KV0020-C	\$108.05	KV020P-C	\$168.24
3/4" x D x 3/4"	KV0020-D	\$108.05	KV020P-D	\$168.24
1" x E x 1"	KV0020-E	\$125.91	KV020P-E	\$186.46
1-1/4" x F x 1-1/4"	KV0020-F	\$162.59	KV020P-F	\$232.07
1-1/2" x G x 1-1/2"	KV0020-G	\$194.31	KV020P-G	\$270.23
2" x H x 2"	KV0020-H	\$292.44	KV020P-H	\$373.95
2-1/2" x J x 2-1/2"	KV0020-J	\$463.98	KV020P-J	\$561.24
3" x K x 3"	KV0020-K	\$791.11	KV020P-K	\$897.62

See Kunkle Ordering Guide pg. 11



Model 264 and 266

Model 264 is a cast steel body with stainless steel trim.

Model 266 is an all stainless steel valve.

Both valves are available with packed test levers.

Pressure - 4 to 3300psig

Non-code Liquid or ASME Sect VIII Steam, Air or Gas Service.

Size	VNS#	Price	VNS#	Price
1/2" x C x 1 or 3/4"	KV0264-C	\$428.54	KV0266-C	\$637.56
3/4" x D x 1 or 3/4"	KV0264-D	\$428.54	KV0266-D	\$637.56
1" x E x 1"	KV0264-E	\$428.54	KV0266-E	\$637.56

Model 71S, 171 and 171S

Model 71S, Pressure - 1 to 250psig

Model 171 and 171S, Pressure - 1 to 400psig

The 71S, 171 and 171S are non-code liquid relief valves. The 71S has a cast iron body with stainless steel trim. The 171 is a cast steel valve with stainless steel trim. The 171S is an all stainless steel valve suitable for sanitary applications.



Size	VNS#	Price	VNS#	Price	VNS#	Price
1/2" x C x 3/4"	KV071S-C	\$277.34	KV0171-C	\$319.68	KV0171S-C	\$602.03
3/4" x D x 3/4"	KV071S-D	\$277.34	KV0171-D	\$319.68	KV0171S-D	\$716.00
1" x E x 1"	KV071S-E	\$327.77	KV0171-E	\$445.72	KV0171S-E	\$832.96
1-1/4" x F x 1-1/4"	KV071S-F	\$394.32	KV0171-F	\$539.50	KV0171S-F	\$1,005.39
1-1/2" x G x 1-1/2"	KV071S-G	\$492.12	KV0171-G	\$671.61	KV0171S-G	\$1,256.49
2" x H x 2"	KV071S-H	\$819.87	KV0171-H	\$1,073.97	KV0171S-H	\$2,009.77

Sentinel Valves, Small Air Compressor Valves and Section IV Liquid Valves



Model 537

Pressure - 15 to 160psig
 This ASME Section IV safety valve for Low Pressure, Hot Water Boilers. These safety relief valves serve the dual purpose of relieving (1) overpressure created by thermal expansion under normal "on and off" firing conditions, and (2) overpressure in the form of water or steam created in over-firing due to electrical or other control failures.

Size	VNS#	Price
3/4" x D x 1"	KV0019-C	\$111.12
1" x E x 1-1/4"	KV0019-D	\$115.14
1-1/2" x G x 2"	KV0019-E	\$206.58
2" x H x 2-1/2"	KV0019-F	\$309.39

Model 548

This is a high capacity, small safety valve for pressures up to 400psig.

Size	VNS#	Price
1/4" x A	KV0548-A	\$27.99
1/2" x C	KV0548-C	\$37.31



Model 40R and 40RL

Pressure - 1 to



Size	VNS#	Price
1/2" x C	KV040R-C	\$260.08
3/4" x D	KV040R-D	\$260.08
1/2" x C	KV40RL-C	\$349.53
3/4" x D	KV40RL-D	\$349.53

400psig non-code steam valve used as a tinsel (warning device). If your boiler running too close to pressure, this valve could be your defense. It allows you to

This sentinel

hear when

Kunkle Ordering Guide

VNS #: _____ Type of Service:
 ASME Sect. I
 ASME Sect. IV
 ASME Sect. VIII Air
 ASME Sect. VIII Liquid
 ASME Sect. VIII Steam
 Non-Code Air
 Non-Code Liquid
 Non-Code Steam
 Vacuum

Size: _____

Soft Seat: (900 Series Only)
 Vinton
 Buna-N
 Silicone
 Ethylene Propylene
 Neoprene

O-Ring: (6000 Series Only)
 EPR
 Viton

Type of Cap
 Plain Cap
 Open Lever
 Packed Lever

Vibration Dampening Spring (Open Lever Only)

Set Pressure: _____

Certificates of Conformance (\$20 per valve)

Drip Pan Elbow

Teflon Tape

Flange Packs

Model 337

Pressure - 1 to 60psig

This ASME Section VIII certified safety valve protects your low to medium pressure high volume blowers, compressors and pneumatic conveying systems with this valve.

Size	VNS#	Price
2" x H x 2"	KV0337-H	\$177.75
2-1/2" x J x 2-1/2"	KV0337-J	\$299.58
3" x K x 3"	KV0337-K	\$388.48

Model 215V

Vacuum



Size	VNS#	Price
2" x H x 2"	KV215V-H	\$187.88
2-1/2" x J x 2-1/2"	KV215V-J	\$317.57
3" x K x 3"	KV215V-K	\$410.44

Limits - 2 to 29 inHg
 This is a vacuum breaking valve perfect for vacuum blowers and pumps.

Consolidated

Sentinel Valves, Small Air Compressor Valves and Section IV Liquid Valves

Call With Existing Serial Number for Exact Pricing

Model 1511

Consolidated type 1511 safety valves are designed for low pressure, steam heating boilers and steam generators as well as air service applications.



Inlet Sizes: 1-1/2" through 6" in either flanged or threaded design
Inlet Ratings: ANSI Class 250
Outlet Sizes: 2-1/2" through 4" threaded, 6" and 8" either flanged or threaded
Outlet Ratings: ANSI Class 125
Orifice Sizes: Eight Sizes - H through Q
Temp. Range: -20°F to 420°F
Materials: Cast iron body with brass trim is standard. Stainless steel trim is optional.
Certification: ASME Section 1 and VIII

Model 1541 / 1543

Consolidated type 1511 and 1543 safety valves are designed for steam and other compressible fluids.



Inlet Sizes: 1/2" through 2-1/2" threaded
Outlet Sizes: 3/4" through 2-1/2" threaded
Orifice Sizes: Six Sizes - D through J
Set Pressure Range 5psig to 350psig
Temp. Range: -20°F to 420°F
Materials: Cast iron bonnet with brass base and trim is standard. Available with bronze bonnet. Stainless steel base and disc are also optional.
Certification: ASME Section 1 and VIII

Model 1700

Consolidated Maxiflow high pressure safety valves are premium products that are installed on a majority of power generating stations worldwide to protect boilers from overpressure conditions.



Inlet Sizes: 1-1/2" through 6" in either flanged or weld neck design
Inlet Ratings: ANSI Class 600 through 4750
Outlet Sizes: 3" through 10" flanged
Outlet Ratings: ANSI Class 150 and 300
Orifice Sizes: Eleven Sizes - 1 through RR
Temp. Range: To 1200°F
Materials: Alloy and carbon steel cast body with stainless steel trim is standard. Special alloys are available for specific applications.
Certification: ASME Section 1 and VIII

Model 1811

Consolidated type 1811 safety valve is a cost effective, high capacity, flanged safety valve designed for steam service.



Inlet Sizes: 1-1/4" through 6" flanged
Inlet Ratings: ANSI Class 300 and 600
Outlet Sizes: 1-1/2" through 8" flanged
Outlet Ratings: ANSI Class 150
Orifice Sizes: Ten Sizes - F through Q
Temp. Range: To 1000°F
Materials: Alloy and carbon steel cast body with stainless steel trim is standard.
Certification: ASME Section 1 and VIII

Model 2478

The Consolidated type 2478 pressure relief valve is a totally enclosed design for non-corrosive, thermal relief, liquid service.



Inlet Sizes: 1/2" through 2-1/2" threaded
Outlet Sizes: 3/4" through 2-1/2" threaded
Orifice Sizes: Six Sizes - D through J
Set Pressure Range 5psig to 350psig
Temp. Range: -75°F to 406°F
Materials: Cast bronze bonnet, brass base and trim and PTFE soft seats are standard.
Certification: ASME Section 1 and VIII

Model 2700

Consolidated type 2700 safety valve is designed to meet the fast growing co-generation and waste-to-energy markets.



Inlet Sizes: 1-1/2" through 6" in either flanged or weld neck design
Inlet Ratings: ANSI Class 600, 900 and 1500
Outlet Sizes: 3" through 8" flanged
Outlet Ratings: ANSI Class 150 and 300
Orifice Sizes: Ten Sizes - 1 through Q
Temp. Range: To 1050°F
Materials: Alloy and carbon steel cast body with stainless steel trim is standard. Special alloys are available for specific applications.
Certification: ASME Section 1 and VIII



Safety Relief Valves, Boiler Safety Valves, and Vacuum Relief Valves

Priced on Application

10-322 & 10-512 Series

ASME Section VIII Steam Safety Relief Valves

National Board capacity-certified safety relief valves; brass body with optional satin or polished chrome finish. Protects against excess pressure from thermal expansion and steam caused by failure of BTU input controls.

- Stainless steel springs
- Discharge capacities to 725 lbs/hr
- Pressure settings 15 to 60 psig



14-200 Series

High Capacity Low Pressure Steam Boiler Safety Valves

National Board capacity-certified in accordance with ASME Section IV at 15 psig. For commercial and industrial boilers.

- Nozzle-type chrome-plated brass disc
- PTFE coated O-ring for positive seal
- One piece body, all bronze construction



18 Series

Water Heater T&P Relief Valves

Automatic temperature and pressure relief valves feature unique non-metallic coating which protects the element against galvanic and electromechanical corrosion by isolating it from the heated water. This coating is electrostatically applied for uniform coverage, then thermobonded, resulting in optimum adhesion for extended service life. CSA design certified at all settings and ASME Section IV rated at 125 psig and 150 psig setting for 3/4 NPT only.

- Meets HUD/FHA requirements
- Cast bronze body, stainless steel spring
- Rated 210 F maximum



37 Series

Vacuum Relief Valves for Water Heater Protection

Automatically vents a system if a vacuum should occur. Prevents siphoning of the water from the system and collapse of a tank. Design certified by CSA in accordance with ANSI. Also suitable for low pressure steam service.

- Maximum temperature: 250 °F
- Rated for water pressures to 200 psig
- Model 37-100 bronze body (silicone rubber seat) or Model 37-200 brass body (EPDM rubber seat)
- Auto-vacuum relief at less than 1/2" vacuum





McDonnell & Miller

BOILER CONTROL REPLACEMENT PARTS



SERIES 47 - Mechanical Water Feeders

No. 47 VNS# MM017
 No. 47-2 w/ Cut-off Switch VNS# MM018

Item #	Part #	Model#	Description	VNS #
1	310453	CTRD-101	Cartridge & Strainer	MM404
2	341600	SA47-101-102	Valve, Cartridge & Strainer Kit	MM498
3	324435	37-101	Tetraseal O-Ring	MMZ324435
4	347100	SA101-38	Strainer	MM531
5	341500	SA47-4	Bellows Bracket Assembly	MM497
6	312800	37-27	Gasket	MM416
7	302900	CO-106	Cam Assembly	MM466
8	332800	MA-259	Quick Hook-up Fittings (Includes 9,10,11)	MM482
9	349400	SA159-17	Black "Y" Assembly	MM540
10	351800	SA259-24	Upper Quick Hook-up Fittings	MM481
11	349500	SA159-24	Lower Quick Hook-up Fittings	MM544
12	340600	SA37-30	Float Includes #13 Gasket	MM493
13	312700	37-26	Gasket	MM415
14	310447	14-B	Blow Down Valve	MM405
15	313200	37-39	Blow Down Gasket	MM419
9-2	110000	—	Switch for 47-2	MM301
9-3	110100	—	Switch for 47-2 with Manual Reset	MM302

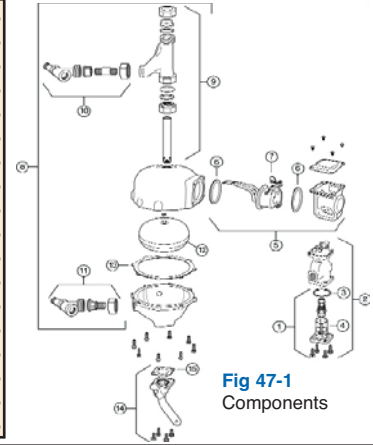


Fig 47-1
Components



SERIES 21 - Make-Up Water Feeders

No. 21 VNS# MM015
 No. 221 VNS# MM026

Item #	Part #	Model #	Description	VNS#
1	311200	21-30	Float	MM410
2	335400	847-26	Gasket	MM460
3	311100	21-27	Gasket	MM409
4	310800	21-12	Gasket	MM408
5	339500	SA21-6	Valve Assembly	MM487
6	312900	37-28	Gasket	MM417
7	342300	SA51-9R	Strainer Assembly	MM504
8	3397010	SA21-38R	Strainer Basket	MM488
9	324435	37-101	Tetraseal O-ring	MMZ324435
2A	304100	F-26	Head Gasket #221	MM467

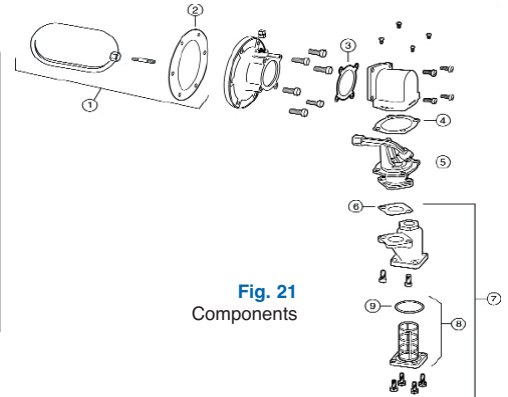


Fig. 21
Components



SERIES 51

Water Feeders/Low Water Cut Offs

No. 51 VNS# MM020
 No. 51-2 VNS# MM021

Item #	Part #	Model #	Description	VNS#
1	110000	2	Low Water Cut-off Switch	MM301
2	110100	2-M	No. 2 with Manual reset	MM302
3	310480	FLT-51	Float	MM505
4	304100	F-26	Gasket	MM467
5	312800	37-27	Gasket	MM416
6	302900	CO-106	Cam Assembly	MM466
7	342000	SA51-4	Bellows bracket Assembly	MM502
8	342500	SA51-101-102	Valve & strainer kit	MM506
9	310452	CTRD-51	Cartridge & Strainer Kit	MM404
10	324435	37-101	Tetraseal O-ring	MMZ324435
11	347100	SA101-38	Strainer Basket (includes item 10)	MM531

Replacement Head Mechanisms

For Series	Repl. Head Model #	Part#	Description	VNS#
51-2	135100	2	Low Water Cut-off Switch	MM301
	or	135100	2-M	No. 2 with Manual reset

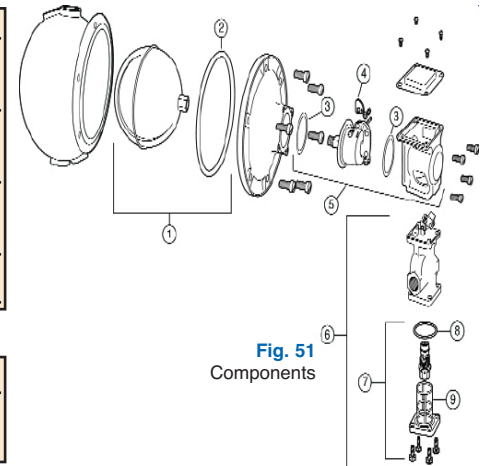


Fig. 51
Components



SERIES 25-A - Make-Up Water Feeders

No. 25-A (complete) VNS# MM015
 No. 25-AHD (Head Assembly) VNS# MM309

Item #	Part #	Model #	Description	VNS#
1	304100	F-26	Gasket	MM467
2	334100	421-30	Float	MM454
3	340400	SA27T-75	Diaphragm Seal Assembly	MM491
4	312100	27T-13	Gasket	MMZ312100
5	339800	SA25-5	Arm Assembly	MMZSA255
6	311100	21-27	Gasket	MM409
7	312900	37-28	Gasket	MM417
8	342300	SA51-9R	Strainer Assembly	MM504
9	324435	37-101	Tetraseal O-ring	MMZ324435
10	339700	SA21-38R	Strainer Basket	MM488
11	339900	SA25A-6	Valve Assembly	MM489
12	340000	SA25A-15	Stem & disc Assembly	MMZSA25A15

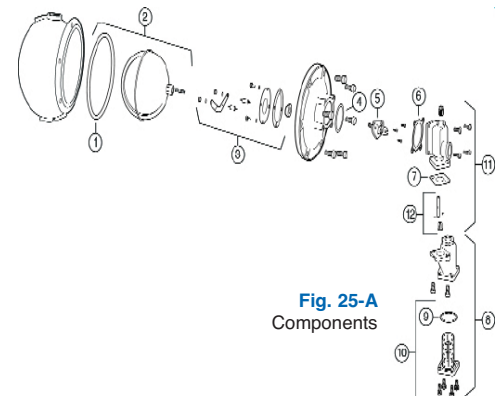


Fig. 25-A
Components



McDonnell & Miller

BOILER CONTROL REPLACEMENT PARTS

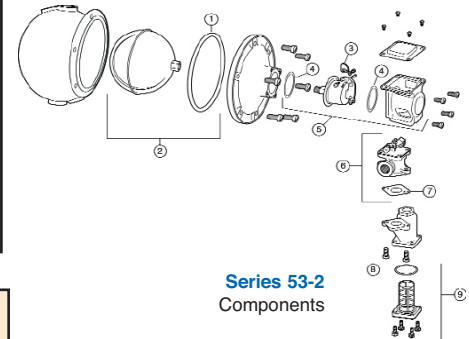


SERIES 53-2
Water Feeder/Low Water Cut-offs
 No. 53-2 VNS# MM032
 No. 53 VNS# MM031

Item #	Part #	Model #	Description	VNS#
1	110000	2	Low Water Cut-off Switch	MM301
2	110100	2-M	No. 2 with Manual reset	MM302
3	303100	F-26	Gasket	MM467
4	310482	FLT-53	Float	MM350
5	302900	CO-106	Cam Assembly	MM466
6	312800	37-27	Gasket	MM416
7	342700	SA53-4	Bellows bracket Assembly	MM508
8	342800	SA53-6	Valve Assembly	MM509
9	312900	37-28	Gasket	MM417
10	324435	37-101	Tetreseal O-ring	MMZ324435
11	340700	SA37-38	Strainer Basket	MM494

Replacement Head Mechanisms

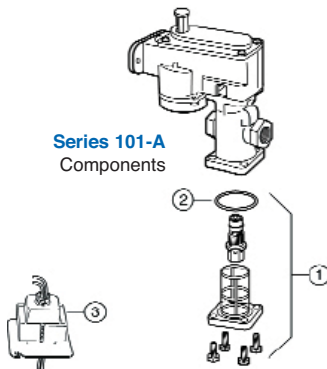
For	Repl. Head	Part#	Description	VNS#
Series	Model #			
53	53-2-HD	137300	Head Mechanisms w/ No. 2 switch	MM317
	or			
	53-2M-HD	137250	53-2-HD with Manual reset	MM318



Series 53-2
 Components



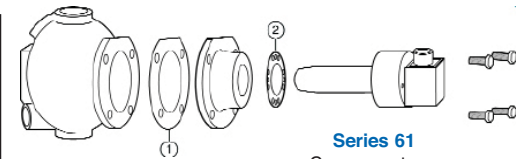
SERIES 101-A - Electric Water Feeders
 No. 101-A VNS# MM024
 No. 101-A-24V VNS# MM025



Series 101-A
 Components

Item #	Part #	Model #	Description	VNS#
1	302600	CO-12	Head Gasket	MM465
2	318800	67-12	Gasket	MM437

For	Repl. Head	Part#	Description	VNS#
Series	Model #			
61	61-HD	140300	Head Mechanism	MM320
	or			
	6667	153825	Head Mechanism	MM334



Series 61
 Components

SERIES 61 - Low Water Cut-offs
 No. 61 VNS# MM211

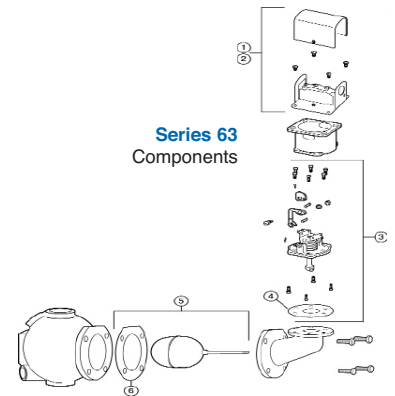
Item #	Part #	Model #	Description	VNS#
1	310453	CTRD-101	Cartridge & Strainer Kit	MM406
2	324435	37-101	Tetreseal O-ring	MMZ324435
3	324100	101-24V-48	Transformer (24V)	MM442



SERIES 63 - Low Water Cut-offs
 No. 63 VNS# MM087
 No. 63M VNS# MM088

Item #	Part #	Model #	Description	VNS#
1	110000	2	Low Water Cut-off Switch	MM301
2	110100	2-M	No. 2 with Manual reset	MM302
3	343200	SA63-5	Bellows Assembly	MM512
4	302500	CO-11	Gasket	MM464
5	343400	SA63-30	Float	MM513
6	302600	CO-12	Head Gasket	MM465

For	Repl. Head	Part#	Description	VNS#
Series	Model #			
63	63 HD	142600	Head Mechanisms w/ No. 2 switch	MM321
	63-B			
	63-BM			
	63-M-HD	143200	63-HD with Manual reset	MM322
	63-M			



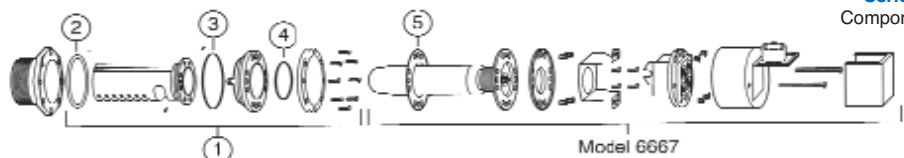
Series 63
 Components



SERIES 69 - Low Water Cut-offs
 No. 69 VNS# MM214
 No. 169 VNS# MM217

Item #	Part #	Model #	Description	VNS#
1	344300	SA69-104	Shield Assembly	MM519
2	320500	69-112	Gasket	MM439
3	318826	69-113	O-ring	MMZ318826
4	318827	69-114	O-ring	MMZ318827
5	318800	67-12	Gasket	MMZ318800

For	Repl. Head	Part#	Description	VNS#
Series	Model #			
69	6667	153825	Head Mechanisms	MM334
	69-MV-P	6667-MV	6667 w/Millivolt service	MM335



Series 69
 Components

Model 6667

McDonnell No. 2



No. 2 **No. 2-M**
MM301 MM302

Low Water Cut-off and Alarm Switch

Used to add low water cut-off to McDonnell feeders; No. 47, 51 and 247. Can be purchased mounted on the feeder; No. 47-2, 51-2, 247-2, or purchased separately and added later. It has a line voltage cut-off and alarm. Underwriters listed. For manual reset, order No. 2-M. Shipping weight 2 lbs.

McDonnell Air Flow Switches



Offers a dependable way to make or break an electrical circuit when flow in an air duct starts or stops. Senses air flow, or flow failure by responding only to velocity of air movement. Broad range of applications includes air conditioning systems, exhaust or make-up air systems, equipment or processes requiring air cooling or heating. Underwriters listed.

Switch sensitivity easily adjusted. Fits ducts 6" and larger. For temperature to 300°F. (No. AF3, 275°F.) Shipping weight 2 1/2 lbs.

No.AF1 - Designed for medium and higher air velocity system applications.

No.AF2 and AF3 - Designed for low air velocity applications.

McD#	VNS#
AF1	MM001
AF2	MM004
AF3	MM005

McDonnell Liquid Flow Switches

No. FS4-3

MM062



McDonnell Flow Switches offer a dependable way to make or break electrical circuit when flow in a pipeline starts or stops. Some of their basic uses: to actuate signal devices; control motors; start or stop burners; sound alarm; control metering devices. All models Underwriters Listed; equipped with SPDT switches; easily adjustable for sensitivity to flow.

Compact, moderately priced flow switch for service on water lines principally. Wetted parts brass and monel. Segmented paddle for 1" to 3" pipe, extended paddle included for larger pipe. Has 1" NPT connection, installs in tee or welding neck in-line. For pressures to 150 psi, temperatures to 300°F. Shipping weight, 3lbs.

No. FS8W

MM080



Provides vapor-proof construction in economically priced, compact size flow switch for out-of-doors and high humidity locations. Wetted parts of brass and Monel. Maximum pressure 150 p.s.i.; maximum temperature 225°F.

No. FS1 and FS6 Series



fs1



fs6

Actuated by low flow rates, yet allows large flow-through capacity. Particularly suited for water purification and water supply booster systems, cooling systems for bearings, electronic tubes, and compressors. Brass wetted parts. NPT threaded inlet and outlet, installs right in line. For pressures to 100 p.s.i.; temperatures to 225°F.

Mc Donnell Product #	Tapped for Pipe Size	Shipping Weight	VNS#
No. FS1	1/2"	3-1/4 lbs.	MM061
No. FS6-3/4 in.	3/4"	5 lbs.	MM076
No. FS-1 in.	1"	5 lbs.	MM077

No. FS4-3



For heavier duty service or for use with process liquids. Available in standard, vapor-proof construction. Wetted parts of brass or stainless steel. Maximum pressure 300 p.s.i. with brass wetted parts, 1000p.s.i. with stainless steel. Maximum temperature all models 300°F.

McD #	VNS#
No. FS7-4 Brass	MM078
No. FS7-4-S Stainless Steel	MM081

Model TC-4 Test-N-Check Valves

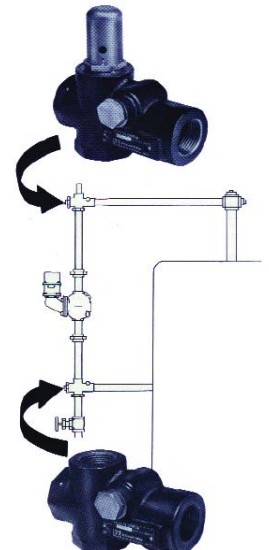
Meets CSD 1 Code

MM200



TC4 Test-N-Check valves simplify the testing of low water cut-off operation on hot water boilers by eliminating the need to drain the system. They also prevent false signals due to water flow through the equalizing piping.

Water and Air Flow Switches indicate the presence or absence of liquid or gas flow through piping or ductwork. They can sound signals, start or stop pumps, light warning lights, or otherwise initiate action in heating and cooling systems or process applications. A wide variety of models including fire sprinkler system applications are available.



VIERK NATIONAL SUPPLY

- We inventory hundreds of McDonnell-Miller controls and B & G Pumps.

- This 2003 catalog does not allow us the space to show all of these items.

- Our future catalog is expanding... Watch for our 2004 catalog!

- Please call for all items not shown.

Vierk National Supply is the "turnkey" solution for all of your boiler and hydronic and steam applications.



McDonnell & Miller

BOILER CONTROL REPLACEMENT PARTS

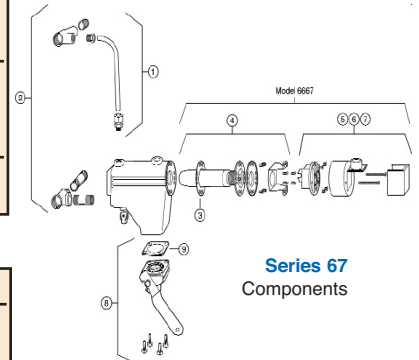


SERIES 67
Low Water Cut-offs/Pump Controllers
 No. 67G VNS# MM213
 No. 67 VNS# MM212
 No. 67M VNS# MM212M

Item #	Part #	Model #	Description	VNS#
1	344100	SA66-35	Upper Tube Assembly	MM518
2	334600	MA559	Quick Hook-up fittings	MMZMA559
3	318800	67-12	Gasket	MM437
4	344200	SA67-2	Float and Bellows Assembly	MM520
5	309100	11	Switch	MM402
6	309151	11-M	Switch w/ manual Reset	MM403
7	309200	11-MV	No. 11 for Millivolt service	MM403MV
8	310447	14-B	Blow Down Valve	MM405
9	313200	37-39	Blow Down Valve gasket	MM419

Replacement Head Mechanisms

For Series	Repl. Head Model #	Part#	Description	VNS#
67	6667	153825	Head Mechanisms w/ No. 2 switch	MM334
67-LQHU	6667	153825	Head Mechanisms w/ No. 2 switch	MM334
67-G	667MV	153850	6667 for Millivolt Service	MM335



Series 67
 Components

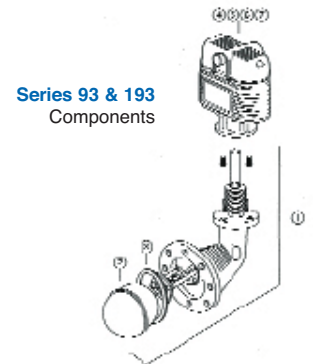


SERIES 93 & 193
Low Water Cut-offs/Pump Controllers
 No. 93 VNS# MM254
 No. 193 VNS# MM265
 No. 93-7B VNS# MMZ937B

Item #	Part #	Model #	Description	VNS#
1	162402	93-HDLS	Head w/o switch	MM325LS
2	345700	SA91-60	Float(includes item 3)	MM521
3	325400	150-14	Gasket	MM444
4	110300	5	Electric Switch	MM251
5	110400	5-M	No. 5 w/ manual Reset	MM252
6	110800	7B	Electric Switch/ Proportion Control	MMZ110800
7	110900	7B-M	No. 7B w/ manual Reset	MM253

Replacement Head Mechanisms

For Series	Repl. Head Model #	Part#	Description	VNS#
—	162400	93-HD	Head Mechanism	MM325



Series 93 & 193
 Components

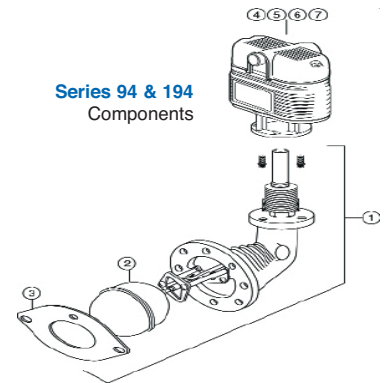


SERIES 94 & 194
Low Water Cut-offs/Pump Controllers
 No. 94 VNS# MM256
 No. 94M VNS# MM257
 No. 194 VNS# MM267

Item #	Part #	Model #	Description	VNS#
1	165302	93-HDLS	Head w/o switch	MM345700
2	345700	SA91-60	Float(includes item 3)	MM521
3	323300	150-14	Gasket	MM441
4	110300	5	Electric Switch	MM251
5	110400	5-M	No. 5 w/ manual Reset	MM252
6	110800	7B	Electric Switch/ Proportion Control	MM041
7	110900	7B-M	No. 7B w/ manual Reset	MM253

Replacement Head Mechanisms

For Series	Repl. Head Model #	Part#	Description	VNS#
—	165300	94-HD	94 Head Mechanism	MM328
—	166000	94-M-HD	94-M Head Assembly	MM329
—	166500	94-7B-HD	94-7B Head Assembly	MM330



Series 94 & 194
 Components

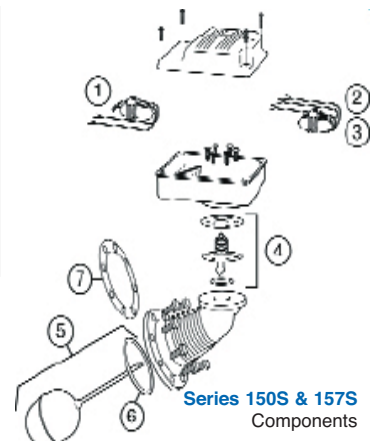


SERIES 150S & 157S
Low Water Cut-Offs
 No. 150S VNS# MM258
 No. 157S VNS# MM261
 No. 150S-M VNS# MM259
 No. 157S-M VNS# MM262

Item #	Part #	Model #	Description	VNS#
1	348300	SA150-125	Mercury switch, 2 wire	MM536
2	348100	SA150-124	Mercury switch, 3 wire	MM535
3	310463	SWA150S-M	Mercury Free Snap Switch	MMZ310463
4	347900	SA150-106R	Bellows Assembly	MM534
5	347600	SA150-11	Float & Rod	MM533
6	325400	150-14	Head Gasket (for full head flange, no holes)	MM444
7	325500	150-14H	Head Gasket (for raised face head flange, 8 holes)	MM445

Replacement Head Mechanisms

For Series	Repl. Head Model #	Part#	Description	VNS#
150	150S	173003	Head Mechanism	MM331
150	150S-M	173203	Head Mechanism	MM332



Series 150S & 157S
 Components



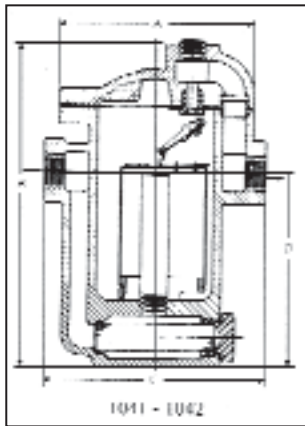
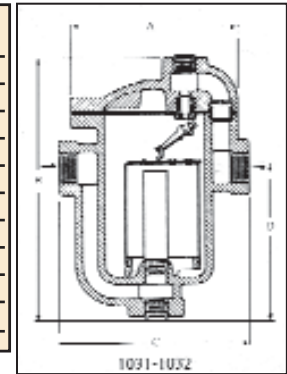
INVERTED BUCKET STEAM TRAPS



Capacity Table - condensate lbs/hr

Model	Pipe Conn	Trap Orifice	Pressure differential (psig)																								
			1/4	1/2	3/4	1	2	3	4	5	10	15	20	25	30	40	50	60	70	80	100	125	150	180	200	225	250
800/880	1031&1041-200	3/16"	139	200	240	270	340	390	425	450	560	640	690														
800/880	1031&1041-800	1/2"								300	350	400	440	460	500	550	580	635	660	690							
800/880	1031&1041-1250	7/16"								240	280	320	350	380	410	460	490	520	560	580	640	680					
800/880	1031&1041-1500	#38									250	280	300	320	350	380	400	420	450	470	500	550	570				
811/881	1032&1042-150	1/2"	191	300	395	450	590	680	750	830	950	1060															
811/881	1032&1042-300	3/4"								530	700	820	880	950	100												
811/881	1032&1042-700	5/8"								500	560	620	680	710	780	800	860	950									
811/881	1032&1042-1250	1"												530	560	620	670	720	780	800	860	950					
811/881	1032&1042-2000	1 1/8"													500	550	580	620	650	700	810	840	860				
811/881	1032&1042-2500	#38														500	530	550	580	630	660	690	710	730	760		

NOTE: A SAFETY FACTOR OF 2:1 OR 3:1 MAY BE REQUIRED FOR PEAK LOADS



INVERTED BUCKET STEAM TRAP SPECIFICATIONS

Model #	Operating Pressures		Dimensions & Weight				
	Maximum Operating Pressure	Maximum Allow Pressure	Size	Weight (lbs.)	A	B	C
800 = 1031	150 psig @366°F	250 psig @450°F	1/2" or 3/4"	5	3 3/4"	5 7/8"	5"
811 = 1032	250 psig @406°F	250 psig @450°F	1/2" or 3/4"	6	3 3/4"	6 7/8"	5"
880 = 1041	150 psig @366°F	250 psig @450°F	1/2" or 3/4"	5 1/2	3 3/4"	6 1/16"	5"
881 = 1042	250 psig @406°F	250 psig @450°F	1/2" or 3/4"	6	3 3/4"	7 1/16"	5"
*812 = 1033	250 psig @406°F	250 psig @450°F	1/2" or 3/4"	15	5 5/8"	9 1/16"	6 1/2"
*813 = 1034	250 psig @406°F	250 psig @450°F	3/4" or 1"	27	7"	11 3/4"	7 3/4"
*883 = 1044	250 psig @406°F	250 psig @450°F	3/4", 1", 1 1/4"	30	7"	12 3/8"	7 1/8"

* A Capacity Table for the lower 3 model numbers above may be faxed to you upon request.

REPLACEMENT PARTS

How to Order Replacement Parts. For operating mechanisms, specify trap number and maximum operating pressure or orifice size. For gaskets, specify trap number. For body and cap, specify trap numbers and size of pipe connections.

	1031-1041	1032-1042	1033	1034-1044	1038	N/A	N/A
Mechanism or PCA-ASM	800-880	211-811-881	212-812-882	213-813-883	814	215	216
Standard Bucket							
Body Gaskets							

VNS will be stocking & selling a mix of both depending on best price and delivery. Upon ordering if you have preference please specify. VNS will still be selling Armstrong 200 Series please specify model #, pipe size, operating # and capacity.

Operating Pressures

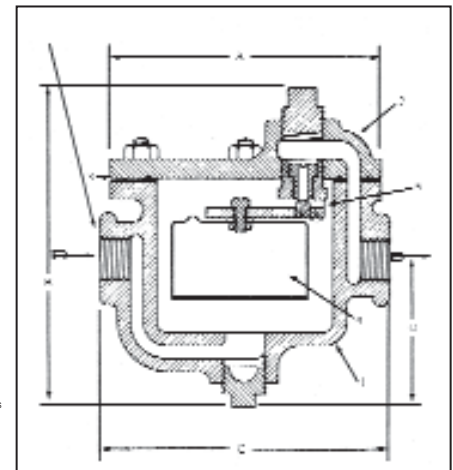
Model	Maximum Operating Pressure	Maximum Allow Pressure
814 = 1038	250 psig @406°F	250 psig @450°F

NOTE: CAN BE USED AT ANY PRESSURE BELOW ITS MAXIMUM OPERATING PRESSURE STAMPED ON THE COVER BUT WITH RESULTING LOSS IN CAPACITY.

Dimensions & Weight

Trap Size	Trap Weight	A	B	C
1 1/4" or 1 1/2"	40 lbs.	9"	11 3/4"	9 1/2"

SERIES 1038 SPECIFICATIONS



Capacity Table - condensate lbs/hr

Model	Trap Orifice	Pressure differential (psig)																								
		1/4	1/2	1	2	3	4	5	10	15	20	25	30	40	50	60	70	80	100	125	150	180	200	225	250	
30-lb	7/16"	1090	1585	2165	3100	3800	4500	5200	6700	7700	8600	9400	10,000													
75-lb	5/8"										6800	7400	8200	9000	9700	10,500										
125-lb	15/16"											6900	7500	8300	9000											
150-lb	7/8"													5300	5600	6100	6600									
200-lb	1 3/16"															5000	5400	5800	6000							
250-lb	1 1/2"																4700	4900	5200	5400						

NOTE: A SAFETY FACTOR OF 2:1 OR 3:1 MAY BE REQUIRED FOR PEAK LOADS



Steam traps shall be of the mechanical ball float type having cast iron bodies. NPT connections, and all stainless steel internals. Incorporated into the trap body shall be a stainless steel balanced pressure thermostatic air vent capable of withstanding 45°F(25°C) of superheat and resisting waterhammer without sustaining damage. Internals of the trap shall completely serviceable without disturbing the piping.



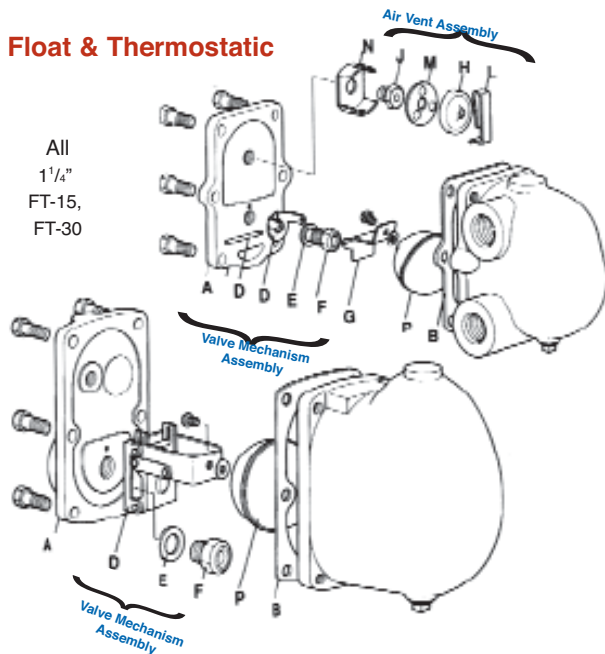
Float & Thermostatic Steam Trap Complete Replacement Kit #11

& Type	Trap Size	Catalog #
3/4" & 1" FT-15		SC505
1 1/4" FT-15		SC506
3/4" & 1" FT-30		SC508
1 1/4" FT-30		SC509
3/4" & 1" FT-75		SC510
3/4" & 1" FT-125		SC511

1 1/4" FT-15 Replacement module list \$160.00

Kit consists of:

Cover Gasket, Air Vent Assembly, Complete Valve Mechanism Assembly, Float (Stainless Steel) with Screw & Washer



All
1 1/4"
FT-15,
FT-30

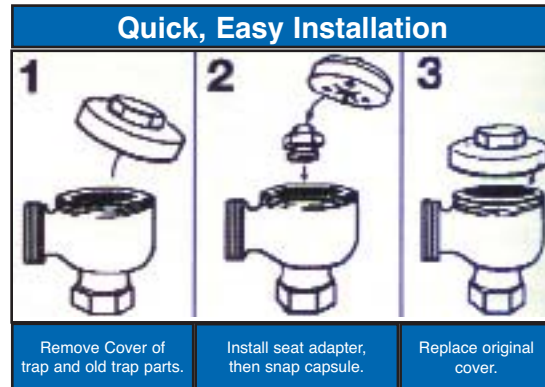
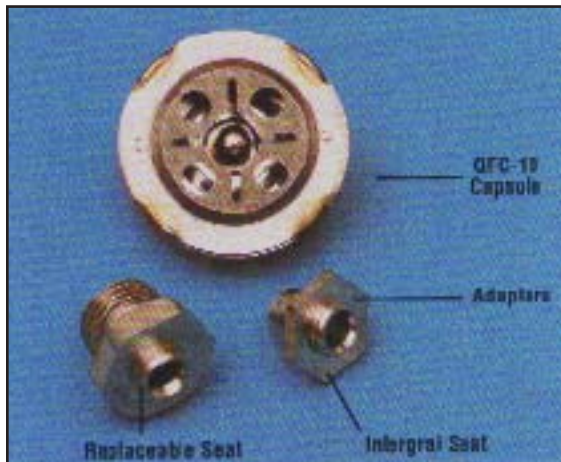
Size		FT-15	FT-30	FT-75	FT-125	FT-150	FT-200
3/4"	Catalog #	SC201	SC206	SC211	SC216	SC221	SC225
1"	Catalog #	SC202	SC207	SC212	SC217	SC222	SC226
1 1/4"	Catalog #	SC203	SC208	SC213	SC218	SC223	SC227
1 1/2"	Catalog #	SC204	SC209	SC214	SC219	SC224	SC228
2"	Catalog #	SC205	SC210	SC215	SC220	—	—

Types FT or F*-15, 20, 30, 75 & 125; FTB-20

	Size	Catalog #	Valve Mech. Kit	Float Kit	Air Vent Kit	Gasket Kit
			D,E,F,G	P	H,J,L,M,N,	(Set of 3) E,B
FT-15	3/4" & 1"	Catalog #	SC570	SC584	SC569	SC589
	1 1/4"	Catalog #	SC571	SC585	SC569	SC589
1 1/2"	Catalog #	SC572	SC586	SC569	SC590	
2"	Catalog #	SC573	SC587	SC569	SC591	
FT-30	3/4" & 1"	Catalog #	SC570	SC585	SC569	SC589
	1 1/4"	Catalog #	SC574	SC585	SC569	SC589
1 1/2"	Catalog #	SC575	SC586	SC569	SC590	
2"	Catalog #	SC576	SC587	SC569	SC591	
FT-75	3/4" & 1"	Catalog #	SC577	SC585	SC569	SC589
	1 1/4" & 1 1/2"	Catalog #	SC578	SC586	SC569	SC590
2"	Catalog #	SC579	SC587	SC569	SC591	
FT-125	3/4" & 1"	Catalog #	SC580	SC585	SC569	SC589
	1 1/4" & 1 1/2"	Catalog #	SC581	SC586	SC569	SC590
2"	Catalog #	SC582	SC587	SC569	SC591	
FT-150 150 psi	2"	Catalog #	SC583	SC588	SC569	SC592

*F Series Traps have no air vent

QUICK-FIX™ Radiator Steam Trap Replacement Kits



Once the Quick-Fix kits are installed, any subsequent trap repairs require only replacement of the capsule, which is the same for all trap kits.

QUICK-FIX Repair Kits for Steam Radiator Traps

Traps with Replaceable Seats					
Order Number	Model No.	Manufacturer	1/2" Traps	3/4" Traps	
WR220	QF-1	Warren Webster	02H, 02V, 502, 502V-1 702, 702V-1, 712, 902V	503, 703, 713	
WR221	QF-2	Warren Webster	512, 512H-1, 512-G-1 522, 522H, 522HB 712HB, 722HB	513, 533 523A, 523H-1**, 5236-1** 713HB, 733, 733HB 723A	
WR222	QF-3	Warren Webster	902H		
WR223	QF-4	Warren Webster		913A, 913H	
WR224	QF-5	Sarco	E, H, S65, TB25, TS25 T65	E, H, S65 TB25, TS25 T65	
		Erwel	R30		
		Illinois	1G	3GH	
		Trane	B1*		
		Marsh	1		
		Monash-Yonker	30		
WR225	QF-6	Hoffman	17C	8C	
WR226	QF-14	Marsh		2-4, 2-7	
WR227	QF-15	Sterling	7-50A		
WR228	QF-16	Trane		B3	
		Dunham-Bush		TH2A	
Traps with Integral Seats					
WR229	QF-7	Dunham-Bush	1B, 1C, 1E, V1B		
		Trane	B2		
		Sarco		T25	
WR230	QF-8	Sarco	T25		
		Hoffman	8		
WR231	QF-9	Illinois	1T, 2T		
WR232	QF-10	Barnes & Jones	122A, 122S, 3045		
WR233	QF-11	Barnes & Jones		134A, 134S	
WR234	QF-12	Trane	B1*		
WR235	QF-13	Trane		B3	
Replacement Air Vents for F&T Traps (15 and 30psi)					
WR236	QF-25	Sarco		Series FT 3/4" - 2"	
WR237	QF-26	Trane		686/55AL 3/4" - 1"	
Replacement Thermal Capsule Only					
WR238	QFC-10	ALL	ALL	ALL	

* Except Vertical Models.

**Old Style omits "-1" from symbol. for traps built since 1931 only.

Spence E-Valves



SPENCE E-MAIN VALVE

Spence E-Main valves are available in sizes 3/8" up to 12" and pressures up to 600 psi. The E-Main is a normally closed, single seated, pilot operated control valve. Designed to function quickly and shut tight on dead end service, this valve is easy to maintain with all parts accessible without removal from the line. The Spence E-Main valve is interchangeable with many different pilots to fit any application. For help in sizing a new regulator, please call.

	3/8	1/2	3/4	1	1-1/4	1-1/2	2	2-1/2	3	4	5	6
Screwed												
Flanged 125#												
Flanged 250#												

The Spence E-2 has the same operating characteristics as the E-Main valve except for the Spence E-2 valves are designed for maximum pressures of 15psi.

Cast Iron	3/4	1	1-1/4	1-1/2	2	2-1/2	3	4	5	6
Screwed										
Flanged 125#										

TYPE E-MAIN REPAIR KITS

Valve Size	Part Number
3/8"	SP-07-07746-00
1/2"	SP-07-07747-00
3/4"	SP-07-07748-00
1"	SP-07-07749-00
1-1/4"	SP-07-07750-00
1-1/2"	SP-07-07751-00
2"	SP-07-07752-00
2-1/2"	SP-08-08148-00
3"	SP-08-08567-00
4"	SP-08-08568-00
5"	SP-08-09738-00
6"	SP-08-09720-00

FAILURE TO OPEN OR SAGGING DELIVERY PRESSURE

1. Adjusting spring on pilot may have been tampered with.
2. Initial pressure may be down due to a partially closed supply valve, clogged strainer or other obstruction.
3. Orifice in restriction elbow may be plugged.
4. Bleedport fitting may have been omitted and an open coupling substituted.
5. Control pipe may be plugged.
6. Main diaphragm may be broken.

TYPE "E2" REPAIR KITS

Valve Size	Part Number
3/4"	SP-08-07940-00
1"	SP-08-07941-00
1-1/4"	SP-08-07942-00
1-1/2"	SP-08-07943-00
2"	SP-08-07944-01
2-1/2"	SP-08-07945-01
	SP-08-07946-01
4"	SP-08-09587-01
5"	SP-08-10980-00
6"	SP-08-10995-00

FAILURE TO CLOSE OR OVER-RIDING DELIVERY PRESSURE

1. Adjusting spring on pilot may have been tampered with.
2. Orifice in bleedport may be plugged.
3. By-pass valve may be leaking.
4. On pressure regulators, the main valve or the pilot may be held open by foreign matter in the seats.